

FY2021 Inter-University Exchange Project Waseda University

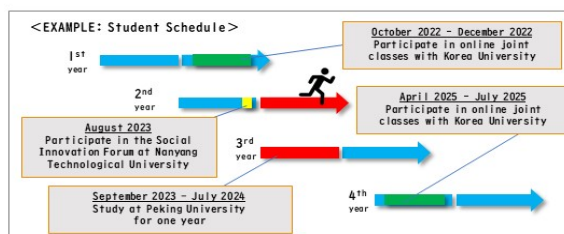
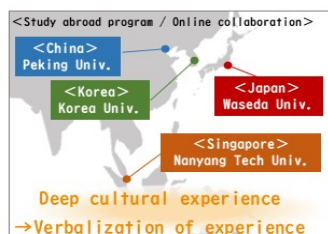
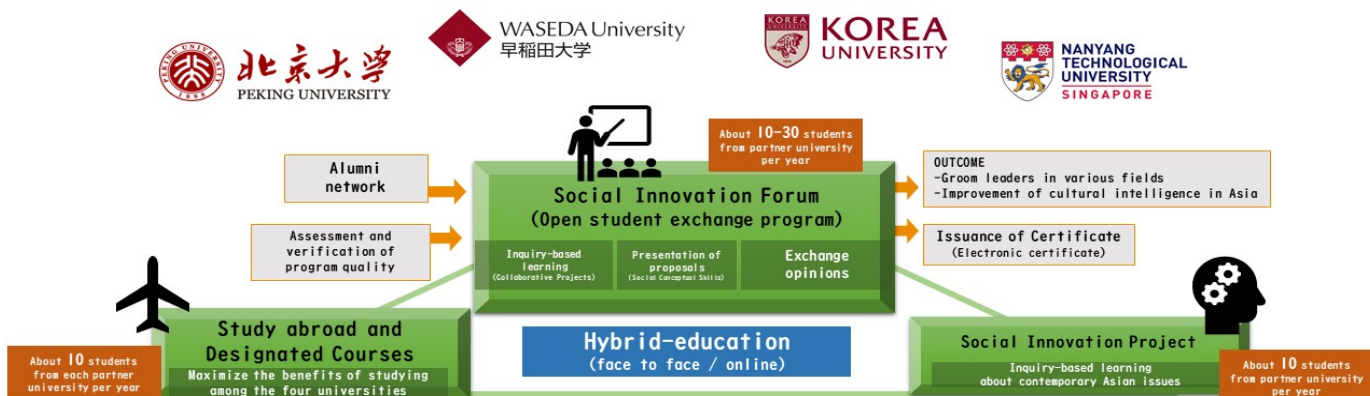
Support for promoting the establishment of Asian Higher Education Community

【Name of project】(Adopted year: FY2021, (Type A①))

Social Innovation Program for Promoting Dialogue of Civilizations and

Fostering Cultural Intelligence in Contemporary Asian Societies

【Summary of Inter-University Exchange Projects】



【Summary of Exchange program】

This program is designed to solve various social problems in contemporary Asia, and four universities - Waseda University (Japan), Peking University (China), Korea University (South Korea), and Nanyang Technological University (Singapore) - have joined hands in this project to provide students with the opportunities below.

- (1) Study abroad and take courses designated for this program.
- (2) "Social Innovation Project" in which students individually determine their own themes and conduct their own research.
- (3) "Social Innovation Forum" a student exchange event in which students from all 4 universities gather in-person to share their research findings and learn from each other.

【Global Human Resource on the project】

We will develop human resources who not only have a deep understanding and knowledge of the problems of contemporary Asian society and its historical background, but who are also capable of identifying social issues and implementing solutions. The ability required of social innovators that we need to develop in the post-COVID-19 era is "cultural intelligence." Cultural intelligence refers to the adaptive capability of individuals to work and communicate effectively with other people in culturally diverse contexts. This includes the ability to understand different cultures, the receptive ability to promote dialogue of civilizations, and the ability to propose and lead new mechanisms. Through this project between the four universities, we will develop social innovators with the cultural intelligence to shape a better future for Asian society.

【Features on the project】

This project will use the "Dialogue of Civilizations" perspective and methodology as mentioned in the project name, while providing students with a deep level of multicultural experience through study abroad and online exchange. We will develop a new learning curriculum with the goal of open innovation, working collaboratively to solve complex social problems. We are also looking into the publication of educational outcomes by participating students at the "Social Innovation Forum."

【Exchange Number】

		2021	2022	2023	2024	2025
Out bound	Students studying abroad	0	20	20	30	30
	Students taking online international education and exchange programs in their home countries	10	20	25	35	45
	Students fulfilling both of the above requirements	0	10	10	10	10
In bound	Students studying abroad	0	10	10	10	10
	Students taking online international education and exchange programs in their home countries	30	40	50	60	70
	Students fulfilling both of the above requirements	0	10	10	10	10

1. FY2021 Progress

【Waseda University】

【Name of project】(Adopted year: FY2021)

Social Innovation Program for Promoting Dialogue of Civilizations and Fostering Cultural Intelligence in Contemporary Asian Societies

■ Exchange Programs



〈 Online Symposium 〉



〈 PR materials 〉

-In FY2021, student exchanges with actual travel were not conducted due to the spread of COVID-19 and the entry restrictions imposed by each country.

-To commemorate the launch of the project, Waseda University hosted the "FY2021 Waseda Social Innovation Online Symposium" online with 61 participants (97 pre-registered), including students and faculty members from the three partner universities (Peking University, Korea University and Nanyang Technological University).

-This online symposium featured presentations by four faculty members from the Waseda University School of Social Sciences, the lead school for this project, as well as an interactive program and discussions with participants.

-8 outgoing students and 4 incoming students who understand the philosophy and mission of the program have been selected to participate in the program from the fall of FY2022.

〈 Website 〉



Student-Mobility

○ Outbound

-In FY2021, student exchanges with actual travel were not conducted due to the spread of COVID-19 and the entry restrictions imposed by each country. Nevertheless, in preparation for the start of student exchange with actual travel in FY2022, we have created a website and produced PR materials in order to promote the project and secure excellent students for the program.

- "FY2021 Waseda Social Innovation Online Symposium" hosted by Waseda University was held online and 41 Waseda students participated.

○ Inbound

-In FY2021, student exchanges with actual travel were not conducted due to the spread of COVID-19 and the entry restrictions imposed by each country. - "FY2021 Waseda Social Innovation Online Symposium" hosted by Waseda University was held online and 9 students from partner universities participated.

〈※Number of participants in "FY2021 Waseda Social Innovation Online Symposium" conducted online due to the impact of COVID-19 →〉

	2021	
	Plan	Results
Outbound	10	0 (41)※
Inbound	30	0 (9)※

■ Forming the University Network with Quality Assurance

-The School of Social Sciences at Waseda University, the lead school for the project, has made progress in hiring a full-time faculty member with experience in coordinating inter-university exchange projects. In addition, the CampusAsia core subjects linked to the curriculum and its educational system have begun in preparation for the in-person student exchange from FY2022.

-Regular online discussions have been held among the four universities, and we have begun to consider a joint education model and educational methods for the project.

■ Promotion of Student-Mobility Environment

○ Inbound

For this project, we have hired a contracted staff member with excellent English skills to support incoming students in cooperation with their home universities. The Center for International Education manages residence data for all international students at the university and provides support for visa issues such as changing residence status and renewing the period of stay. Staff assigned to each campus also provide constant support. Orientation programs for international students in Japanese and English will be held at the time of enrollment to provide information on study and general life at the university. Students who have difficulty performing well in the program will be given individual support and academic guidance to prevent illegal stay.

○ Outbound

We have employed a contracted staff member with experience in providing support for exchange students at several universities. The university has established a generous support system for visa acquisition, while also requiring all students studying abroad to attend a risk management orientation. When studying abroad, students are required to purchase overseas travel insurance, and a 24-hour support desk (Japanese and English) is available to respond to emergencies. Students can obtain information and advice on countries and universities through the Waseda Global Gate at the Center for International Education. Prior to participation in the program, the staff and faculty members in charge of study abroad programs will provide orientation on matters such as handling of credits, course models and completion requirements.

■ Internationalization of the University, Information Disclosure and Publication of Outcomes

-In preparation for the start of the in-person student exchange in FY2022, we are working to enhance the content of the website (in Japanese and English) and PR materials in order to promote this program.

In addition to recruiting excellent students and announcing program results, the website also announcing the achievements of participating students. (<https://www.waseda.jp/campusasia-mode3/>)

-The "FY2021 Waseda Social Innovation Online Symposium" hosted by Waseda University was held online to provide an overview of the program's education, research and projects to overseas university representatives.

■ Good Practices

-The "FY2021 Waseda Social Innovation Online Symposium" hosted by Waseda University was held to commemorate the launch of this project. The symposium featured an interactive program that included presentations by four faculty members from the Waseda University School of Social Sciences, the lead school for the project, as well as discussions with the participants. This provided an opportunity to jointly confirm the purpose of the program to be developed in the future, as well as the four universities' shared goals and philosophy of fostering human resources capable of bringing about positive change in Asian society, which will be fostered by the four universities.