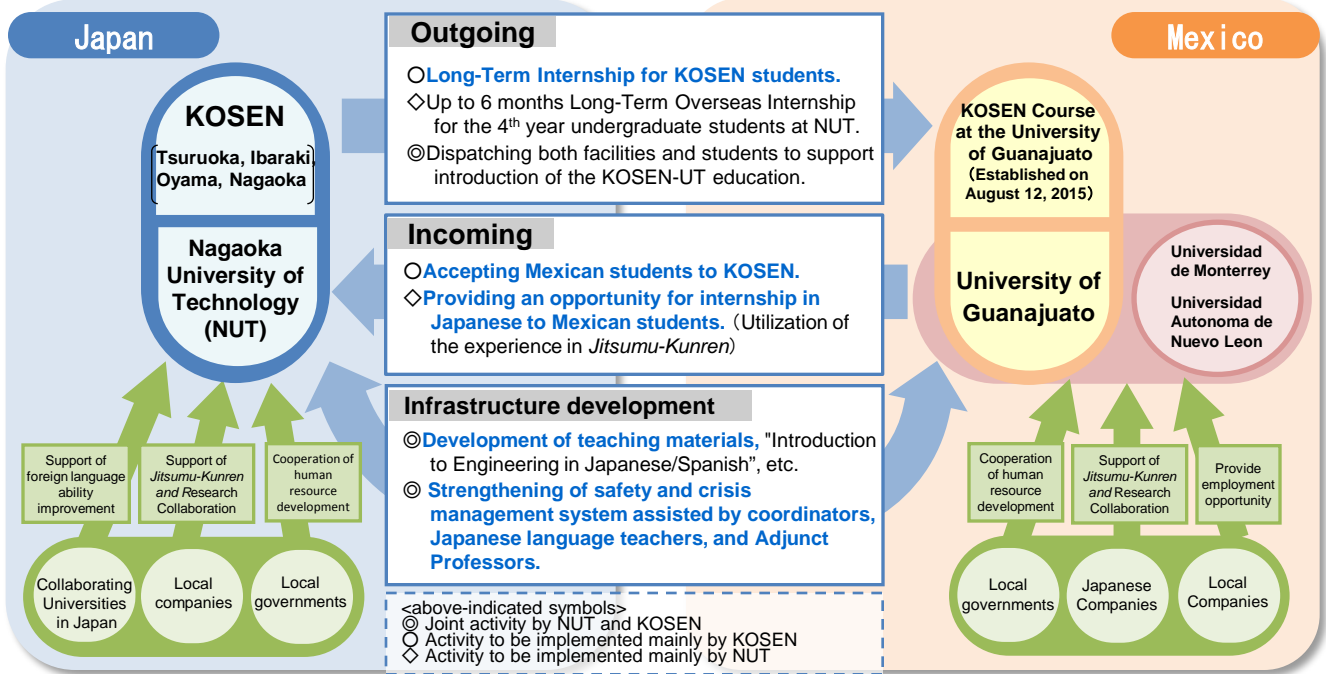


【Project Title】(Project selected for FY2015, Region: Latin America)

『Globalization of Engineering Education Model Starting from Age Fifteen: A Collaborative Program with Mexico, NAFTA Manufacturing Hub』

【Outline of the Project】

This project is aimed to establish KOSEN-University of Technology (UT) Engineering Education Model and deepen it to the bilateral exchange model in gradual and continuous exchange of both Japanese and Mexican students as global collaborative engineering education through the collaboration with Mexican universities and organizations based on Japanese College of Technology (KOSEN) model.



【Outline of Exchange Program】

- ① Japan to Mexico: Long-Term Internship for KOSEN students and *Jitsumu-Kunren* for the 4th year undergraduate students.
- ② Mexico to Japan: Study Abroad and Internship from KOSEN.
- ③ Enhancing Twinning Programs and Double Degree Programs with Mexican Universities.
- ④ Development of educational method and teaching materials for the foundation of KOSEN-UT Engineer Collaborative Education Model.

(Note)
Jitsumu-Kunren is the long-term internship system (approx. 6 months) based on the Practical Engineer Development Program, developed by the collaboration between NUT and accepting organizations.

【Type of Human Resource Trained by the Project】

In this Project, KOSEN and NUT will nurture leading and practical engineers capable of research development for resolution of the issues through the opportunities and experiences in study abroad and interaction between Japanese and Mexican students in the same generation, as well as gaining the firsthand knowledge, understanding of diverse values and recognition of the importance to resolve the issues on a global scale.

【Characteristic of the Project】

This project will enable to expand KOSEN-UT Engineering Education Model to become a transferable engineering education model with characteristics of educational methodology and supporting education tools (such as technical materials, Japanese learning materials, dealing with multilingual environment).

【Number of Prospective Exchange Students】

	FY2015								FY2016								FY2017								
	A	Bo	Br	Ch	Co	M	Pa	Pe	A	Bo	Br	Ch	Co	M	Pa	Pe	A	Bo	Br	Ch	Co	M	Pa	Pe	
Outgoing Students						17									24									25	
Incoming Students						0									20									25	
	FY2018								FY2019																
	A	Bo	Br	Ch	Co	M	Pa	Pe	A	Bo	Br	Ch	Co	M	Pa	Pe									
Outgoing Students						24									25										
Incoming Student						26									25										

A: Argentina Bo: Bolivia Br: Brazil Ch: Chile Co: Columbia M: Mexico Pa: Panama Pe: Peru