

FY2017 Inter-University Exchange Project, Hiroshima University

Support for the Formation of Collaborative Programs with Russian and Indian universities

【Name of project】 (Adopted year: FY2017, (Type A (India)))

International Linkage Degree Program for Developing Innovators Transforming Advanced Technology to Social Goals

【Summary of Project】

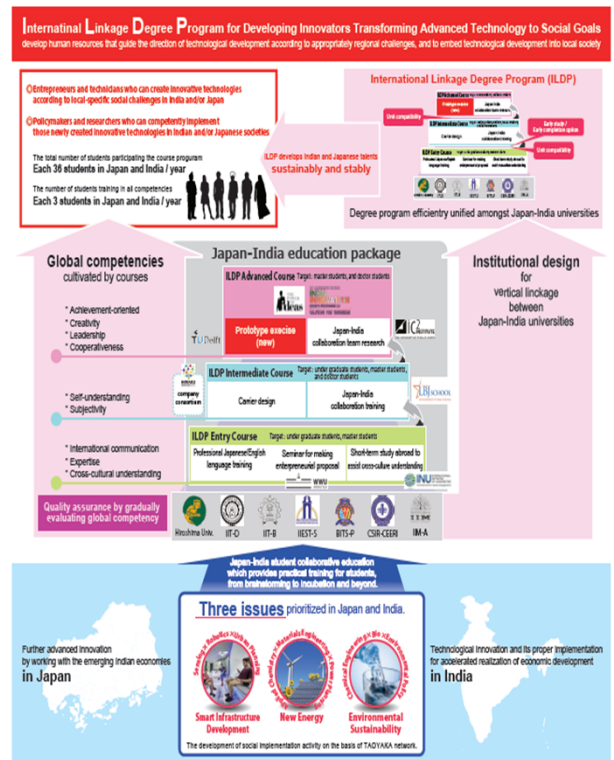
Through the scheme of "Japan-India Education Package", we develop innovators who can transform advanced technologies for the use of Japanese and Indian societies in three interdisciplinary fields: "Smart Infrastructure Development", "New Energy", and "Environmental Sustainability". To expand the educational exchange into a degree program, we will establish the International Linkage Degree Program (ILDP) in collaboration between Hiroshima University (HU) and six partner universities in India in order to develop leaders who can guide the direction of technological development according to regional challenges, and thus embed such technologies appropriately into local society.

【Summary of Exchange program】

The "Japan-India Education Package" scheme strengthens global competencies in a stepwise fashion. Eventually, we aim to establish an innovative ILDP between HU and its partner universities in India.

The Japan-India Education Package is composed of the following three courses:

- **ILDP Entry Course:** By targeting undergraduate and master program students, this course aims to allow students to acquire global competencies for international communication, expertise, and cross-cultural understanding through the following three educational practices: "specialized foreign-language training", "exercises in making entrepreneurial business proposals", and "short-term study abroad to assist in cross-cultural understanding". For quality assurance, the BEVI Test, an assessment tool used to measure learning outcomes, will be conducted before and after the study abroad period.
- **ILDP Intermediate Course:** This course is for undergraduate, master, and doctoral program students. Through the two initiatives of "Career design" and "Japan-India collaborative training", students will develop self-understanding and independence. Learning outcomes will be evaluated by practitioners at the host institutions.
- **ILDP Advanced Course:** This course is for master and doctoral program students. Students will acquire achievement-oriented competency and skills in creativity, leadership, and cooperativeness through "Prototype exercises" and "Japan-India collaborative team research". Learning outcomes will be evaluated based on two types of practical entrepreneurship contest.



【Global Human Resource project】

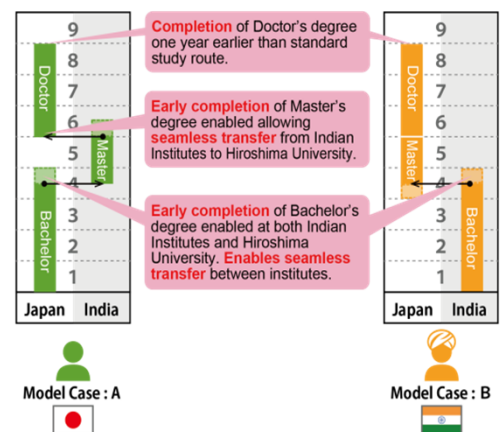
To train future leaders who can contribute to solving social problems in Japan and India through coordination with specialists in different fields. This project will develop

- Entrepreneurs and engineers who can create innovative technologies according to regional-specific social challenges in India and/or Japan.
- Policymakers and researchers who can competently implement those newly created technologies in Indian and/or Japanese societies.

【Features of the project】

1. Japan-India Education Package scheme to strengthen the global competencies of students by providing an education package consisting of various exchange programs, adding to and improving on existing programs at Hiroshima University in a stepwise fashion.
2. Proposal-based support system, which selects and supports excellent proposals made by Japanese and Indian students throughout the program.
3. Japan-India collaborative team training, which provides practical training in entrepreneurialism, from brainstorming to incubation.
4. Producing entrepreneurs, engineers, and policy-makers who can contribute to the development of the three interdisciplinary research fields of i) Smart Infrastructure Development, ii) New Energy, and iii) Environmental Sustainability.
5. Linkage-type degree program that, through the adjustment and utilization of the different educational systems that exist in Japanese and Indian universities such as unit compatibility, early study, and early completion options, does not require an extension to the standard study route. (See diagram, right)

International Linkage Degree Program (ILDP)



Degree program efficiently unified amongst Japan-India universities

【Projected number of participants】

	2017	2018	2019	2020	2021
Outbound	18	36	36	36	36
Inbound	18	36	36	36	36

1. FY2017 Progress

【Hiroshima University】

【Name of project】(Adopted year: FY2017, (Type A ,India)

International Linkage Degree Program for Developing Innovators Transforming Advanced Technology to Social Goals

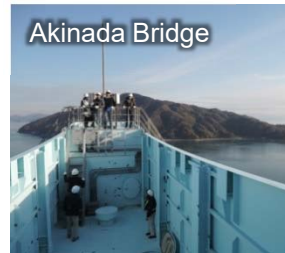
■ Exchange Programs



Lecter



Pilani Campus



Akinada Bridge



Workshop

〈ILDP-START+ Program in Bits Piani (Mar. 7-20, 2018)〉

〈Inbound :ILDP-Idea Mining Workshop in HU (Dec. 12-18, 2017)〉

Student-Mobility

○ Outbound

In FY 2017, 27 students including 23 Japanese students at Hiroshima University are dispatched through the 3 of 7 programs in "Japan-India Education Package" scheme; ILDP-START+ (ILDP Entry Course), ILDP-Global Internship and ILDP-International On-Site Training (Intermediate Course).

	2017	
	Plan	Results
Outbound	18	27
Inbound	18	17

○ Inbound

In FY 2017, Hiroshima University accepted 17 international students from 6 Indian universities and institution through the 5 of 7 programs in "Japan-India Education Package" scheme; ILDP-START+ and ILDP-Idea Mining Workshop (ILDP Entry Course), ILDP-Global Internship and ILDP-International On-Site Training (ILDP Intermediate Course) and ILDP-Prototyping Workshop (ILDP Advanced Course).

■ Forming the University Network with Quality Assurance

- Direct discussion with responsible for international education and confirmation of facilities to launch new student exchange program by visiting Hiroshima University faculties and staff to 6 Indian universities and institutions.
- Sharing goals and policies of the project and building relationship among participating universities and institutions through the 1st International Linkage Degree Program (ILDP) Committee Meeting in Hiroshima on 17 January, 2018.
- Substantial discussions for sharing problems to solve launching student exchange program, such as difference of academic calendar and course evaluation system by holding the 1st ILDP Practical Meeting at Hiroshima University in January, 2018.



〈1st ILDP Committee Meeting(January 17, 2018)〉

■ Promotion of Student-Mobility Environment

- Establishment of "ILDP Steering Committee", organization in Hiroshima University responsible for promoting, planning, implementation and management of the project.
- Establishment of "ILDP office" which is exclusively in charge of planning the student exchange program and academic and living supports for students who participate in the student exchange program.
- Offering Courses and syllabus for the student exchange program by common organization at Hiroshima University and expressing the position of each student exchange program throughout the project.
- Offering the opportunities of visiting Japanese companies in India and lectures by Japanese staff in the dispatch program by requesting cooperation.

■ Globalization of the university, Information disclosure and Publication of outcome

- Strong publications to the outside of universities by holding the 1st ILDP Committee Meeting with governmental and local governmental officials of Japan and India including the Indian Ambassador in Japan as well as representatives of 6 Indian Universities and Institutions and Hiroshima University.
- Self evaluation, checking the student exchange program in FY 2017 and concrete discussions to achieve final goal of the project, construction of the International Linkage Degree Program at the 1st External Evaluation Committee with authorities of inside and outside of Hiroshima University.



〈1st External Evaluation Committee (March 2, 2018)〉

■ Good Practices

- Promotion of efficiency of the period from the planning to substantial implementation of the student exchange program with Indian universities and institutions by using the existing student exchange scheme in Hiroshima University.