

# Top Global University Project (Type B) Kanazawa University

## 1. Outline

### 【 Name of project 】

Developing Human Resources to Lead the Global Society and Establishing the Kanazawa University Brand by Thorough Internationalization

### 【 Future vision of the university planned in TGU project 】

As it aims to carry out reforms in accordance with its status as a research university dedicated to education, while opening up its doors to both local and global society and to serve as the stronghold of intellect in East Asia as called for in its university charter, Kanazawa University has been devoting all its energies toward educating human resources capable of thriving as key members of global society. In recent years, globalization has been accelerating in various fields and the roles expected of institutions of higher education have been increasing. In response to those demands, Kanazawa University has been carrying out reforms energetically. Triggered by our appointment to a Top Global University, Kanazawa University aims to accelerate these reforms and realize the following vision in 10 years by thorough university reforms and internationalization under the leadership of the President and to become a role model of university reforms.

1. Be a university that provides high-quality education on international standards based on the unique global standard for human resources training (KUGS: Kanazawa University "Global" Standard)
2. Be a university that leads the globalization of Japan by nurturing "Kanazawa University Brand" human resources who take active roles in the world
3. Be a university that is the core of the world's network of higher education and research in East Asia

### 【 Summary of Project 】

Kanazawa University aims to establish the Kanazawa University (KU) Brand by strongly promoting the reforms in education based on KUGS (Kanazawa University "Global" Standard) indicating the images of human resources we try to nurture, and the internationalization of the faculty and administrative staff. Also, we aim to establish "Kanazawa University Model" for training human resources in order to drive globalization in the Hokuriku region and to produce the human resources who can thrive as leaders in today's knowledge-based society. To achieve these objectives, we will accelerate the internationalization of the entire university as well as the university reforms necessary for internationalization based on the seven strategies on education, internationalization, and governance.

**University Charter**

**To tackle reforms as "a research university dedicated to education, while opening up its doors to both local and global society"**

To train human resources with a rich sense of humanity who are equipped with specialized knowledge, ability to search for problems, and a global point of view and ethic

---

**Kanazawa University "Global" Standard**

The specific vision of human resources trained at KU in the ever-globalizing international society of the present, in order to manifest the basic educational goals set in the university charter

To train human resources equipped with the following abilities, physical strength, and human resilience, who can actively fulfill his/her duties as a member of the human race in the international society, and tackle the present problems fearlessly as the core leader of the society	<ol style="list-style-type: none"> <li>1. Know one's own position</li> <li>2. Know and train oneself</li> <li>3. Express thoughts and values</li> <li>4. Connect with the world</li> <li>5. Tackle future problems</li> </ol>
---	---

**Kanazawa University in 10 years**

**Be a university that provides high-quality education on international standards based on the unique global standard for human resources training (KUGS).**

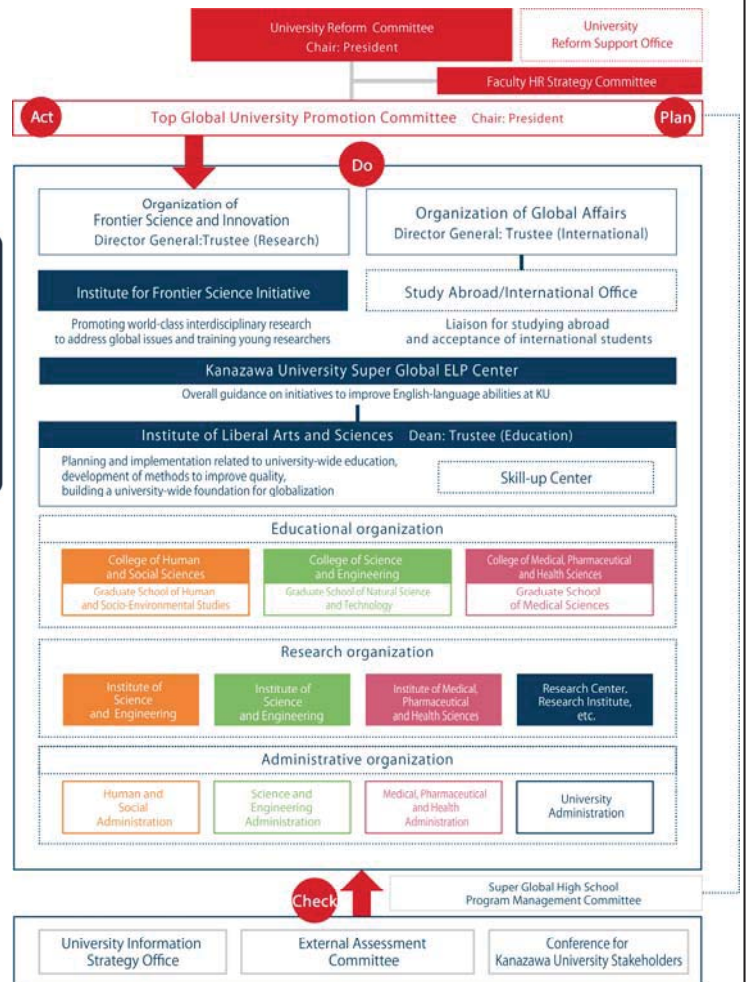
Delivering innovative education that fosters the ability, strength, and human power to succeed in international society.

**Be a university that is the core of the world's network of higher education and research in East Asia.**

Attracting a concentration of diverse human resources from across Japan and around the world as the center of an advanced education and research network spanning Asia, the Americas, and Europe, through strategic educational and research alliances with outstanding universities overseas.

**Be a university that leads the globalization of Japan by nurturing "Kanazawa University Brand" human resources who take active roles in the world.**

Educating and graduating human resources under the KU brand who can thrive as core leaders in today's knowledge-based society, regardless of region or country.



## 【Summary of the 10-year plan】 Seven Strategies

### **1. Realizing the KU Brand of Education Based on KUGS, Centered on the Institute of Liberal Arts and Sciences**

- Establishing the Institute of Liberal Arts and Sciences which will be the core of internationalization of education and improving the students' communication skills in English
- Defining KUGS (Kanazawa University "Global" Standard) consistent across undergraduate and graduate courses and developing a new curriculum based on KUGS and adopting a quarter system accordingly

### **2. Accelerating Globalization of Undergraduate Education, with the School of International Studies Serving as a Model Program**

- Applying the results of various international programs in the School of International Studies to other schools
- Adopting at least 1 international program in each course based on mutual recognition of units, developing joint degree programs integrating classes through joint recognition of units, and developing curricula to enable students to experience an international environment while in Japan

### **3. Setting up a Special Education/Research Zone to Enhance Research Capabilities, and Advancing Postgraduate Education and Research in Response to Globalization**

- Setting up "Institute for Frontier Science Initiative (InFiniti)" to promote interdisciplinary research to address global challenges, as international joint research
- Choosing particularly capable graduate students and providing economic assistance and interdisciplinary education at InFiniti as well as sending them to outstanding research institutions abroad, to train them in the teaching methods needed for future educators as "High Ranking Teaching Assistants"

### **4. Enhancing International Education and Research Networks as well as Kanazawa University's Overseas Facilities**

- Using a sabbatical research system to enhance ties with overseas research institutions on a one-to-one basis and develop future inter-organizational exchange
- Developing overseas facilities in America, Europe and Asia where KU staff will be on permanent assignment and developing these into overseas satellite campuses with KU faculty on permanent assignment in the future

### **5. Setting up the Kanazawa University Super Global ELP Center of the Tufts University English Language Programs and Enhancing English-Language Education**

- Setting up the Kanazawa University Super Global ELP Center with the Tufts University English Language Programs, renowned for their high-quality English education, on the KU campus in order to improve the English ability of the students, faculty and administrative staff.
- Establishing syllabi, numbering systems, teaching methods, and evaluation methods in partnership with Tufts University and participating in Tufts University's international educational network

### **6. Driving Globalization in the Community Through the Hands-on Program Extending Beyond Community Boundaries and Partnership with the SGH Program**

- Providing opportunities for all international students at KU to interact directly with the local community together with Japanese students
- Utilizing KU's network of affiliated schools from kindergarten through high school to educate faculty able to adapt to globalization in primary and secondary education
- Building a new model for linking high school with university to realize synergies in globalization with partnership with Kanazawa University Senior High School (chosen for the Super Global High School program)

### **7. Swift, Powerful Governance Reforms Under the Leadership of the University President**

- Establishing "University Reform Promotion Committee" to serve as the headquarters for the entire university reforms and advancing strong governance reforms centered on university management and faculty HR systems, under the leadership of the President

## 【Featured initiatives (Internationalization, University reform, Education reform)】

○ In order to train human resources equipped with the 5 abilities indicated in KUGS, physical strength, and human resilience, we will launch "Empowerment Program" which will be a part of graduation requirements. The purpose of this program is for the students to recognize the importance of physical and mental strength, to accept diverse ways of thinking, and to become aware that they are members of the society. Students are expected to complete one of the following two programs in their 1st, 2nd or 3rd year. One is "Overseas Dispatch Program (Study Abroad Program)" and the other is "Hands-on Program Extending Beyond Community Boundaries (Local Activity Programs)" in which Japanese students and international students work together. Through activities on and outside of campus, the program aims to nurture human resilience to survive in the international society of the future.

○ Tufts University, one of our international partner institutions (University-Level), is an American private institution established in 1952 whose campus is located near Boston. It is renowned for their high-quality English Language Program as well as high-quality education such as small classes of less than 15 students and "active learning." As their sole partner in Japan, we operate the KU Super Global ELP Center in cooperation with Tufts University. The teachers dispatched from Tufts University hold classes for the faculty to improve their ability to lecture in English, classes of business English for the administrative staff, and classes for the students to prepare for their study abroad.

○ We organize "Conference for Kanazawa University Stakeholders" consisting of the stakeholders of the university. We report the university's status of education, research and governance at the conference and ask for their opinions and requests, which will be reflected to the university governance.

## 2. FY2014 Progress

### ■ Common indicators and targets

#### Internationalization

##### ○ Kanazawa University Super Global ELP Center

In March 2015, “Kanazawa University Super Global ELP Center” was established inside Kakuma Guest House. This center was set up in cooperation with Tufts University, which is one of our partner institutions in America, and aims to improve the English ability of the students, faculty and administrative staff.

##### ○ Global Communication Room at University Library

On March 27, 2015, the “Global Communication Room”, a new space for interaction between international students and Japanese students, opened in the Natural Sciences and Technology Library. This room, equipped with discussion and presentation equipment, was established to promote student interaction through “learning.”

##### ○ Kanazawa University Ghent Office

On May 19, 2015, Kanazawa University Ghent Office was established in Ghent University, Belgium. Kanazawa University and Ghent University have concluded the agreement since July, 2009.

##### ○ Kanazawa University Alumni Association in Thailand and China

In 2014, two Kanazawa University Alumni Associations abroad were established: Thailand in August and China in November. These follow the three Alumni Associations abroad which had been established before 2013: Boston, Vietnam and Myanmar.



〈Kanazawa University Ghent Office〉

##### ○ Tobitate! Next Japan

Tobitate! Next Japan, a scholarship program by public-private partnership, began in 2014. For the first period, 4 Kanazawa University students out of 13 applicants were accepted to the program, and for the second period, 7 students out of 22 were accepted. The number of accepted students and applicants were the fourth largest of all national universities.

#### University reform

##### ○ Top Global University Project Planning and Promotion Headquarters

On February 10, 2015, Top Global University Project Planning and Promotion Headquarters was established to promote Kanazawa University’s Top Global University project “Developing Human Resources to Lead the Global Society and Establishing the Kanazawa University Brand by Thorough Internationalization.”

##### ○ Kanazawa University “SGU” Kick-Off Symposium

On March 27, 2015, Kanazawa University hosted Kanazawa University “SGU” Kick-Off Symposium “Challenges in Establishing Kanazawa University ‘Global’ Standard.” Approximately 230 persons from within and outside the university attended the event. After the opening address by the President and the presentation by Vice President introducing the SGU project, Mr. Yasushi Akashi, Former Deputy Secretary-General of the United Nations presented his keynote speech.



〈Kanazawa University “SGU” Kick-Off Symposium〉

##### ○ Kanazawa University Top Global University Information Session for Faculty and Staff

On June 4, 2015, “Kanazawa University Top Global University Information Session for Faculty and Staff” took place and more than 400 faculty and staff attended the event. The President and Vice Presidents introduced the overview of the project, the initiatives and the vision in 10 years in the future.

#### Education reform

##### ○ Super Global English Language Program for students

In April 2015, Super Global English Language Program for students started at the Kanazawa University Super Global ELP Center. This program consists of classes of small number of students by the academic staff dispatched from Tufts University, which aims to improve the students’ English ability to study abroad.

##### ○ English Learning Adviser

In April 2015, the English Learning Adviser System was implemented to improve the students’ English skills. The adviser is in charge of counseling with the students, supporting their English learning via e-learning and holding various classes such as TOEIC preparation class.

##### ○ English Proficiency Test For Entrance Exam

In the entrance exam for 2015 fiscal year, the School of International Studies accepted the score of English Proficiency Test such as TOEIC and TOEFL. The score higher than the designated score was regarded as full marks of English subject in National Center Test for University Admissions.

## ■ University's own indicators and targets

### ○ Conferment Ceremony for Kanazawa University Collaborative Professor

On March 22, 2015, the Conferment Ceremony for Kanazawa University Collaborative Professor took place and three newly appointed collaborative professors were handed the conferment certificate. They are expected to help promote international exchange activities, recruit students, and follow up on exchange students in their destination countries.



〈Conferment Ceremony for Collaborative Professor〉

### ○ English Language Program for Faculty

In March 2015, English Language Program for Faculty (trial) started at the Kanazawa University Super Global ELP Center. 22 participants attended onsite courses in March and are taking online courses during the semester.

### ○ Sabbatical Leave

In 2014, 6 faculty members took sabbatical leave and started their research abroad. In 2015, another 6 are going to research abroad and more faculty members are expected to take sabbatical leave in the future.

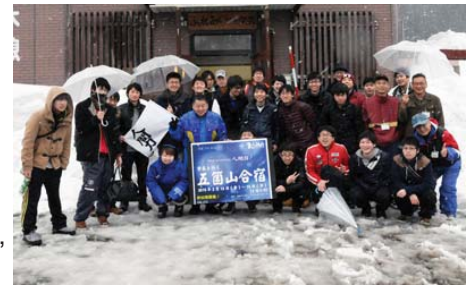
## ■ Featured initiatives based on the characteristics of the university

### ○ Institute for Frontier Science Initiative (InFiniti)

On April 1, 2015, Institute for Frontier Science Initiative (InFiniti) was established to promote interdisciplinary research to address global challenges as international joint research and to provide graduate students interdisciplinary education.

### ○ Empowerment Programs

As a part of Empowerment Programs, "Camp in Noto with President" took place in August, 2014, and "Camp in Gokayama with President" in February, 2015. 66 students in total joined the events. Empowerment Programs were implemented to train human resources equipped with the 5 abilities indicated in KUGS, physical strength and human resilience.



〈Camp in Gokayama with President〉

### ○ Faculty Development Programs about Classes Taught in English and Undergraduate Courses Entirely Taught in English

In March 2014, faculty development programs took place inviting lecturers from Akita International University and Tokyo Metropolitan University. The participants shared ideas about how to build and manage classes taught in English and undergraduate courses entirely taught in English.

## ■ Free description

### ○ Residence for Japanese and International Students

Kanazawa University will construct student residences where Japanese students and international students live together. Kanazawa University Student/International Student Dormitory "SAKIGAKE I," which accommodates 104 students, was completed in October, 2014 and "SAKIGAKE II," which accommodates 200 students will be completed in 2016. In the future, three student residences for Japanese students located in the city center will be relocated to Kakuma Campus as a residence for both Japanese and international students which accommodates about 800 students.



### ○ Kanazawa City, a Mixture of History, Culture and Modernity

Kanazawa University is located in Kanazawa City, which is situated on the Sea of Japan side in the middle of the Japanese archipelago. In March 2015, Hokuriku Shinkansen opened and now it takes only two and a half hours from Tokyo to Kanazawa. While the city is one of the largest cities on the Sea of Japan, its population is moderate 450,000 approx., and the city still preserves the taste of Edo era as well as various traditional cultures.

### ○ Kakuma Campus

Kakuma Campus, the main campus of Kanazawa University, is 43 times as large as Tokyo Dome with the total area of 2,000,000m<sup>2</sup>. Being surrounded by abundant nature, the campus provides the ideal environment for students to study. The campus is handy for shopping and other activities, as it takes only 5 minutes by car to the nearest shopping area and 15 minutes to the city center. Also, both swimming beaches and ski areas can be reached within 2 hours by car.



〈 Student/International Student Dormitory "SAKIGAKE I" 〉



〈 Kakuma Campus, Kanazawa City and the Sea of Japan 〉

### 3. FY2015 Progress

#### ■ Common indicators and targets

##### Internationalization

###### ○ New Programs to Encourage Study Abroad

Having developed new study abroad programs, the number of students who studied abroad nearly doubled (+114 students) from FY2014 to 248 students in FY2015. We are now able to send more than 500 students abroad in FY2016 through the existing and new programs. In April 2016, “Study Abroad Office” was established in order to provide comprehensive and integrated support to send our students abroad smoothly.



###### ○ Globalization of University Libraries

In March 2016, “Global Communication Studio/Corner” opened in the 3 KU libraries to facilitate communication between international students and Japanese students. In the Studios, graduate students appointed as “Learning Concierge for International Students (LeCIS)” provide learning support for international students, and help Japanese students to improve their foreign language skills.



###### ○ Enhancement of Support for International Students

Since October 2015, a full-time counselor has been providing counseling to international students in English. Also, “International Exchange Advisor” system was implemented to officially appoint the local residents who had been voluntarily supporting our international students as advisors of KU. These people have contributed to enhancement of support for international students especially in their daily life and mental well-being.

###### ○ Enlargement of Overseas Alumni Association Network

In January 2016, “Kanazawa University Alumni Association in Indonesia” was established as the sixth Overseas Alumni Association, and more than 140 participants including the Indonesian alumni attended the Foundation Party. Since the First KU Overseas Alumni Association General Conference took place at KU in October 2015, the networks between KU and those associations as well as between the associations have been growing. These networks are expected to expand exchanges both in research and education.



##### University reform

###### ○ Reinforcement of the Organization to Implement the Project

The President directly interviews candidates for Dean and discuss the university’s policy including the TGU project, so that the coordination to implement the project will be reinforced and the project will progress promptly and adequately.

###### ○ Reflection of Stakeholders’ Opinions

In July 2015, “Conference for Kanazawa University Stakeholders” took place for the first time. There were reports on the recent status of the university’s research, education and management including the TGU project. Requests and opinions from the stakeholders will be reflected in the project.



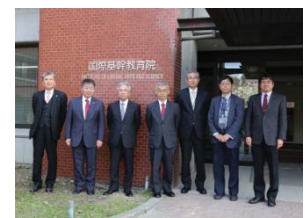
###### ○ Appointment of Excellent Researchers through Implementation of New Personnel Systems

By FY2015, we have appointed 37 excellent researchers including 3 foreigners as “Research Professors,” using the new personnel systems such as Annual Salary implemented in January 2015 and Concurrent Appointment implemented in April 2015.

##### Education reform

###### ○ Drastic Reforms in Education Centered on Institute of Liberal Arts and Science

In April 2016, “Institute of Liberal Arts and Science” was established as a new institute responsible for the new curriculum in general education based on “Kanazawa University ‘Global’ Standard (KUGS.)” Three hundred courses in general education have been reorganized into 30 GS General Education Course, so that all students can acquire knowledge and skills expected of KU students.



###### ○ Encouragement of Study Abroad via Quarter System

Kanazawa University has adopted the quarter system since FY2016. Each school will set a quarter without compulsory courses to encourage students to join short-term study abroad programs. Also, by taking advantage of quarter system, students will be able to study abroad for half/one year without extending their period of enrollment.

###### ○ Enhancement of English-taught Courses Based on the Manifests

In FY2015, Trustee (Education and Student Affairs) clearly stated in the manifest for students as well as the manifest for faculty and staff why and how KU strives to increase the number of courses offered in English. By setting these manifests as the bases for enhancement of English-taught courses, the number of courses offered in English increased by 3.6 times (+422 courses) from FY2014 to 548 courses in FY2015.

## ■ University's own indicators and targets

### ○ Improvement of English Language Skills and Reinforcement of FD through Cooperation with Tufts University

"Kanazawa University Super Global ELP Center," established in April 2015 in cooperation with Tufts University (USA), offers English courses not only for students but also for faculty and staff. By FY2015, 97 faculty and staff members have attended the courses. In February 2016, Director and Associate Director of Tufts University's Center for the Enhancement of Learning and Teaching (CELT) delivered lectures on their advanced and renowned programs for faculty development.



### ○ Development of Overseas Facilities through Administrative Staff Exchanges

In FY2015, we started a program for staff training, which sends administrative staff to selected partner institutions, and 2 staff members have been sent to Tufts University (USA) and 2 others have been sent to Ghent University (Belgium) for 8 days to 2 weeks. They provided information about KU, collected information on the partner institution, and engaged in student recruitment.



### ○ Training of "High Ranking Teaching Assistants" as Future Educators

In FY2015, 14 doctoral students were hired as "High Ranking Teaching Assistants" by the Institute for Frontier Science Initiative. High Ranking Teaching Assistants receive training on teaching method at the Skill-up Center and assist professors, and they are expected to become educators at university in the future.

### ○ Reforms in Entrance Exam to Accept Talented Students

The general information on the new format of entrance exam, which will be implemented in FY2018, was released in May 2016. In this new system, KU accepts applicants in two broad categories: Humanities and Sciences, and the accepted students will take enough time to choose their major after their enrollment. KU expects to acquire students with more diverse interests through this new system. Also, the School of International Studies started to adopt the score of English Proficiency Test in the entrance exam for FY2015, and all the other Schools plan to follow in the entrance exam for FY2018.

## ■ Featured initiatives based on the characteristics of the university

### ○ Symposium for High School-University Joint Development of Global Human Resources

In March 2016, KU hosted the 2nd KU-GLOCS Symposium with the theme of high school-university joint development of global human resources in cooperation with 6 high schools in Ishikawa, most of which are selected as SGH and/or SSH, and approximately 280 people including 160 high school students attended the event. KU will continue to strengthen the ties with high schools, in cooperation with the KU "Global Science Campus" project, to acquire excellent students.



### ○ Promotion of TOBITATE! Young Ambassador Program

In order to increase the number of students studying abroad in TOBITATE! Young Ambassador Program, KU offers various supports for students such as briefing sessions, individual consultation by administrative staff in charge, and mock interviews with the President.



### ○ Enhancement of Community Learning "Super" Experience Program to Strengthen Human Resilience

Community Learning "Super" Experience Program, which started as one of the Empowerment Programs in FY2014, became an official course of general education in FY2015. One hundred and twelve students including 20 international students in total participated in the 4 sessions of the program. The program has received a lot of positive feedback from the participants, including comments on gaining valuable experiences such as experiencing local culture and staying with local people on homestay.



## ■ Free description

### ○ Promotion of the Project via Various Media

In addition to the KU TGU project Website, we started to issue a monthly newsletter called "KU-SGU Newsletter" in 2015 to inform our initiatives for the TGU project briefly. Also, we launched the Facebook page for the project to provide information on TGU-related events and reports from the staff members sent abroad for training in a friendly way.



### ○ New Promotional Video Showing the University's Globalization

In December 2015, a brand-new promotional video showing the globalization of Kanazawa University was released. This video was directed by Mr. Takeshi Maruyama, who has directed music videos of various popular music groups, and a lot of KU students including international students appeared in the video as extras. Beautiful footages shot on KU campus and various places in Kanazawa city, along with the delightful music, are woven into a video production like a short film.



## 4. FY2016 Progress

### ■ Common indicators and targets

#### Internationalization

##### ○ Strong Promotion of Sending Japanese Students Abroad

In April 2016, "Study Abroad Promotion Committee" was established as an overall controlling and supervising committee for study abroad plans and "Study Abroad Office" to provide centralized support for students going abroad.

The number of students who went abroad drastically increased due to development of new study abroad and internship programs. Over 500 students (mainly undergraduate students) went abroad which is nearly double the number compared to FY 2015. In addition, Study Abroad Scholarship was newly established in order to further encourage our students to study abroad.

##### ○ Construct New Residence for Japanese and International Students

In March 2017, a new student / international student dormitory "Hokumei" (accommodating 200 people) was completed. The buildings are two or three-storied ferroconcrete, and 2 Japanese students and 3 students of various nationalities live in 1 unit share house. Together with "Sakigake," which was constructed earlier, we are now able to accommodate 304 students. The new dormitory is expected to further expand the global living environment like a new town being created within the campus, and it will lead to a more global campus for Kanazawa University.

##### ○ Reforms in Scholarships to Accept More International Students

"Study at KU Scholarship" was established as a part of economic support for international students. The purpose of the scholarship is to build a global collaborative network and to accelerate brain circulation by encouraging international students' motivation to study and research at Kanazawa University.

##### ○ Kanazawa University Medford Office, Joint Symposium with Tufts University

In December 2016, Kanazawa University Medford Office was established, and the commemoration ceremony took place on Tufts University Medford Campus. The office is expected to not only promote exchanges with Tufts University but also function as a base for educational research exchange in the United States. In addition to establishing the office, the First Tufts University/ Kanazawa University Joint Symposium took place to further accelerate exchanges on educational research, joint research and global brain circulation between the two universities.

##### ○ Establishment of Kanazawa University Beijing Office, Second Kanazawa University Alumni Meeting in China, and Research Exchange Conference in celebration of the Grand Opening of the Kanazawa University Beijing Office

In October 2016, Kanazawa University Beijing Office was opened in order to function as a base for recruiting international students, supporting Kanazawa University students who study abroad, encouraging international joint research and so on. To celebrate this occasion, Second Kanazawa University Alumni Meeting took place in Beijing in March 2017. Approximately 120 persons attended, including international alumni and guests from partner institutions in China. On the same day, a research exchange conference took place in celebration of the opening of the Beijing office. Thirty-one students from Kanazawa University and 71 students from various top-level Chinese universities attended. The purpose was to encourage the student participants to exchange information about research from top-level universities.

#### University reform

##### ○ Establishment of YAMAZAKI Plan 2016

"Yamazaki Plan 2016" was formulated as a new reform action plan in order to further promote world-class excellence in educational research and social implementation.

##### ○ New Faculty Evaluation System

A new faculty evaluation system, which appropriately evaluates research and educational activities as well as social contribution activities of faculty members and reflects the evaluation results to their salary, was implemented. It aims to motivate faculty members and revitalize research and educational activities.



## Education reform

### ○ Establishment of "Institute of Liberal Arts and Science" and Start of GS (Global Standard) Course

In April 2016, "Institute of Liberal Arts and Science" was established as a new institute responsible for the new curriculum in general education based on "Kanazawa University 'Global' Standard (KUGS.)" Three hundred courses in general education have been reorganized into 30 GS General Education Courses, and textbooks as well as the class operation method are commonized in order to eliminate variation on teaching content and evaluation method, so that all students can acquire knowledge and skills expected of KU students.

### ○ English Courses to Train Four Skills

English courses required for all 1st year undergraduate students was reformed to "EAP (English for Academic Purposes)" and "TOEIC Preparation." This reform enables students to acquire more "usable" English by practically train the four skills in English (reading, writing, listening and speaking).

In addition, TOEIC (L& R) IP Test was implemented as the final exam of the 4th quarter, and the average score was 528 point (for approximately 1,600 candidates). This score result will be analyzed in detail for further improvement of classes.

### ○ English Proficiency Test for Entrance Exam

In the entrance exam for fiscal year 2015, the School of International Studies accepted the score of English Proficiency Test such as TOEIC and TOEFL that is higher than designated score as equivalent to full marks in English subject of National Center Test for University Admissions. These test scores will be accepted university-wide from fiscal year 2018.

## ■ University's own indicators and targets

### ○ Tobitate! Next Japan

Tobitate! Next Japan, a scholarship program by public-private partnership, began in 2014. Various kinds of support such as Tobitate! information session, private consultation and interview practice by the President for students who passed document screening are offered to students to encourage their application. In February 2017, the selection result of the sixth batch of TOBITATE! Young Ambassador Program was announced, and Kanazawa University had 24 successful candidates, which was the 3rd largest number after Kyushu University (28 candidates) and Waseda University (25 candidates), and the 2nd among national universities.

### ○ Strengthen Functions of Overseas Bases by Promoting Staff Exchanges

In order to improve administrative staff's global mindset, Kanazawa University is sending administrative staff to selected partner institutions. In FY 2016, 3 staffs were sent to Tufts University (USA) and 2 staffs to King. Mongkut's Technology Thonburi (Thailand). They provided information about our university, collected information on the partner institution and engaged in student recruitment. Also, Kanazawa University is receiving administrative staff from partner institutions. In May and November 2016, 2 staffs from Tufts University visited Kanazawa and deepened exchanges.

### ○ Enhancement of Community Learning "Super" Experience Program to Strengthen Human Resilience

Community Learning "Super" Experience Program, which started as one of the Empowerment Programs in FY 2014, became an official course of general education in FY 2015. In FY 2016, 111 students including 10 international students participated in the 4 sessions of the program. By undertaking training to acquire the knowledge of local traditional culture and lifestyle in advance in coordination with regional groups such as Ishikawa City College conducted by University Consortium Ishikawa, the students were able to further empower human resilience as they joined the program.

## ■ Featured initiatives based on the characteristics of the university

### ○ Symposium for Global Career

In March 2017, Kanazawa University hosted the 3rd KU-GLOCS Symposium with the theme of Global Career in cooperation with 11 high schools in Ishikawa, most of which are selected as SGH and/or SSH, and approximately 180 people including 150 high school students attended the event. This symposium was planned and run in collaboration with KU-SGU Student Staff mentioned next.

### ○ KU-SGU Student Staff

In FY 2016, "KU-SGU Student Staff," a group of Kanazawa University students who cooperate with the university to promote our Top Global University Project, was established. The whole idea of this group is mainly to plan and conduct activities for students to promote globalization of the university such as Study Abroad Orientation and "Career" × "Global" Seminar, and they have already organized 5 events.





## 5. FY2017 Progress

### ■ Common indicators and targets

#### Internationalization

##### ○ Various Study Abroad Programs

In 2017, Kanazawa University (KU) set up 25 new Study Abroad programs.

In the "First Step Program," especially designed for overseas beginners, new programs were established for China and Russia.

Regarding overseas internship programs, KU conducted a program at the Maya ruins in Guatemala that made use of cultural resource sciences, which is the particular strength of KU.

KU has developed a variety of programs and dispatched 608 students abroad (Increased 106 year-on-year).



##### ○ Establishment of Double Degree Program with the World's Top-level Universities, Expansion of Overseas Dispatch of Graduate Students by Holding Research Joint Symposium.

In the graduate school program, KU is gradually expanding its overseas dispatch of graduate students to foster highly specialized human resources who have a global awareness and ability to pursue one's own ends.

In 2017, KU implemented seven overseas dispatch programs for graduate students at the Graduate School of Natural Sciences and launched the "Graduate School GS Program," a fusion of different fields; using these and the support for overseas research dispatching by Frontier Science Initiative Higher Education Division by overseas academic dispatch assistance, we sent 307 graduate students overseas (44 more than previous year).



In February 2018, KU held a joint symposium with Ghent University in Belgium and Strasbourg University in France. Particularly at Ghent University, a research exchange meeting for graduate students was held and it promoted exchange of young researchers and graduate students based on research network.

##### ○ Development of New Education Program for International Students

KU implemented KU March-August Program (KUMAP) and KU September-December Program (KUSDP) as new short-term education programs for the international students and accepted about 20 students from the major partner Universities.

In addition, KU was selected for "Inter-University Exchange Project (Russia)" which aims to train global human resources who can play an active role internationally and to strengthen the global development power of university education, and conducted "Russian Cultural Exchange Program (3 weeks)" through which we accepted six students from Russian partner universities.



##### ○ Established the SUN/SixERS Bangkok Office in Thailand

In August 2017, in Bangkok, Thailand, KU established the SUN/SixERS (Six Universities Network/International Education & Research System, Japan) Bangkok Office to be shared by National Six Universities (Kanazawa, Chiba, Niigata, Okayama, Nagasaki and Kumamoto).

Here, we issued a campus guidebook for international students in local language, provide information on our university and offer counseling to local applicants and utilizing it as a base to transmit information.

In commemoration of establishment, "Japan -Thailand Research Exchange Conference 2017" was held to promote research exchange of Japanese graduate students and students from King Mongkut's University of Technology Thonburi and Chulalongkorn University.



##### ○ The Second Kanazawa University Alumni Association General Meeting took place in Hanoi, Vietnam

In January 2018, representatives from KU Alumni Associations of Vietnam, Thailand, Myanmar, China and Indonesia attended the Second KU Alumni Association General Meeting held in Hanoi and reported their activities, discussed further collaboration and further enhancing dissemination of information to study at KU to local students.

The next international alumni association general meeting is planned to be held in Myanmar.

## University reform

### ○ Reorganization of Graduate School and Undergraduate Courses Corresponding to Globalization

From 2018, KU has reorganized the School of Economics, School of Regional Development Studies, and School of International Studies, and engaged in the School of Mechanical Engineering, School of Frontier Engineering, School of Electrical, School of Geosciences and Civil Engineering, and School of Biological Science and Technology. In addition, KU established a joint graduate school (Graduate School of Frontier Science Initiative) with the Japan Advanced Institute of Science and Technology.

## Educational reform

### ○ New Entrance Examination System

In order to secure students with outstanding qualities, abilities and motivation according to the image of ideal human resource by Kanazawa University "Global" Standard (KUGS), KU introduced "batch entrance exam system for the College of Human and Social Sciences and the College of Science and Engineering (for the latter semester)" and "batch entrance exam system for 3 schools of the College of Science and Engineering (for the first term semester) ."

The School of General Education was established at the Institute of Liberal Arts and Science to support students who entered at KU under these new systems, comprehensive liberal arts education and basic education is offered to students under the support of academic advisor.

KU is also considering to develop a high school-to-university program, such as holding high school-to-university roundtable, in order to introduce 'KUGS special entrance examination' which evaluates student's subjectivity, diversity, and cooperation in the future.

### ○ Steady Promotion of Conducting Classes in English

Together with the continued implementation of the Tufts University ELP teacher training program at the Kanazawa University Super Global ELP (English Language Programs) Center established in 2015, KU conducted a questionnaire on teaching classes in English in the first quarter, analyzed the result and organized the issues to further increase the number of classes offered in English.

At the same time, the Institute of Liberal Arts and Science Skills-Up Center provided a study session for quality assurance of lessons and Faculty Development Trainings to learn useful skills for conducting actual classes in English.

By these efforts, the proportion of classes offered in English in the undergraduate courses increased from 6.3% (in 2016) to 11.5%, and 25.0% (in 2016) to 33.8% in the graduate courses.

## ■ Featured initiatives based on the characteristics of the university

### ○ Strengthen Employment Support System for International Students to Japanese Companies

In a joint program with Shinshu University, KU was adopted for "Hokuriku-Shinshu Employment Program for International Students" and is promoting career development of international students.

This program is comprised of "Business Japanese Language Education," "Career Education," and "Collaborative Internship," and trains and produces highly-skilled vocational personnel who represent the image of international student talent required by companies.

## ■ Activities Unique to the University

### ○ "Global Week" Event by KU-SGU Student Staff

"Global Week - International Exchange Festival" was held in the week of June 26 to 30, 2017. This event aimed at expanding the view of students by taking part in international exchange experiences that can not be enjoyed in daily life, with the keywords such as "International Exchange," "Study Abroad" and "Discovery." This event was planned and implemented by "KU - SGU Student Staff" established in 2016 and they collaborated with many other student organizations and groups at KU in conducting various events, and more than 400 students participated.

### ○ Lectures by Celebrities Active in the World

KU held the "Kanazawa University Super Global Human Resource Development Special Lecture," inviting celebrities who has been abroad and has had cross-cultural experiences to make students of KU turn to the attention to overseas and internationalization .

In April 2017, Mr. Yasushi Akashi( former UN Administrator), Mrs. Naoko Sawamatsu (former professional tennis player) in June and Mr. Hiroto Ishida (former Science and Technology Secretary of the Science) in December gave lectures. In addition, in June 2017, a special lecture was given by Ms. Keisuke Honda of the Japan national football team and more than 600 students participated in the event.



## 6. FY2018 Progress

### ■ Common indicators and targets

#### Internationalization

##### ○ Strong Promotion of Sending Japanese Students Abroad

The number of students who went abroad and received credits increased to 631, the largest number ever, due to development of new study abroad programs incorporating the opinions of students and enhancement of scholarship including “Kanazawa University Study Abroad Scholarship” and JASSO Student Exchange Support Program which we had strategically obtained. Also, by continued support for TOBITATE! Young Ambassador Program such as interview practice by the President, 14 candidates were accepted to the ninth batch of the program in FY2018, which was the seventh largest number out of all universities.

##### ○ Promoting Internationalization by Expanding Overseas Liaison Offices

KU established overseas liaison offices in September 2018 in the University of Dusseldorf in Germany and Kazan Federal University in Russia, and in November, in the three campuses of Prince of Songkla University in Thailand. In each case, a joint symposium was organized at the time of office opening where researchers and graduate students interacted, and solidified the base to further strengthen the future network.

Moreover, there are enriched activities based on the existing liaison offices, including the joint symposium by SixERS and Thai Universities (August) at SixERS ASEAN Platform (established in June 2017) in which 18 KU faculty, staff and graduate students took part, and KU staff's participation in 3 study abroad fairs in China with KU Beijing Office (established in October 2016) as the base.



##### ○ Stronger and Deeper Network with Russia

The long-running network between KU and Russian universities are becoming stronger through the selection in the “Inter-University Exchange Project (Russia)” in FY2017. In FY2018, Saint Petersburg State University and Moscow State University became new partners, and KU held joint symposiums with Saint Petersburg State University, Kazan Federal University (twice, one time each at KFU and KU) and Saint Petersburg Medical University. Especially, the partnership with KFU has become much deeper through two-way executive visits including the President of the Republic of Tatarstan, where KFU is located, establishment of liaison offices on both campuses, and conclusion of a MoU for double-degree program.



##### ○ Support for International Students and Enriched Exchanges

KU provides support for international students at facilities including the “Global Communication Studio” located in the Central Library and Natural Science and Technology Library, where Learning Advisers give assistance in Japanese, International Student Learning Concierges respond in English or the students' native language, and faculty academic advisers offer comprehensive academic advising. In FY2018, this support has been enriched, with additional Learning Concierges appointed from more countries around the world, and improved hours of operation, leading to the increase of consultations to 165, more than double the previous FY. Also, casual opportunities for international students and Japanese students to get together, such as the “English Hour!” which is organized periodically in the “Global Communication Studio,” to accelerate the internationalization on campus.



#### University reform

##### ○ Formulation of the New YAMAZAKI Plan 2018

KU established the “University Reform Committee” and implements a governance system under the President's leadership that makes possible a speedy university-wide decision-making. Under this Committee, KU has drawn up the university reform plans, “YAMAZAKI Plan 2014” and “YAMAZAKI Plan 2016,” and has been promoting various reforms for the creation of world-class education and research outcomes. In order to address the demand for universities to respond to the changing society and to formulate an international educational and research base that leads the world and also contributes to regional creation, KU drafted the “New YAMAZAKI Plan 2018” in April 2018. In accordance with this plan, the university promotes further internationalization and heightened education and research through activities including the training of Kanazawa University global personnel and exceptional research developments such as the WPI.



##### ○ Reinforced System to Promote Internationalization through Reorganization of the Organization of Global Affairs

In April 2018, the Organization of Global Affairs, in charge of promoting internationalization of KU, was reorganized, and “International Collaboration and Strategy Division,” “Research Exchange Support and International Contribution Division” and “International Education and Research Division” were newly established in the Organization. This change made clear which sector is in charge of what project, and strengthened the cooperation between the Organization and other departments at KU. At the same time, the Global Affairs Support Office was reorganized into the International Affairs Department, and the new organization brought closer each sector of the Organization and the administrative office to effectively carry out their duties.

#### Educational reform

##### ○ Establishment of New Graduate School to Promote Transdisciplinary Education

In April 2018, the “Division of Transdisciplinary Sciences” was newly established in the “Graduate School of Frontier Science Initiative,” a joint graduate school with Japan Advanced Institute of Science and Technology, and 13 students enrolled (including 2 international students). This division focuses on “transdisciplinary science” that brings together multiple specialties, and aims to train personnel who can create cross-disciplinary innovation through domestic and overseas internships and lab rotations.

### ○ Promoting “Kanazawa University Brand” Personnel Training at Graduate Schools

KU implemented a transdisciplinary educational program, “Graduate School GS Program.” In this program, student approaches a problem through study abroad, overseas internship and field work, etc. and the curriculum is comprised of lab rotation in multiple disciplines that are necessary to solve the problem. In FY 2018, 90 students participated in the program, and promoted the transdisciplinary education by taking part in research activities in laboratories of various specialties.

### ○ Progress in Admissions Reforms to Obtain Students Who Match the Ideal Personnel of KUGS

In July 2018, KU established the “High School/University Connection Core Center” to look into senior high school/university connection from various angles, in preparation for the implementation of “KUGS Special Entrance Exam,” which trains the personnel who matches the ideals of KUGS through senior high school/university connection program, and “Chozen Special Entrance Exam,” designed to received students with a variety of unique talents. Also, “Chozen Literature Award” and “Math A-lympiad,” contests for senior high school students who are future pioneers, have been established as precursors to Chozen Special Entrance Exam. “Chozen Literature Award” targets students who practice their talents in the “power of words” day to day, and there were 9 winners out of 21 applications in story and poem categories. “Math A-lympiad” aims to challenge the world-wide problems in today’s society through mathematics, and 7 teams were awarded out of 47 participating teams from all over Japan. The two top teams competed in the “Math A-lympiad” World Championship which took place in the Netherlands in March 2019.



## ■ University’s own indicators and targets

### ○ Formulation of a World-Class Research Base

At the Nano Life Science Institute established in FY2017 after being selected for the WPI Project, notable researchers from all over the world come together to create a new field of study, “Nano-probe life science,” with the bio SPM (scanning probe microscope) technology, the world’s most advanced technology developed by KU, and supramolecular polymer technology at its core. Moreover, the “Bio AFM Summer School,” an opportunity for young researchers to observe the research samples using the AFM (Innovative atomic force microscope) at NanoLSI, is very popular in Japan and overseas, and there were 13 participants from 10 nations out of 23 total participants in FY2018. There is anticipation for further development as a world-class research base.

### ○ Promoting Active Learning

KU released internally the “Course Catalogue,” a record of active learning-style classes in 50 courses, to further promote active learning and support implementation of more such classes and improvement of class contents. Moreover, to support student engagement in learning, over 30 training seminars on active learning have been implemented university-wide and in departments, and 229 active learning advisers have been appointed to provide support in and outside of classrooms. The number of courses involving active learning has increased from 4,081 in FY2017 to 4,697 in FY2018, owing to these developments.

## ■ Featured initiatives based on the characteristics of the university

### ○ Promoting internationalization on campus through KU-SGU Student Staff

A student organization in cooperation with the SGU activities, “KU-SGU Student Staff,” is organizing various events to promote study abroad and international student exchanges. In FY2018, in order to promote daily interaction between the Japanese students and international students, the organization issued a badge for international exchanges which students can wear to express they wish to interact. Such activities organized by students are contributing to the internationalization of entire campus.



### ○ Further Enrichment of Support for International Students’ Employment in Japanese Companies

In FY2010, KU launched a Business Japanese course, and using this as a base, KU is jointly developing the Employment Promotion Program for International Students, a program selected in FY2017, with Shinshu University. The program provides further enriched employment support system such as e-learning materials, matching with companies, and expanded internship opportunities. As a result, in FY2018, all international students who earned credits in this program and wished to find employment in Japanese companies were able to receive unofficial position offers. The program will fixate the increasing international students to the region and surely spread internationalization throughout the region.

### ○ Expanding the Empowerment Program that Embodies the Ideals of KUGS

Based on the understanding that the “ability to co-exist with others” is essential to train the personal who are equipped with the 5 qualities of KUGS, vitality and human,” KU is beginning to outline the “Cooperative Hands-on Educational Program” which expands on the ideals of achievements such as “Community learning “Super” Experience Program.” The program has two categories, “Cooperative Volunteer Activity (Cooperative Hands-on Activity)” to interact with and provide support to others including regional residents and foreigners, and “Cooperative Hands-on Camp” designed to deepen understanding of others through the time spent together and cooperating to solve problems. Students participating in the program receive points according to the content of their activities, and those who receive 15 points or more are considered to have completed the Cooperative Hands-on Educational Program. KU will empower the human resilience that represents KUGS ideals and appeal the “Kanazawa University Brand” personnel internally and externally.

### ○ Strengthened Core Functions of Higher Education Research Network that Makes Use of Regional Uniqueness

KU has been developing a regional experience education for international students in Shiramine region of neighboring Hakusan City. Since FY2018, KU has been taking the central role in cooperation with the institutions in Russia and Belarus to develop educational programs for international students in the UNESCO geoparks of each country, financially supported by (FY2018) ODA for UNESCO Activities, MEXT, Japan. In February 2019, KU established an education and research base in Hakusan Shiramine area, “Kanazawa University Organization for Global Affairs SDGs Biosphere Reserves, Geoparks Research Center,” in cooperation with Hakusan City, Hakusan Shiramine Nature School and others, and will develop activities from there. KU will continue to make use of its unique education and research strengths and unique regional character to reinforce its function as the core of world’s higher education and research network.

