

Top Global University Project (Type B) Kanazawa University

1. Outline

【 Name of project 】

Developing Human Resources to Lead the Global Society and Establishing the Kanazawa University Brand by Thorough Internationalization

【 Future vision of the university planned in TGU project 】

As it aims to carry out reforms in accordance with its status as a research university dedicated to education, while opening up its doors to both local and global society and to serve as the stronghold of intellect in East Asia as called for in its university charter, Kanazawa University has been devoting all its energies toward educating human resources capable of thriving as key members of global society. In recent years, globalization has been accelerating in various fields and the roles expected of institutions of higher education have been increasing. In response to those demands, Kanazawa University has been carrying out reforms energetically. Triggered by our appointment to a Top Global University, Kanazawa University aims to accelerate these reforms and realize the following vision in 10 years by thorough university reforms and internationalization under the leadership of the President and to become a role model of university reforms.

1. Be a university that provides high-quality education on international standards based on the unique global standard for human resources training (KUGS: Kanazawa University "Global" Standard)
2. Be a university that leads the globalization of Japan by nurturing "Kanazawa University Brand" human resources who take active roles in the world
3. Be a university that is the core of the world's network of higher education and research in East Asia

【 Summary of Project 】

Kanazawa University aims to establish the Kanazawa University (KU) Brand by strongly promoting the reforms in education based on KUGS (Kanazawa University "Global" Standard) indicating the images of human resources we try to nurture, and the internationalization of the faculty and administrative staff. Also, we aim to establish "Kanazawa University Model" for training human resources in order to drive globalization in the Hokuriku region and to produce the human resources who can thrive as leaders in today's knowledge-based society. To achieve these objectives, we will accelerate the internationalization of the entire university as well as the university reforms necessary for internationalization based on the seven strategies on education, internationalization, and governance.

University Charter

To tackle reforms as "a research university dedicated to education, while opening up its doors to both local and global society"

To train human resources with a rich sense of humanity who are equipped with specialized knowledge, ability to search for problems, and a global point of view and ethic

Kanazawa University "Global" Standard 

The specific vision of human resources trained at KU in the ever-globalizing international society of the present, in order to manifest the basic educational goals set in the university charter

To train human resources equipped with the following abilities, physical strength, and human resilience, who can actively fulfill his/her duties as a member of the human race in the international society, and tackle the present problems fearlessly as the core leader of the society

1. Know one's own position
2. Know and train oneself
3. Express thoughts and values
4. Connect with the world
5. Tackle future problems

Be a university that provides high-quality education on international standards based on the unique global standard for human resources training (KUGS).

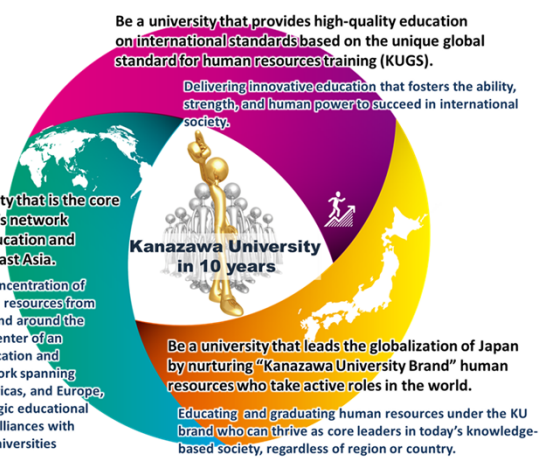
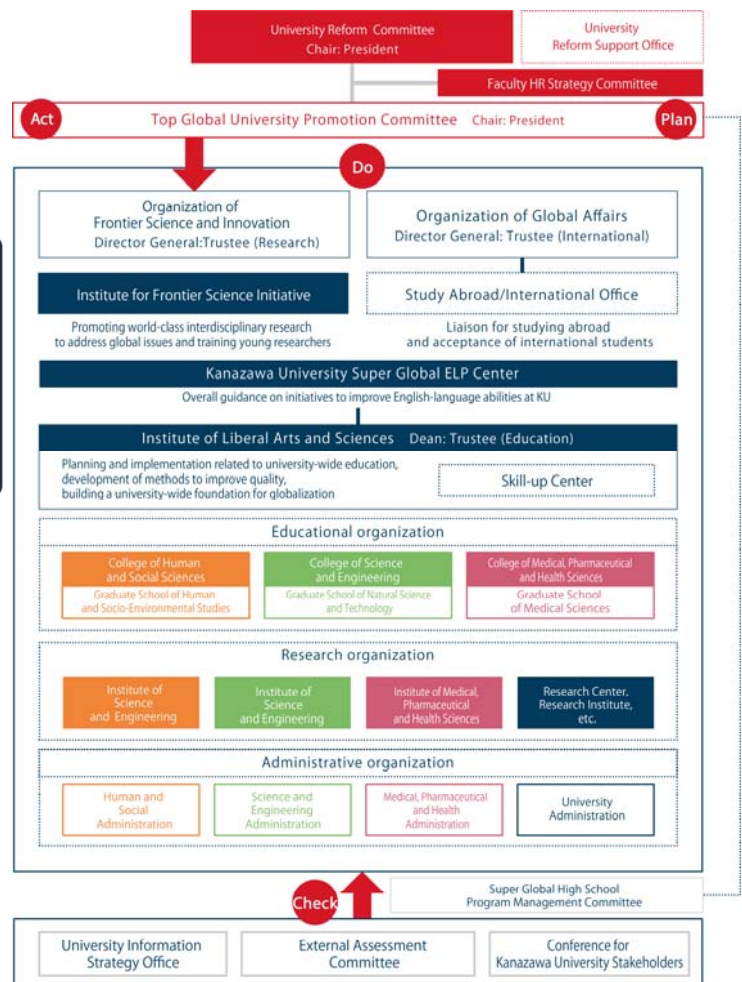
Delivering innovative education that fosters the ability, strength, and human power to succeed in international society.

Be a university that is the core of the world's network of higher education and research in East Asia.

Attracting a concentration of diverse human resources from across Japan and around the world as the center of an advanced education and research network spanning Asia, the Americas, and Europe, through strategic educational and research alliances with outstanding universities overseas.

Be a university that leads the globalization of Japan by nurturing "Kanazawa University Brand" human resources who take active roles in the world.

Educating and graduating human resources under the KU brand who can thrive as core leaders in today's knowledge-based society, regardless of region or country.

【Summary of the 10-year plan】 Seven Strategies

1. Realizing the KU Brand of Education Based on KUGS, Centered on the Institute of Liberal Arts and Sciences

- Establishing the Institute of Liberal Arts and Sciences which will be the core of internationalization of education and improving the students' communication skills in English
- Defining KUGS (Kanazawa University "Global" Standard) consistent across undergraduate and graduate courses and developing a new curriculum based on KUGS and adopting a quarter system accordingly

2. Accelerating Globalization of Undergraduate Education, with the School of International Studies Serving as a Model Program

- Applying the results of various international programs in the School of International Studies to other schools
- Adopting at least 1 international program in each course based on mutual recognition of units, developing joint degree programs integrating classes through joint recognition of units, and developing curricula to enable students to experience an international environment while in Japan

3. Setting up a Special Education/Research Zone to Enhance Research Capabilities, and Advancing Postgraduate Education and Research in Response to Globalization

- Setting up "Institute for Frontier Science Initiative (InFiniti)" to promote interdisciplinary research to address global challenges, as international joint research
- Choosing particularly capable graduate students and providing economic assistance and interdisciplinary education at InFiniti as well as sending them to outstanding research institutions abroad, to train them in the teaching methods needed for future educators as "High Ranking Teaching Assistants"

4. Enhancing International Education and Research Networks as well as Kanazawa University's Overseas Facilities

- Using a sabbatical research system to enhance ties with overseas research institutions on a one-to-one basis and develop future inter-organizational exchange
- Developing overseas facilities in America, Europe and Asia where KU staff will be on permanent assignment and developing these into overseas satellite campuses with KU faculty on permanent assignment in the future

5. Setting up the Kanazawa University Super Global ELP Center of the Tufts University English Language Programs and Enhancing English-Language Education

- Setting up the Kanazawa University Super Global ELP Center with the Tufts University English Language Programs, renowned for their high-quality English education, on the KU campus in order to improve the English ability of the students, faculty and administrative staff.
- Establishing syllabi, numbering systems, teaching methods, and evaluation methods in partnership with Tufts University and participating in Tufts University's international educational network

6. Driving Globalization in the Community Through the Hands-on Program Extending Beyond Community Boundaries and Partnership with the SGH Program

- Providing opportunities for all international students at KU to interact directly with the local community together with Japanese students
- Utilizing KU's network of affiliated schools from kindergarten through high school to educate faculty able to adapt to globalization in primary and secondary education
- Building a new model for linking high school with university to realize synergies in globalization with partnership with Kanazawa University Senior High School (chosen for the Super Global High School program)

7. Swift, Powerful Governance Reforms Under the Leadership of the University President

- Establishing "University Reform Promotion Committee" to serve as the headquarters for the entire university reforms and advancing strong governance reforms centered on university management and faculty HR systems, under the leadership of the President

【Featured initiatives (Internationalization, University reform, Education reform)】

○ In order to train human resources equipped with the 5 abilities indicated in KUGS, physical strength, and human resilience, we will launch "Empowerment Program" which will be a part of graduation requirements. The purpose of this program is for the students to recognize the importance of physical and mental strength, to accept diverse ways of thinking, and to become aware that they are members of the society. Students are expected to complete one of the following two programs in their 1st, 2nd or 3rd year. One is "Overseas Dispatch Program (Study Abroad Program)" and the other is "Hands-on Program Extending Beyond Community Boundaries (Local Activity Programs)" in which Japanese students and international students work together. Through activities on and outside of campus, the program aims to nurture human resilience to survive in the international society of the future.

○ Tufts University, one of our international partner institutions (University-Level), is an American private institution established in 1952 whose campus is located near Boston. It is renowned for their high-quality English Language Program as well as high-quality education such as small classes of less than 15 students and "active learning." As their sole partner in Japan, we operate the KU Super Global ELP Center in cooperation with Tufts University. The teachers dispatched from Tufts University hold classes for the faculty to improve their ability to lecture in English, classes of business English for the administrative staff, and classes for the students to prepare for their study abroad.

○ We organize "Conference for Kanazawa University Stakeholders" consisting of the stakeholders of the university. We report the university's status of education, research and governance at the conference and ask for their opinions and requests, which will be reflected to the university governance.

2. FY2014 Progress

■ Common indicators and targets

Internationalization

○ Kanazawa University Super Global ELP Center

In March 2015, “Kanazawa University Super Global ELP Center” was established inside Kakuma Guest House. This center was set up in cooperation with Tufts University, which is one of our partner institutions in America, and aims to improve the English ability of the students, faculty and administrative staff.

○ Global Communication Room at University Library

On March 27, 2015, the “Global Communication Room”, a new space for interaction between international students and Japanese students, opened in the Natural Sciences and Technology Library. This room, equipped with discussion and presentation equipment, was established to promote student interaction through “learning.”

○ Kanazawa University Ghent Office

On May 19, 2015, Kanazawa University Ghent Office was established in Ghent University, Belgium. Kanazawa University and Ghent University have concluded the agreement since July, 2009.

○ Kanazawa University Alumni Association in Thailand and China

In 2014, two Kanazawa University Alumni Associations abroad were established: Thailand in August and China in November. These follow the three Alumni Associations abroad which had been established before 2013: Boston, Vietnam and Myanmar.



〈Kanazawa University Ghent Office〉

○ Tobitate! Next Japan

Tobitate! Next Japan, a scholarship program by public-private partnership, began in 2014. For the first period, 4 Kanazawa University students out of 13 applicants were accepted to the program, and for the second period, 7 students out of 22 were accepted. The number of accepted students and applicants were the fourth largest of all national universities.

University reform

○ Top Global University Project Planning and Promotion Headquarters

On February 10, 2015, Top Global University Project Planning and Promotion Headquarters was established to promote Kanazawa University’s Top Global University project “Developing Human Resources to Lead the Global Society and Establishing the Kanazawa University Brand by Thorough Internationalization.”

○ Kanazawa University “SGU” Kick-Off Symposium

On March 27, 2015, Kanazawa University hosted Kanazawa University “SGU” Kick-Off Symposium “Challenges in Establishing Kanazawa University ‘Global’ Standard.” Approximately 230 persons from within and outside the university attended the event. After the opening address by the President and the presentation by Vice President introducing the SGU project, Mr. Yasushi Akashi, Former Deputy Secretary-General of the United Nations presented his keynote speech.



〈Kanazawa University “SGU” Kick-Off Symposium〉

○ Kanazawa University Top Global University Information Session for Faculty and Staff

On June 4, 2015, “Kanazawa University Top Global University Information Session for Faculty and Staff” took place and more than 400 faculty and staff attended the event. The President and Vice Presidents introduced the overview of the project, the initiatives and the vision in 10 years in the future.

Education reform

○ Super Global English Language Program for students

In April 2015, Super Global English Language Program for students started at the Kanazawa University Super Global ELP Center. This program consists of classes of small number of students by the academic staff dispatched from Tufts University, which aims to improve the students’ English ability to study abroad.

○ English Learning Adviser

In April 2015, the English Learning Adviser System was implemented to improve the students’ English skills. The adviser is in charge of counseling with the students, supporting their English learning via e-learning and holding various classes such as TOEIC preparation class.

○ English Proficiency Test For Entrance Exam

In the entrance exam for 2015 fiscal year, the School of International Studies accepted the score of English Proficiency Test such as TOEIC and TOEFL. The score higher than the designated score was regarded as full marks of English subject in National Center Test for University Admissions.

■ University's own indicators and targets

○ Conferment Ceremony for Kanazawa University Collaborative Professor

On March 22, 2015, the Conferment Ceremony for Kanazawa University Collaborative Professor took place and three newly appointed collaborative professors were handed the conferment certificate. They are expected to help promote international exchange activities, recruit students, and follow up on exchange students in their destination countries.



〈Conferment Ceremony for Collaborative Professor〉

○ English Language Program for Faculty

In March 2015, English Language Program for Faculty (trial) started at the Kanazawa University Super Global ELP Center. 22 participants attended onsite courses in March and are taking online courses during the semester.

○ Sabbatical Leave

In 2014, 6 faculty members took sabbatical leave and started their research abroad. In 2015, another 6 are going to research abroad and more faculty members are expected to take sabbatical leave in the future.

■ Featured initiatives based on the characteristics of the university

○ Institute for Frontier Science Initiative (InFiniti)

On April 1, 2015, Institute for Frontier Science Initiative (InFiniti) was established to promote interdisciplinary research to address global challenges as international joint research and to provide graduate students interdisciplinary education.

○ Empowerment Programs

As a part of Empowerment Programs, "Camp in Noto with President" took place in August, 2014, and "Camp in Gokayama with President" in February, 2015. 66 students in total joined the events. Empowerment Programs were implemented to train human resources equipped with the 5 abilities indicated in KUGS, physical strength and human resilience.



〈Camp in Gokayama with President〉

○ Faculty Development Programs about Classes Taught in English and Undergraduate Courses Entirely Taught in English

In March 2014, faculty development programs took place inviting lecturers from Akita International University and Tokyo Metropolitan University. The participants shared ideas about how to build and manage classes taught in English and undergraduate courses entirely taught in English.

■ Free description

○ Residence for Japanese and International Students

Kanazawa University will construct student residences where Japanese students and international students live together. Kanazawa University Student/International Student Dormitory "SAKIGAKE I," which accommodates 104 students, was completed in October, 2014 and "SAKIGAKE II," which accommodates 200 students will be completed in 2016. In the future, three student residences for Japanese students located in the city center will be relocated to Kakuma Campus as a residence for both Japanese and international students which accommodates about 800 students.



○ Kanazawa City, a Mixture of History, Culture and Modernity

Kanazawa University is located in Kanazawa City, which is situated on the Sea of Japan side in the middle of the Japanese archipelago. In March 2015, Hokuriku Shinkansen opened and now it takes only two and a half hours from Tokyo to Kanazawa. While the city is one of the largest cities on the Sea of Japan, its population is moderate 450,000 approx., and the city still preserves the taste of Edo era as well as various traditional cultures.

○ Kakuma Campus

Kakuma Campus, the main campus of Kanazawa University, is 43 times as large as Tokyo Dome with the total area of 2,000,000m². Being surrounded by abundant nature, the campus provides the ideal environment for students to study. The campus is handy for shopping and other activities, as it takes only 5 minutes by car to the nearest shopping area and 15 minutes to the city center. Also, both swimming beaches and ski areas can be reached within 2 hours by car.



〈 Student/International Student Dormitory "SAKIGAKE I" 〉



〈 Kakuma Campus, Kanazawa City and the Sea of Japan 〉

3. FY2015 Progress

■ Common indicators and targets

Internationalization

○ New Programs to Encourage Study Abroad

Having developed new study abroad programs, the number of students who studied abroad nearly doubled (+114 students) from FY2014 to 248 students in FY2015. We are now able to send more than 500 students abroad in FY2016 through the existing and new programs. In April 2016, “Study Abroad Office” was established in order to provide comprehensive and integrated support to send our students abroad smoothly.



○ Globalization of University Libraries

In March 2016, “Global Communication Studio/Corner” opened in the 3 KU libraries to facilitate communication between international students and Japanese students. In the Studios, graduate students appointed as “Learning Concierge for International Students (LeCIS)” provide learning support for international students, and help Japanese students to improve their foreign language skills.



○ Enhancement of Support for International Students

Since October 2015, a full-time counselor has been providing counseling to international students in English. Also, “International Exchange Advisor” system was implemented to officially appoint the local residents who had been voluntarily supporting our international students as advisors of KU. These people have contributed to enhancement of support for international students especially in their daily life and mental well-being.

○ Enlargement of Overseas Alumni Association Network

In January 2016, “Kanazawa University Alumni Association in Indonesia” was established as the sixth Overseas Alumni Association, and more than 140 participants including the Indonesian alumni attended the Foundation Party. Since the First KU Overseas Alumni Association General Conference took place at KU in October 2015, the networks between KU and those associations as well as between the associations have been growing. These networks are expected to expand exchanges both in research and education.



University reform

○ Reinforcement of the Organization to Implement the Project

The President directly interviews candidates for Dean and discuss the university’s policy including the TGU project, so that the coordination to implement the project will be reinforced and the project will progress promptly and adequately.

○ Reflection of Stakeholders’ Opinions

In July 2015, “Conference for Kanazawa University Stakeholders” took place for the first time. There were reports on the recent status of the university’s research, education and management including the TGU project. Requests and opinions from the stakeholders will be reflected in the project.



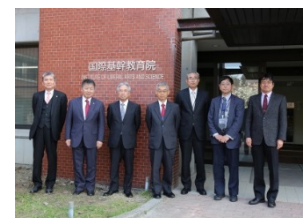
○ Appointment of Excellent Researchers through Implementation of New Personnel Systems

By FY2015, we have appointed 37 excellent researchers including 3 foreigners as “Research Professors,” using the new personnel systems such as Annual Salary implemented in January 2015 and Concurrent Appointment implemented in April 2015.

Education reform

○ Drastic Reforms in Education Centered on Institute of Liberal Arts and Science

In April 2016, “Institute of Liberal Arts and Science” was established as a new institute responsible for the new curriculum in general education based on “Kanazawa University ‘Global’ Standard (KUGS.)” Three hundred courses in general education have been reorganized into 30 GS General Education Course, so that all students can acquire knowledge and skills expected of KU students.



○ Encouragement of Study Abroad via Quarter System

Kanazawa University has adopted the quarter system since FY2016. Each school will set a quarter without compulsory courses to encourage students to join short-term study abroad programs. Also, by taking advantage of quarter system, students will be able to study abroad for half/one year without extending their period of enrollment.

○ Enhancement of English-taught Courses Based on the Manifests

In FY2015, Trustee (Education and Student Affairs) clearly stated in the manifest for students as well as the manifest for faculty and staff why and how KU strives to increase the number of courses offered in English. By setting these manifests as the bases for enhancement of English-taught courses, the number of courses offered in English increased by 3.6 times (+422 courses) from FY2014 to 548 courses in FY2015.

■ University's own indicators and targets

○ Improvement of English Language Skills and Reinforcement of FD through Cooperation with Tufts University

"Kanazawa University Super Global ELP Center," established in April 2015 in cooperation with Tufts University (USA), offers English courses not only for students but also for faculty and staff. By FY2015, 97 faculty and staff members have attended the courses. In February 2016, Director and Associate Director of Tufts University's Center for the Enhancement of Learning and Teaching (CELТ) delivered lectures on their advanced and renowned programs for faculty development.



○ Development of Overseas Facilities through Administrative Staff Exchanges

In FY2015, we started a program for staff training, which sends administrative staff to selected partner institutions, and 2 staff members have been sent to Tufts University (USA) and 2 others have been sent to Ghent University (Belgium) for 8 days to 2 weeks. They provided information about KU, collected information on the partner institution, and engaged in student recruitment.



○ Training of "High Ranking Teaching Assistants" as Future Educators

In FY2015, 14 doctoral students were hired as "High Ranking Teaching Assistants" by the Institute for Frontier Science Initiative. High Ranking Teaching Assistants receive training on teaching method at the Skill-up Center and assist professors, and they are expected to become educators at university in the future.

○ Reforms in Entrance Exam to Accept Talented Students

The general information on the new format of entrance exam, which will be implemented in FY2018, was released in May 2016. In this new system, KU accepts applicants in two broad categories: Humanities and Sciences, and the accepted students will take enough time to choose their major after their enrollment. KU expects to acquire students with more diverse interests through this new system. Also, the School of International Studies started to adopt the score of English Proficiency Test in the entrance exam for FY2015, and all the other Schools plan to follow in the entrance exam for FY2018.

■ Featured initiatives based on the characteristics of the university

○ Symposium for High School-University Joint Development of Global Human Resources

In March 2016, KU hosted the 2nd KU-GLOCS Symposium with the theme of high school-university joint development of global human resources in cooperation with 6 high schools in Ishikawa, most of which are selected as SGH and/or SSH, and approximately 280 people including 160 high school students attended the event. KU will continue to strengthen the ties with high schools, in cooperation with the KU "Global Science Campus" project, to acquire excellent students.



○ Promotion of TOBITATE! Young Ambassador Program

In order to increase the number of students studying abroad in TOBITATE! Young Ambassador Program, KU offers various supports for students such as briefing sessions, individual consultation by administrative staff in charge, and mock interviews with the President.



○ Enhancement of Community Learning "Super" Experience Program to Strengthen Human Resilience

Community Learning "Super" Experience Program, which started as one of the Empowerment Programs in FY2014, became an official course of general education in FY2015. One hundred and twelve students including 20 international students in total participated in the 4 sessions of the program. The program has received a lot of positive feedback from the participants, including comments on gaining valuable experiences such as experiencing local culture and staying with local people on homestay.



■ Free description

○ Promotion of the Project via Various Media

In addition to the KU TGU project Website, we started to issue a monthly newsletter called "KU-SGU Newsletter" in 2015 to inform our initiatives for the TGU project briefly. Also, we launched the Facebook page for the project to provide information on TGU-related events and reports from the staff members sent abroad for training in a friendly way.



○ New Promotional Video Showing the University's Globalization

In December 2015, a brand-new promotional video showing the globalization of Kanazawa University was released. This video was directed by Mr. Takeshi Maruyama, who has directed music videos of various popular music groups, and a lot of KU students including international students appeared in the video as extras. Beautiful footages shot on KU campus and various places in Kanazawa city, along with the delightful music, are woven into a video production like a short film.

