

Collaborators : The University of Kitakyushu, Nagasaki University

Participators : The University of Tokyo, Institute of Science Tokyo, Muroran Institute of Technology, Kyushu University, National Institute of Information and Communications Technology, Japan Aerospace Exploration Agency, University Putra Malaysia, King Mongkut's University of Technology North Bangkok, National Taiwan University of Science and Technology, City University of New York, Sapienza University of Rome, University of Lorraine

Summary



Vision

By promoting engineering research and personnel development, Kyushu Institute of Technology (Kyutech) exemplifies Center of Innovation University model that its bleeding-edge technologies and human resources make an impact on the World.



Strategies to Accomplish the Goal:

①

Management

1. Realization of University management that links short & long-term visions
2. Enhancing adaptability of management to catch up rapid industrial changes
3. Virtuous cycle of budget: from profit of social implementation, to fund profitable research

②

Environment

1. Enhancing function of Future Thinking and Exploration Center
2. Establishing facilities of “Idea Creation”, “Trial & Error”, and “Social Implementation”

③

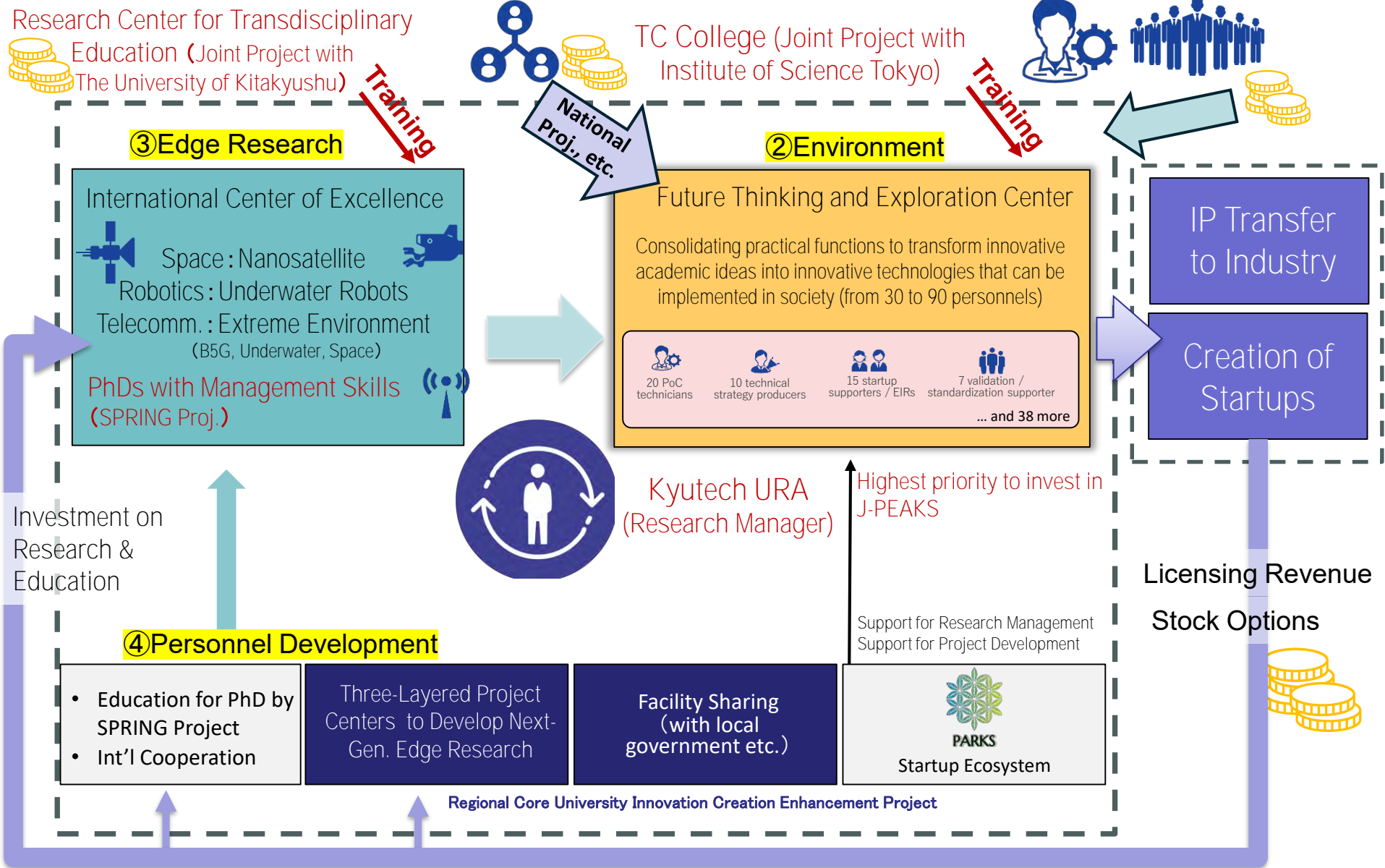
Edge Research

1. Establishing international bases of Space, Robotics, and Telecommunication
2. Promotion of Open Facility Center concept to overcome barrier among faculties

④

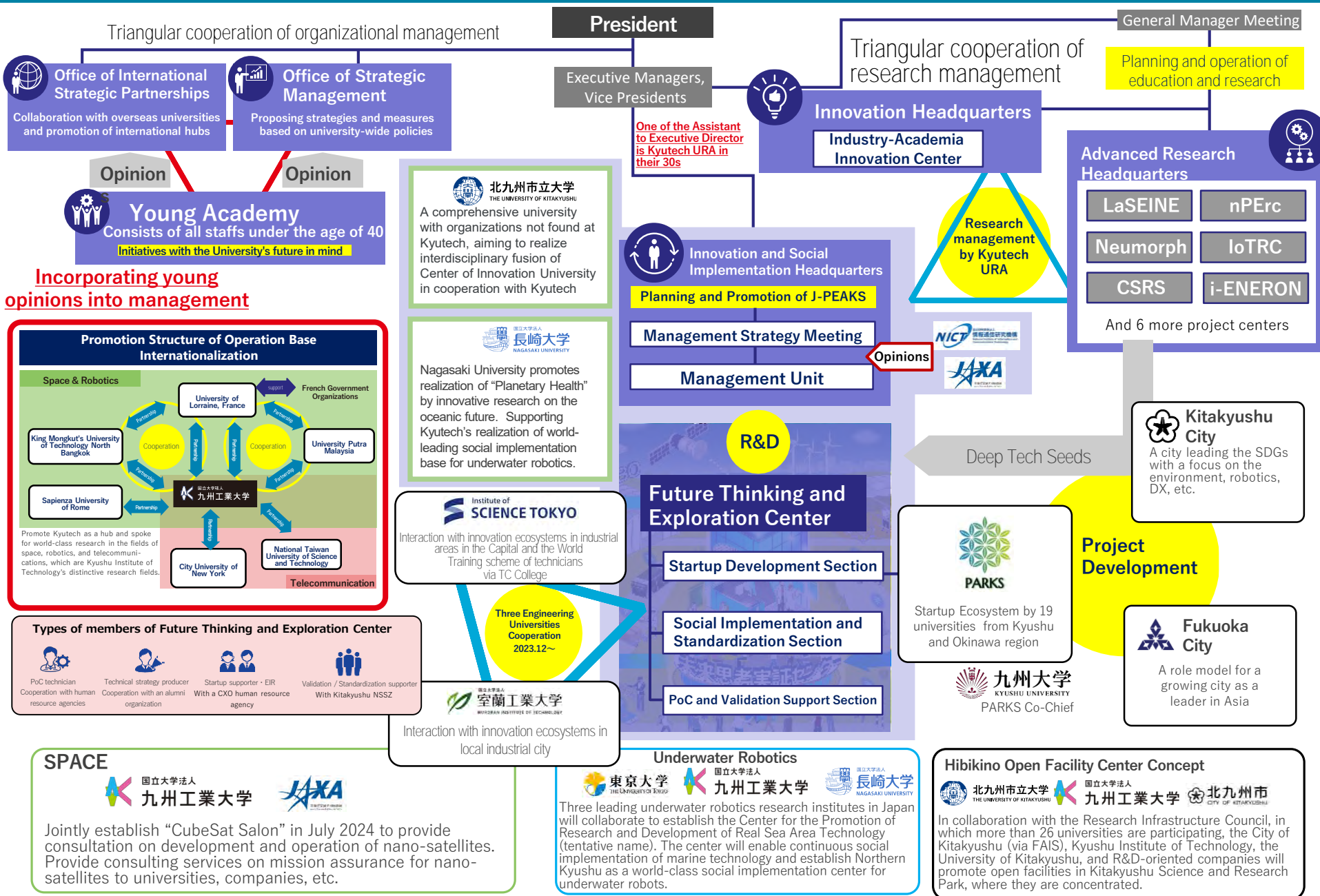
Personnel

1. Training researchers and PhDs in management & social implementation skills
2. Developing personnels for transition management, capable of social science & technology fusion



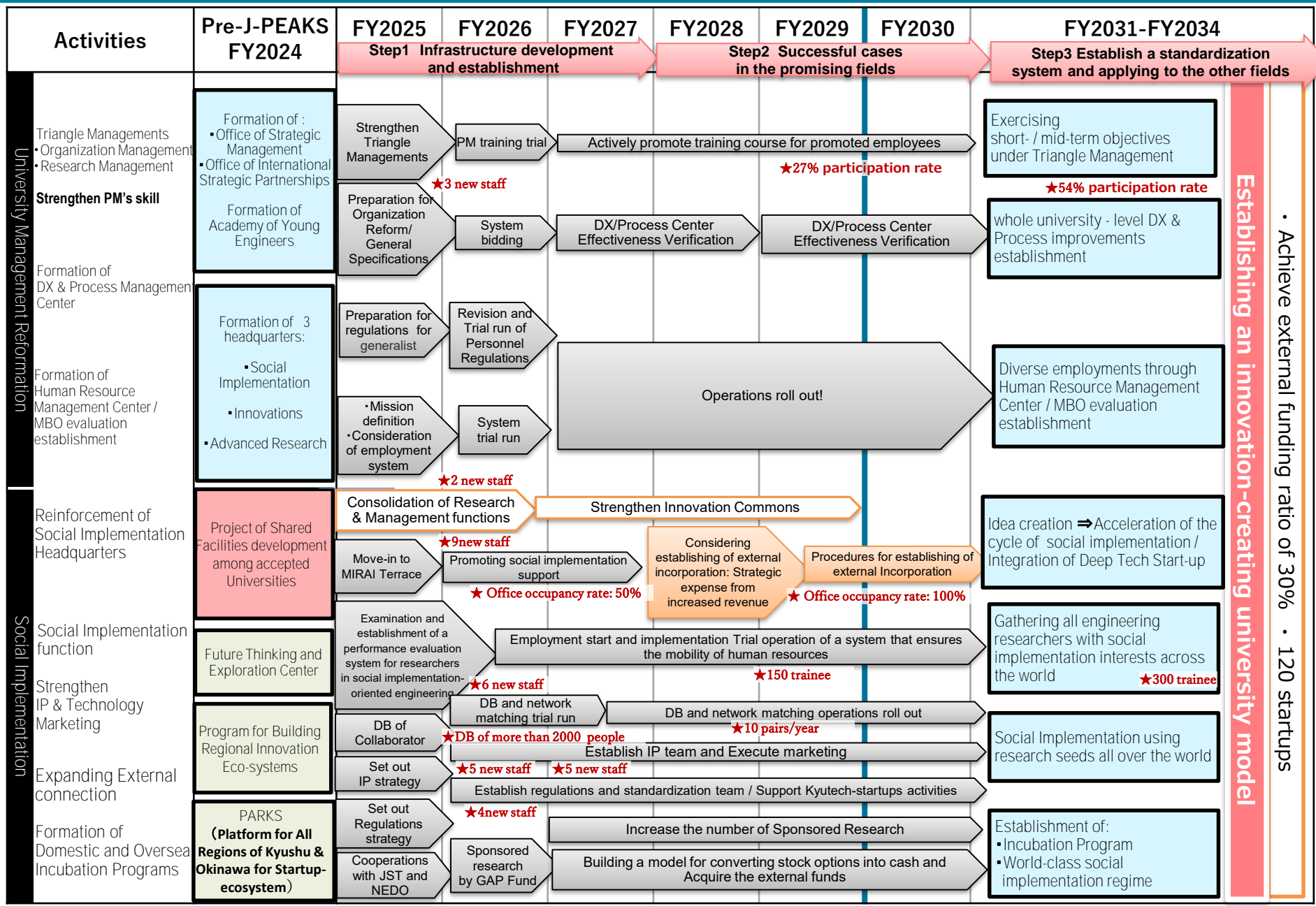
① Management Reform: Virtuous cycle of budget

Framework



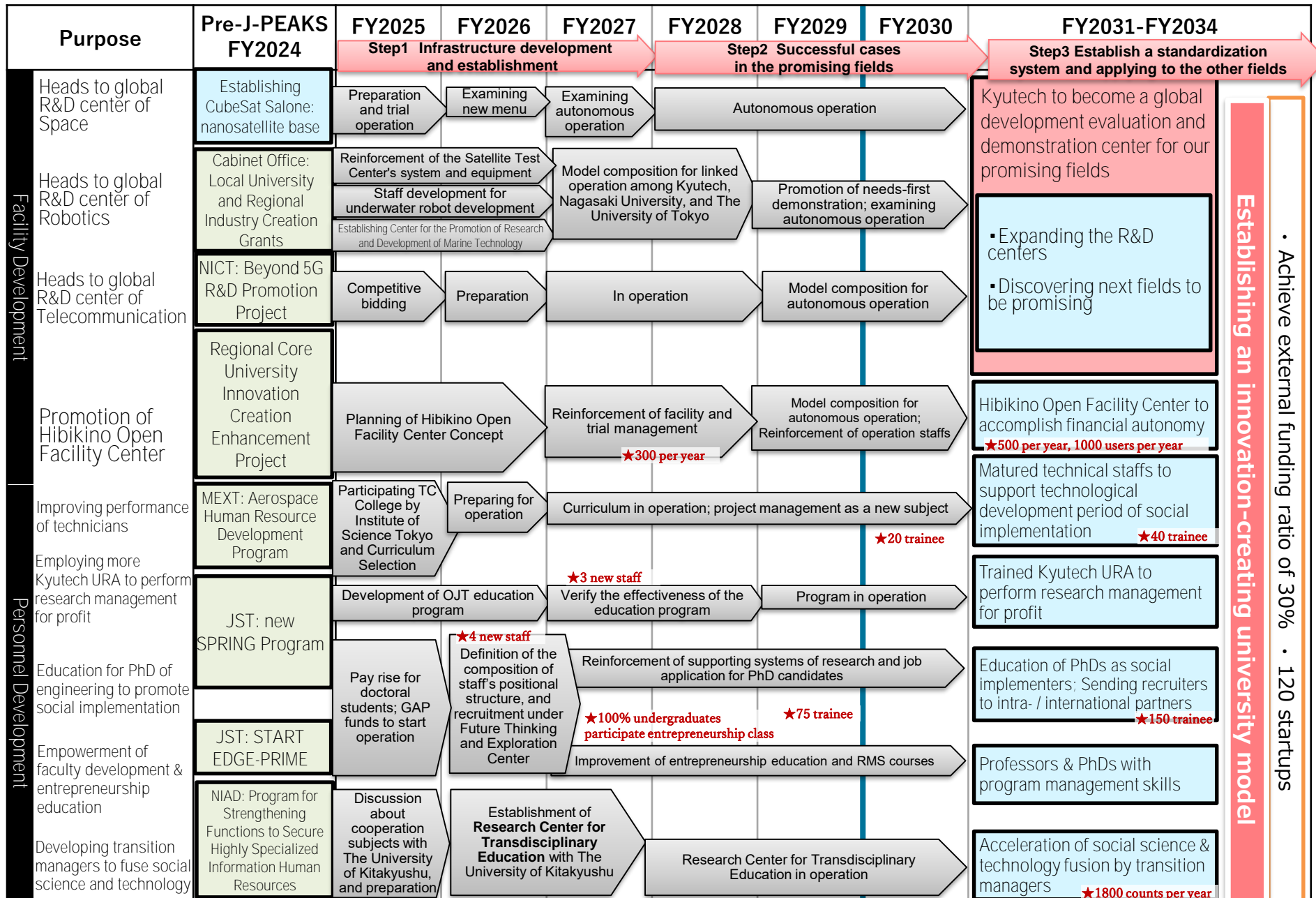
Program for Forming Japan's Peak Research Universities (J-PEAKS)

Timeline & Milestones



Establishing an innovation-creating university model

• Achieve external funding ratio of 30% • 120 startups



Establishing an innovation-creating university model

• Achieve external funding ratio of 30% • 120 startups