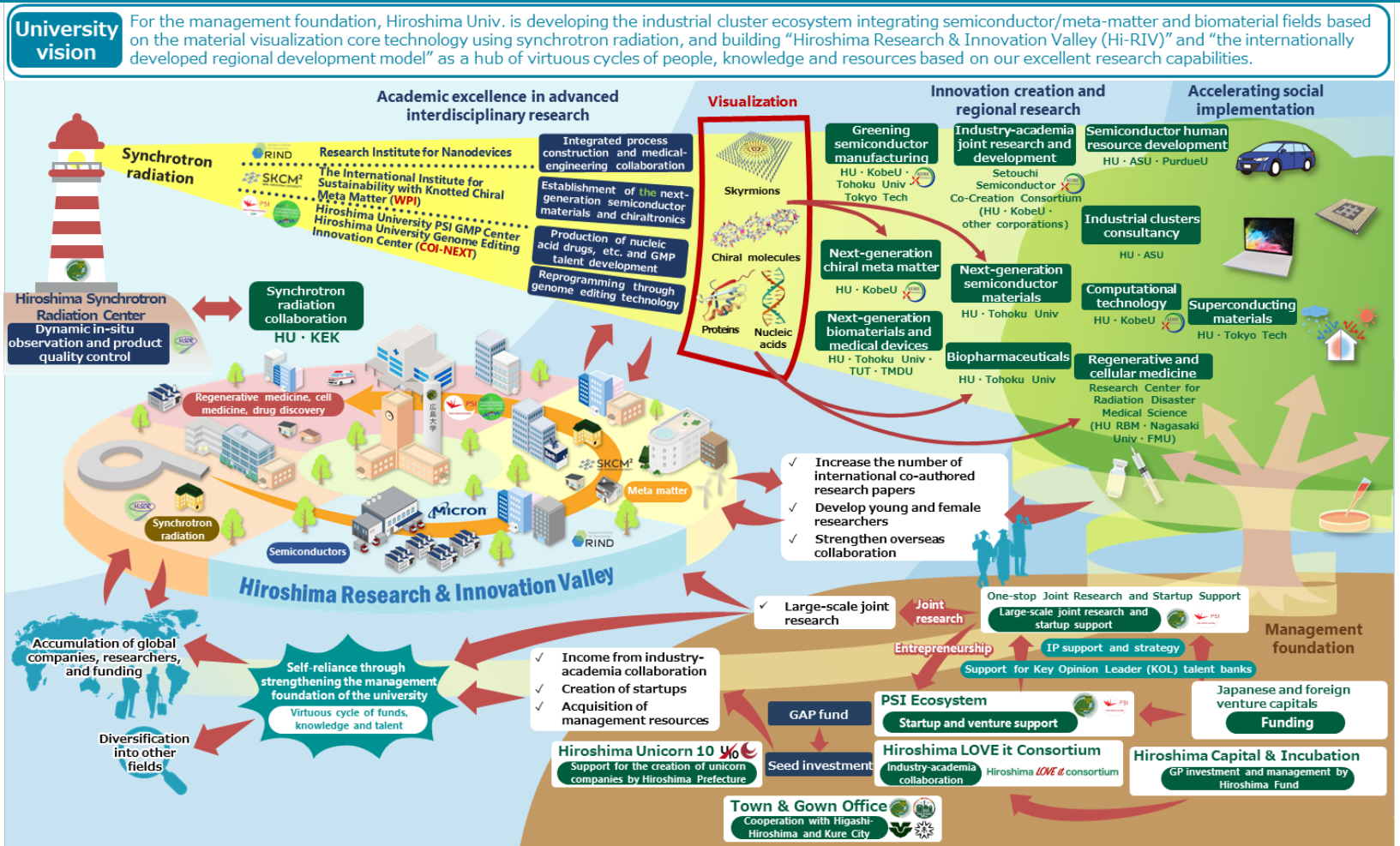


Hiroshima University (University Functions to be Enhanced: 1. Boost academic excellence in specific areas of the university's strength, 2. Generate innovation that can help solve global issues and advance societal reform, 3. Take a lead in resolving regional issues through collaboration with regional communities.)

Collaborator : Kobe University

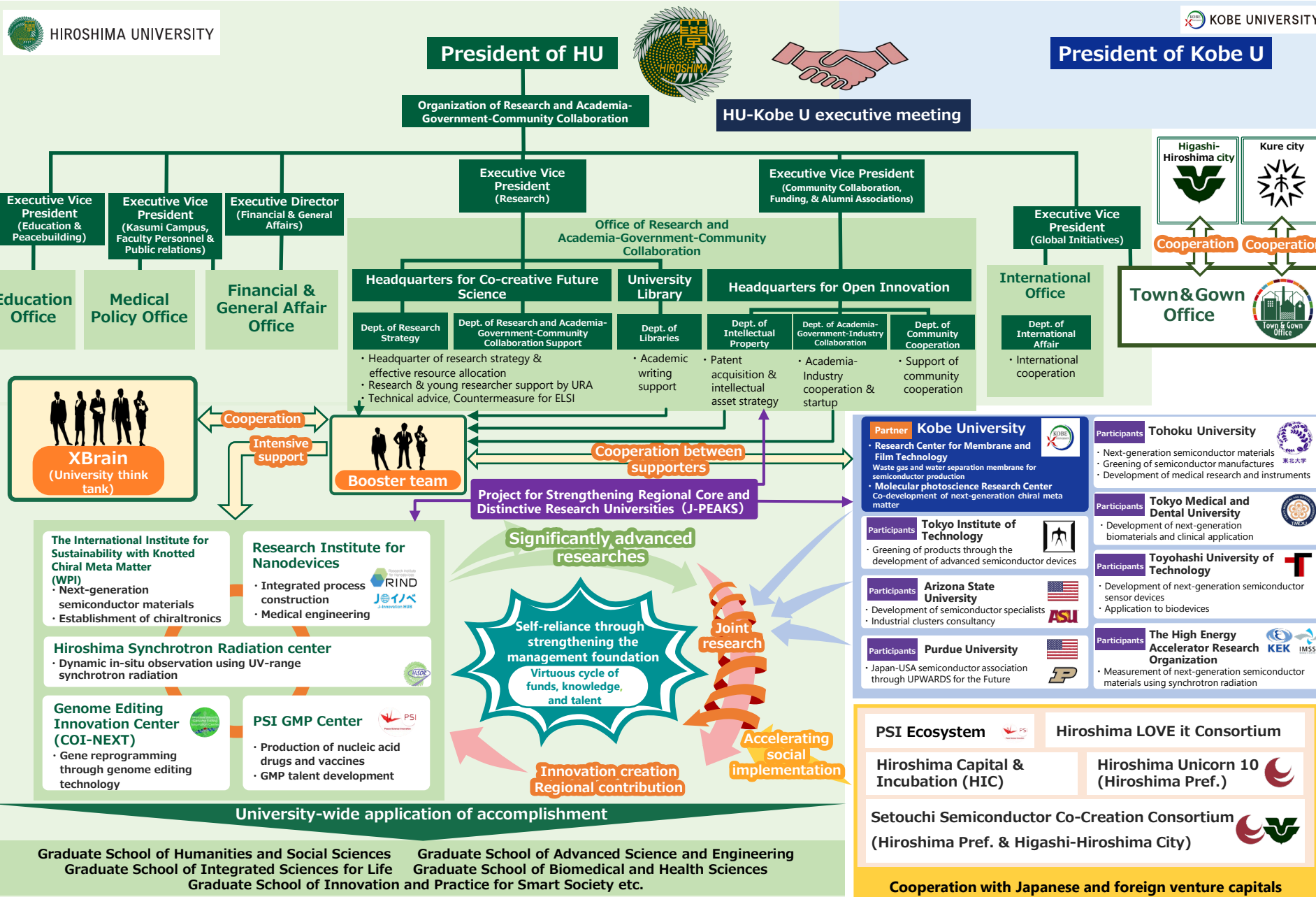
Participants : Tohoku University, Tokyo Medical and Dental University, Tokyo Institute of Technology, Toyohashi University of Technology, the High Energy Accelerator Research Organization (KEK), Arizona State University, and Purdue University.

Summary



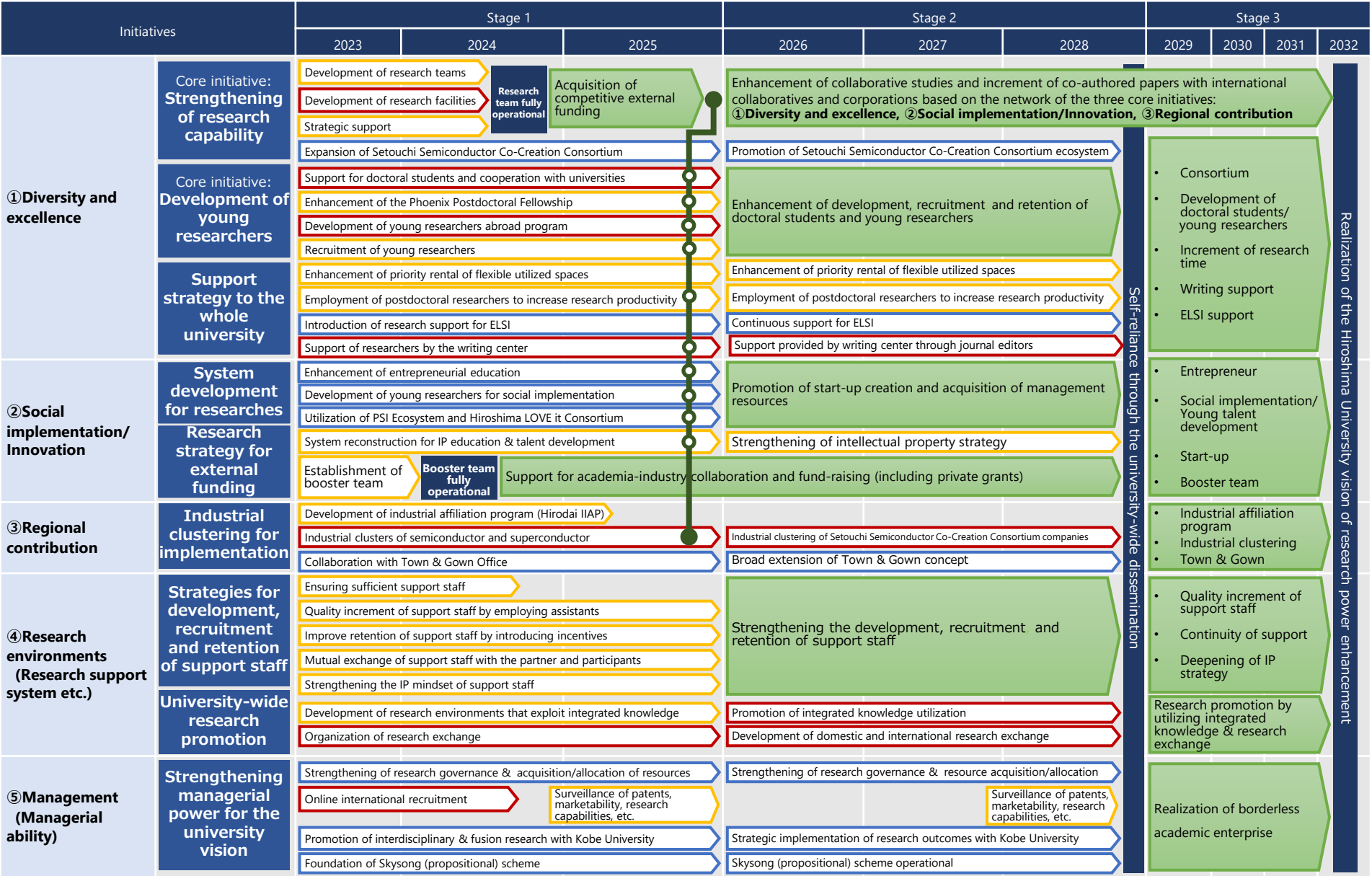
Program for Forming Japan's Peak Research Universities (J-PEAKS)

Framework



Timeline

(A. Management section: Light blue; B. Resource section: Yellow; C. Engagement section: Red; Integration section: Pale orange)



Realization of the Hiroshima University vision of research power enhancement