

## Nobel Prize Dialogue Tokyo 2017 Panellists

---



**Susumu Tonegawa**

Nobel Laureate in Physiology or Medicine 1987

Director, RIKEN Brain Science Institute

---



**George F. Smoot**

Nobel Laureate in Physics 2006

Professor, University of California, Berkeley

---



**Eric S. Maskin**

Laureate in Economic Sciences 2007

Professor, Harvard University

---



**Edvard I. Moser**

Nobel Laureate in Physiology or Medicine 2014

Professor, Norwegian University of Science and Technology

---



**Jean-Pierre Sauvage**

Nobel Laureate in Chemistry 2016

Emeritus Professor, University of Strasbourg

---



**Yuichiro Anzai**

President, Japan Society for the Promotion of Science

Chair, Strategic Council for AI Technology

---



**Chieko Asakawa**

IBM Fellow, IBM Research

---



**Kazuto Ataka**

Chief Strategy Officer (CSO), Yahoo Japan Corporation

---



**Tony Belpaeme**

Professor, Plymouth University

---



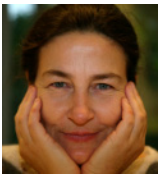
**Margaret A. Boden**

Research Professor of Cognitive Science, University of Sussex



**William J. Dally**

Chief Scientist, NVIDIA Corp.



**Nicole Dewandre**

Engineer & Philosopher, Joint Research Center, European Commission



**Shahram Ebadollahi**

Vice President, IBM Watson Health



**Norihiro Hagita**

Director, Intelligent Robotics and Communication Laboratories,  
Advanced Telecommunications Research Institute International (ATR)



**Mariko Hasegawa**

Executive Director & Professor,  
The Graduate University for the Advanced Studies



**Kazuo Iwano**

Chief Digital Officer, Mitsubishi Chemical Holdings Corporation



**Takeo Kanade**

U.A. and Helen Whitaker University Professor, Carnegie Mellon University



**Mitsuo Kawato**

Director & ATR Fellow, Brain Information Communication Research Laboratory  
Group, Advanced Telecommunications Research Institute International (ATR)

---



**Hiroaki Kitano**

President & CEO, Sony Computer Science Laboratories, Inc.

---



**Yasuo Kuniyoshi**

Professor & Director of Next Generation Artificial Intelligence Research Center (AI Center), The University of Tokyo

---



**Keith Marzullo**

Dean, College of Information Studies, University of Maryland  
Former Director, NITRD Program

---



**Noyuri Mima**

Former Deputy Director, National Museum of Emerging Science and Innovation  
Professor, Future University Hakodate

---



**Tom M. Mitchell**

E. Fredkin University Professor, Carnegie Mellon University

---



**Peter Norvig**

Director of Research, Google Inc.

---



**Frank A. Pasquale**

Professor of Law, University of Maryland

---



**Stuart J. Russell**

Professor of Computer Science, University of California, Berkeley

---



**Sadayuki Sakakibara**

Chairman, Japan Business Federation

---



**Shinsuke Shimojo**

Gertrude Baltimore Professor, California Institute of Technology

---



**Adam Smith**

Chief Scientific Officer, Nobel Media AB

---



**Sawako Takeuchi**

Senior Advisor, Ministry of Education, Culture, Sports, Science and Technology,  
Japan / Former President, National Center of Arts in Paris

---



**Hirotaka Tamura**

Fellow, Fujitsu Laboratories Ltd.

---



**Junichi Tsujii**

Director, Artificial Intelligence Research Center, National Institute of Advanced  
Industrial Science and Technology

---



**Takeshi Uchiyamada**

Chairman of the Board, Toyota Motor Corporation

---

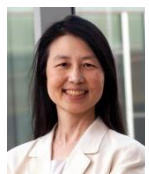


**Wolfgang Wahlster**

CEO & Scientific Director, German Research Center for Artificial Intelligence  
(DFKI) GmbH

Photo by Jim Rakete

---



**Jeannette M. Wing**

Corporate Vice President, Microsoft Research  
Consulting Professor of Computer Science, Carnegie Mellon University

---



**Nanrei Yokota**

Zen Master & Chief Abbot, The Engaku-ji School, Rinzai Zen Denomination

---