

SCIENCE DIALOGUE



Welcome JSPS Fellows!

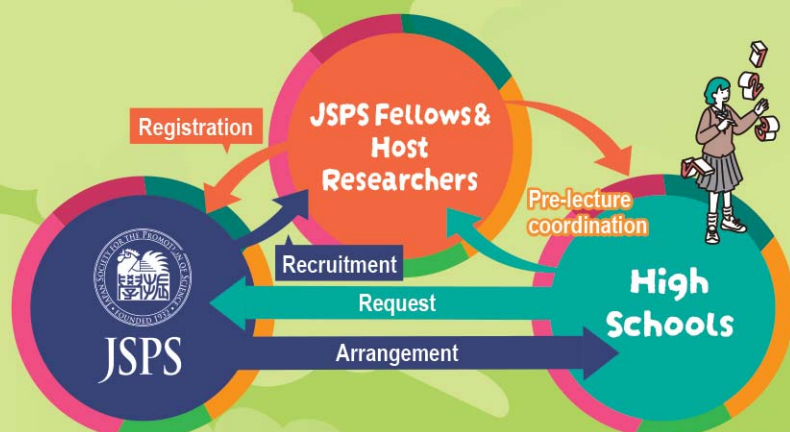
YOUNG INTERNATIONAL RESEARCHERS INTRODUCE JAPANESE STUDENTS
TO THE REALM OF SCIENCE

FY2026



What's the SCIENCE DIALOGUE??

The program offers JSPS Fellows the unique opportunities to volunteer to give lectures in English on their research work at high schools in the vicinity of their host institutes. The aim of the lectures is to stimulate the young students' interest in research and deepen their understanding of science from a global point of view through interacting with overseas Fellows. As for the Fellows, the participation in the program will be an enjoyable opportunity to communicate with the local community and strengthen their ties with Japan.



Comment From A Former Lecturer

I kindly recommend my junior fellows to participate in this science dialogue program. Initially, I was concerned about giving the lecture to students who speak different language. I thought it will be difficult to convey my research and cultural views for students. But I realized that was my misconception. Science is fun to talk to anyone without any barrier unless and until the receiver is interested. Through this program the fellow can definitely enjoy interacting with the young minds and it can create an opportunity to share cultural and scientific view.

(Extract from the report of a 2025 lecturer)



How to participate in the program?

JSPS accepts applications from Fellows throughout the year.
Please be sure to read the Guidelines on our website before application.

Science Dialogue Website [English]



You can see the details including the following materials.

Application Form Report Questionnaire



website <https://www.jsps.go.jp/english/e-sdialogue/>

Communication

JSPS provides the teacher in charge of the program at the participating school with the JSPS Fellow's contact information.

The teacher contacts the Fellow to draw up a plan together for the content of the lecture session.

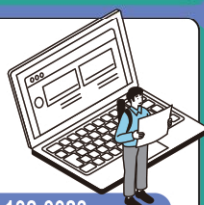


Contact us

Overseas Fellowship Division, International Program Department

Address 5-3-1, Kojimachi, Chiyoda-ku, Tokyo 102-0083

Email sdialogue@jps.go.jp



Travel expenses

For Fellows and Lecture Assistants, JSPS will cover their travel expenses from the host institution to the participating school in accordance with JSPS regulations.

