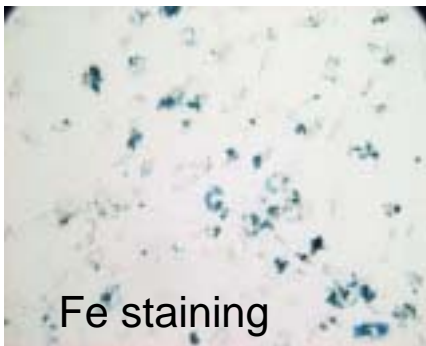


Cell Tracking *in vivo* towards Regenerative Medicine

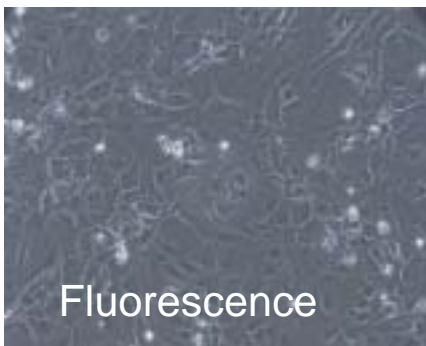


Toshiro Inubushi
(Representative)

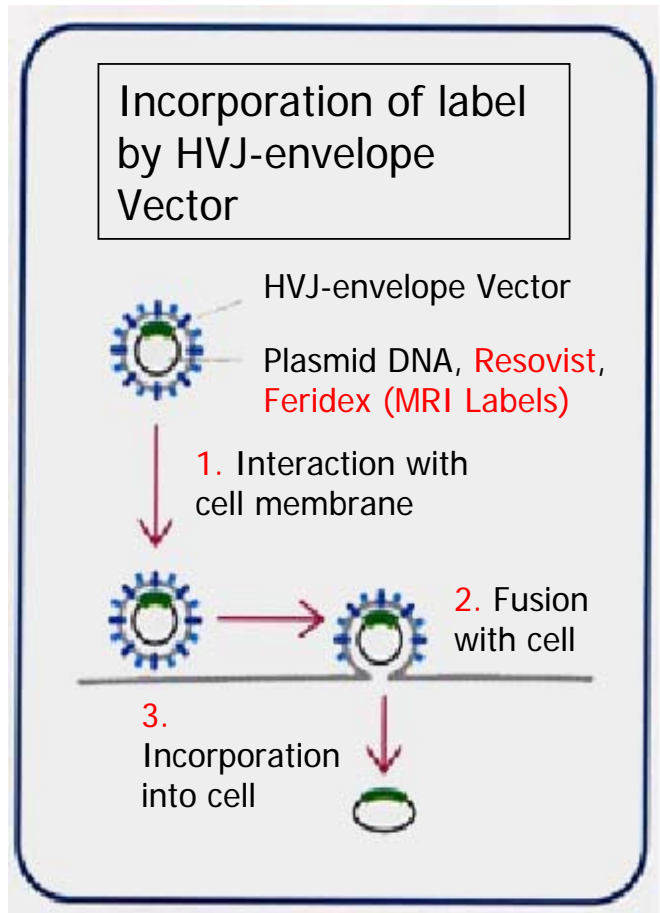
Iron-GFP Doubly
Labeled Stem Cells



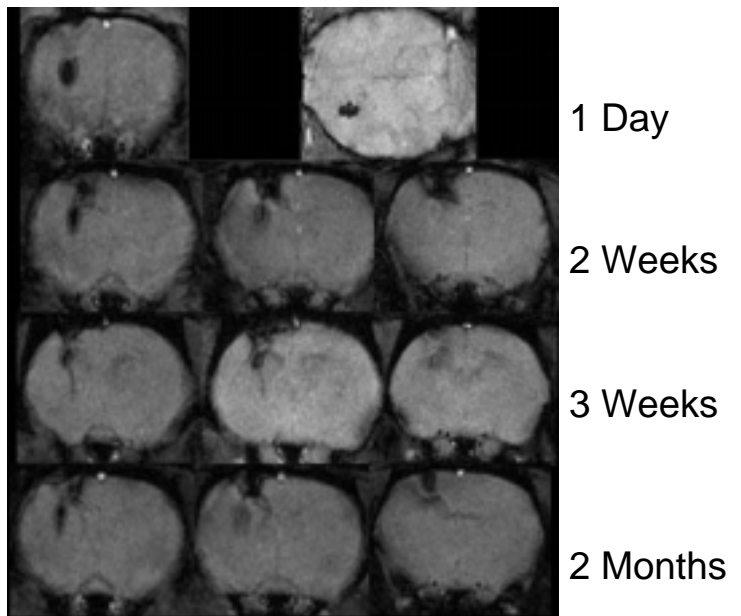
Fe staining



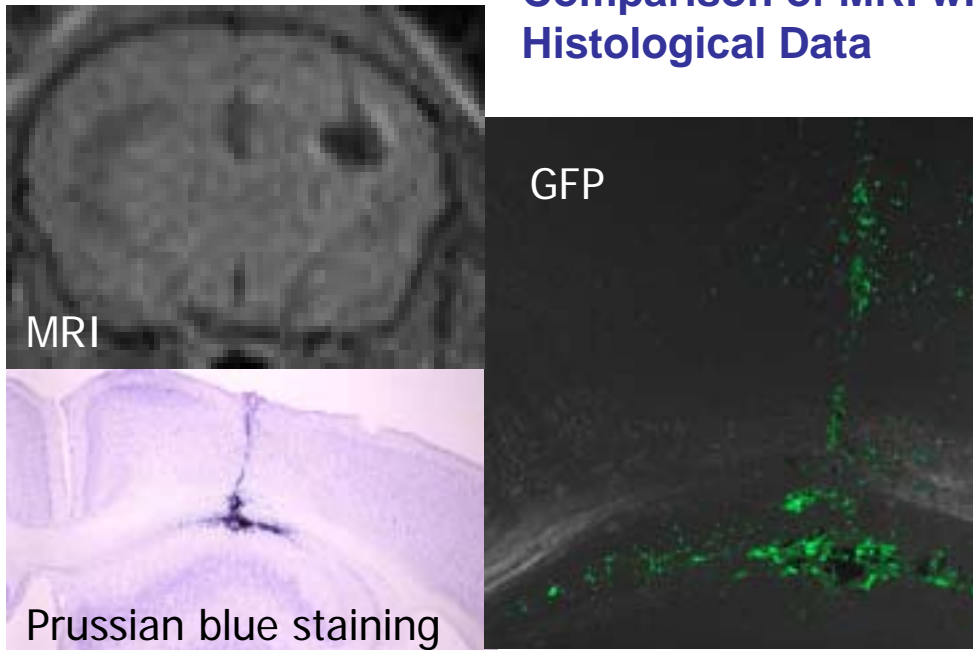
Fluorescence



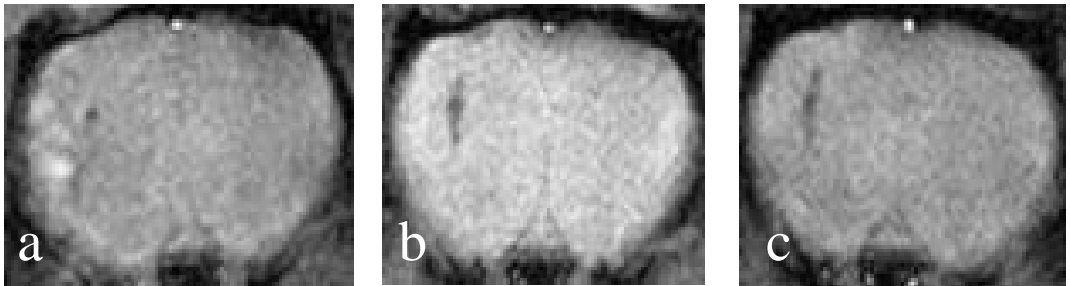
Tracking of Stem Cells in Rat Brain



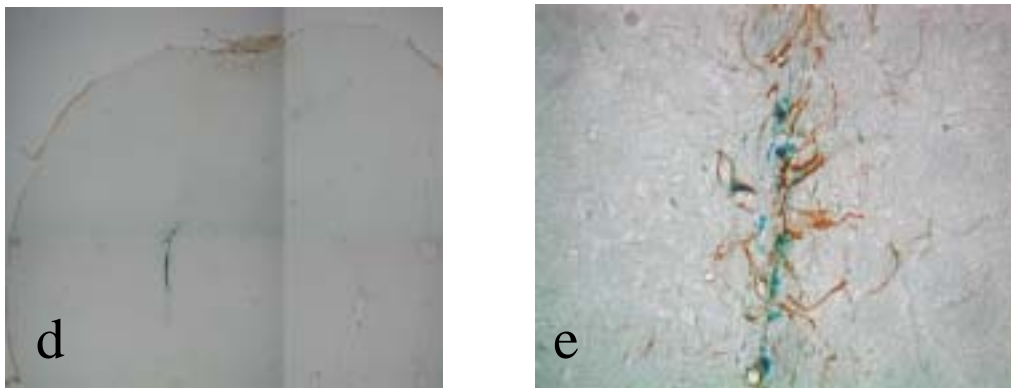
Comparison of MRI with Histological Data



Stem Cell Tracking by MRI at 2T



MRIs on a: day 1; b: week 1; c: week 2.



d, e: Immunostaining for Nestin (brown) and with Prussian blue for ferric iron.