

# Outline of JSPS Core-to-Core Program, FY2018

## I. Program Objective

The Core-to-Core Program is comprised of the two components: (1) Advanced Research Networks and (2) Asia-Africa Science Platforms. This program is designed to create world-class research hubs in research fields considered to be cutting-edge and internationally important in Japan or high-potential research hubs in fields of special importance or significance to Asia and/or Africa and of high priority in Japan. These hubs will be built and operated through sustainable collaborative relations established among research/education institutions in Japan and around the world. While advancing research in the fields of these core research hubs, the Core-to-Core Program will also concentrate on fostering the next generations of trailblazing young researchers.

Core institutions in Japan and in counterpart countries conduct collaborations. They take the form of joint research projects, seminars, and researcher exchanges, which are to be organized and carried out effectively under the program. Core institutions are expected to continue operation as a research hub after funding under this program has ended.

## II. Program Components

- A. Advanced Research Networks
- B. Asia-Africa Science Platforms

## III. Applicant Eligibility

- (1) Japanese universities and research institutions eligible to apply for this program as a core institution are those specified in Article 2 of the Procedure for the Handling of Grants-in-Aid for Scientific Research (*Kakenhi*), issued by the Ministry of Education, Culture, Sports, Science and Technology (MEXT). To qualify, an institution or department must possess sufficient research funding, equipment/facilities and human resources, and be capable of programmatically implementing the overall research project as its core institution.

Institutions specified as eligible in the Procedure for the Handling of Grants-in-Aid for Scientific Research:

- 1) Universities and inter-university research institutions
- 2) MEXT-affiliated institutions engaged in research

3) Colleges of technology

4) Institutions designated by the Minister of MEXT

- (2) Each core university, which plays a leading role in conducting research exchange in this project, must have one project coordinator. He/she must be a full-time researcher or a researcher positioned as full time at the core university. However, a researcher who is not employed full-time may qualify as a coordinator if his/her affiliated core university guarantees the implementation of the project including the provision of an appropriate research environment (e.g. laboratory, equipment, personnel). In any case, the coordinator must be eligible to receive Grants-in-Aid for Scientific Research (Kakenhi). As the coordinator plays a vital role in carrying out the project plan, care should be taken not to appoint a person to the position who might lose his/her coordinator eligibility, or otherwise be unable to perform the coordinator's duties during the period of the project's implementation.

#### IV. Period for Application acceptance

Wednesday, 6 September to Wednesday 4, October 2017

(Please note that applicants' affiliated institutions may set earlier deadlines.)

#### V. Program Details

##### A. Advanced Research Networks

##### 1. Targeted Research Fields

Research topics considered to be cutting-edge and internationally important in Japan. (All fields of the humanities, social sciences and natural sciences.)

##### 2. Eligible Countries

At least two or more countries that have diplomatic relations with Japan. (JSPS treats Taiwan and Palestine in this manner.)

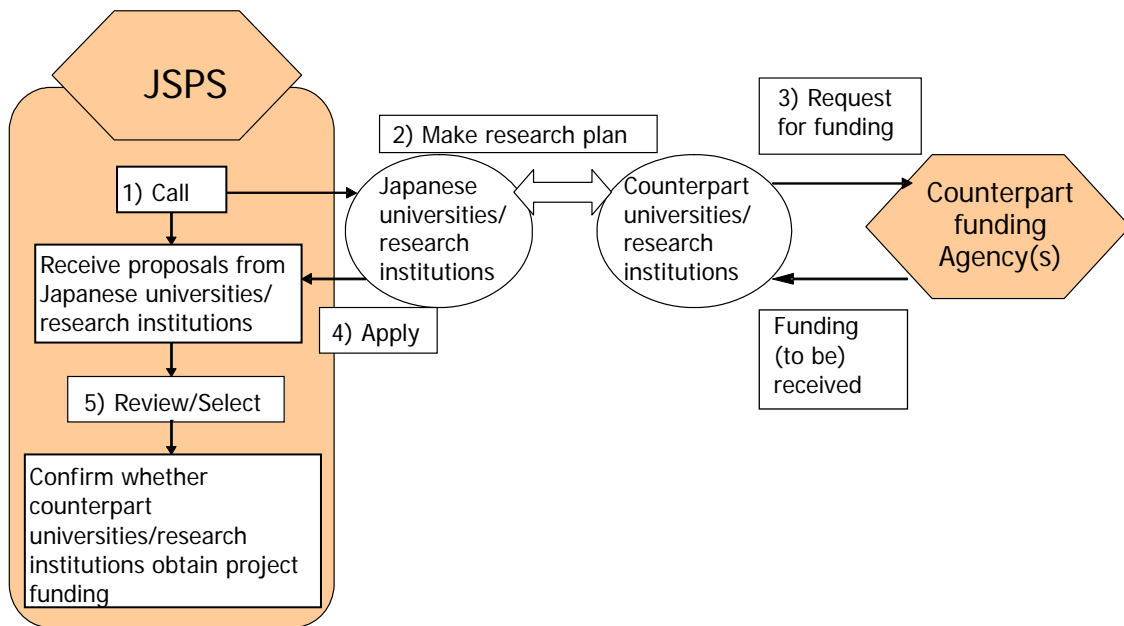
### 3. Implementation Method

- (1) The project coordinator's institution or department sets up the implementation framework and carries out the project.
- (2) JSPS provides financial support for carrying out project-related joint research, scientific meetings and researcher exchanges by Japanese core institutions. Counterpart core institutions are to obtain project funding from science-promotion agencies or other funding organizations in their respective countries.
- (3) JSPS issues a call for proposals to Japanese universities/research institutions, and conducts reviews and selections. JSPS neither seeks nor conducts negotiations with science-promotion agencies.

The procedure is as follows:

- ① JSPS issues a call for proposals to Japanese universities/research institutions.
- ② Those universities/research institutions interested in conducting exchanges with counterparts in foreign countries select counterpart universities/research institutions and devise research plans.
- ③ The "counterpart core institutions" negotiate with or submit funding applications to funding agencies in their respective countries in order to obtain project funding (JSPS does not ask its overseas counterpart agencies to make proposal calls under the title "Core-to-Core Program." As long as counterpart core institutions are able to obtain project funding under any system in the necessary amount to conduct the research exchange under the project, JSPS consider them eligible to participate in this program.)
- ④ Japanese universities/research institutions submit applications to JSPS after the counterpart core institutions confirm that they have either acquired or been selected for project funding or been promised such funding. (However, an application may be submitted while a counterparts' funding request is being processed. If the funding is not obtained, the application will be cancelled.)
- ⑤ JSPS reviews proposals received and selects projects.

## Application and Selection Process



### 4. Project Period

From April 2018 through March 2023 (under the FY2018 call)

### 5. Project Funding

- (1) JSPS provides Japanese core institutions with the following funding:  
Up to ¥18 million per fiscal year
- (2) JSPS will cover the following major expenses of the Japanese core institutions:
  - i. International travel expenses
  - ii. Domestic travel expenses
  - iii. Cost of expendable supplies
  - iv. Honorariums
  - v. Others

### 6. Number of Projects Slated to Start in FY2018

About 8 projects

## 7. Screening Criteria in JSPS Reviews

Applications are screened from the following perspectives.

- ① Scientific/academic merit
  - Degree to which the proposed project is recognized as being leading-edge and unique in the subject research field.
  - Whether there is a clear need and value to implementing the project with the proposed counterpart institutions.
  - Degree to which the collaboration between the core institutions in Japan and the counterpart countries can be expected to yield results of sufficiently high academic value to contribute to the establishment of a world-class research hub.
  - Degree to which the project will build upon and expand the core institutions' past international research activities and accomplishments.
- ② Fostering young researchers
  - Whether the project includes a program for honing the skills and expertise of young researchers.
- ③ Creating implementation framework on Japan side
  - On the Japan side, plans to build a world-class research hub should be strategically placed within the core institution's overall education and research program.
  - Japanese core institutions should have in place on an institutional level a system for ensuring the ongoing implementation of the proposed project. They should also have an effective scheme for mobilizing cooperation from researchers of other institutions in Japan.
  - The project should be capable of enlisting the participation of an adequate number of researchers in Japan who are qualified to build a world-class research hub.
  - The project should be capable of continuing its operation as a world-class research hub after funding under this program has ended.
- ④ Network building with counterpart core institutions
  - The match-up of Japanese and counterpart institutions under the project should be one that holds good promise for sustained research collaboration.
  - A clear-cut framework for implementing the project, such as a signed cooperative agreement, should be established between the core institutions.
  - The project should have a clear vision of how to build a world-class

research hub, and be expected to contribute to the continuous development of collaboration between the core institutions in the future.

- The counterpart core institutions must, on an institutional level, have one coordinator and an adequate number of researchers in place to ensure the ongoing implementation of the proposed project. The participation of an adequate number of researchers is essential qualification.

⑤ Appropriateness of research plan

-Whether advanced consultation has clearly been carried out with the counterpart country's coordinator and research institution, and whether the plan is sufficiently concrete to achieve the project objectives and its contents are highly attainable.

-Whether the research plan is practicable in terms of its fiscal and operational scope.

- Whether pertinent information has been obtained on the counterpart country's prospects to secure matching funds.

In selecting projects, an attempt is made to strike a balance among counterpart countries.

## 8. Points to Keep in Mind

(1) JSPS supports multilateral collaboration between Japan and eligible countries.

(2) This program supports projects of up to five years carried out through networks of collaborating organizations and researchers in hubs formed between core institutions in Japan and other counterpart countries. Throughout projects under "Advanced Research Networks," counterpart core institutions are to obtain project funding equivalent to JSPS from science-promotion agencies or other funding organizations in their respective countries. Each counterpart institutions must supply their own project funding with the necessary amount to conduct the research exchange under the project. Regarding the provision of funding, Japanese institutions should refer to pertinent regulations.

(3) Applications that lack funding or whose main object is to seek aid for the counterpart country are not eligible for this program. After being selected, core institutions in counterpart countries are required to submit a document confirming whether or not they were able to secure matching funds. The

schedule for this confirmation process is posted on JSPS's website. (See [http://www.jsps.go.jp/j-c2c/data/supplementary\\_explanation\\_on\\_matching\\_fund.pdf](http://www.jsps.go.jp/j-c2c/data/supplementary_explanation_on_matching_fund.pdf))

- (4) JSPS's International Program Committee carries out an interim evaluation of projects at their 3-year juncture and also conducts a post-project evaluation. Japanese core institutions should provide JSPS with all the information including project reports requested to perform these assessments. The amount of funding for the fiscal years after the interim evaluation will be based on the results.
- (5) For more details, please refer to VI. Application Instructions.

## B. Asia-Africa Science Platforms

### 1. Targeted Research Fields

Research topics of special importance or significance to Asia and/or African and considered to be of high priority within Japan (All fields of the humanities, social sciences and natural sciences.)

### 2. Eligible Countries

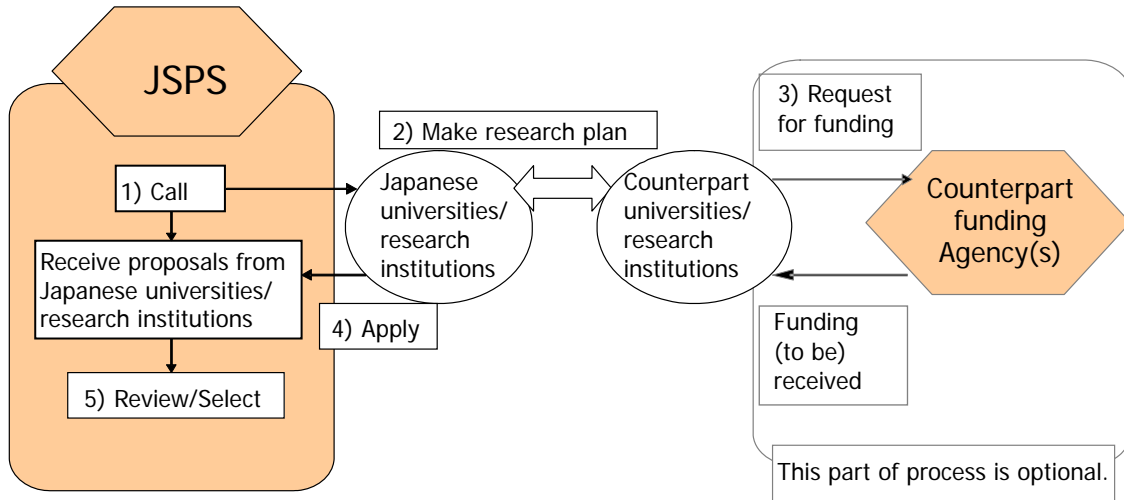
At least two or more Asian and/or African countries which have diplomatic relations with Japan (JSPS treats Taiwan and Palestine in this manner.) However, this program does not support multilateral projects whose researchers are from counterpart countries, such as China, Korea, Singapore or Taiwan, that can be expected to obtain sufficient funding, and that comprise only these counterpart countries. Such projects should be applied for under JSPS's bilateral programs or the Advanced Research Networks program.

### 3. Implementation Method

- (1) The project coordinator's institution or department sets up the implementation framework and carries out the project.
- (2) JSPS provides financial support for carrying out project-related joint research, scientific meetings and researcher exchanges by Japanese core institutions.
- (3) JSPS issues a call for proposals to Japanese universities/research institutions, and conducts reviews and selections. The actual operation of the selected projects is left to the core institutions themselves. Counterpart core institutions in Asian and African countries are encouraged to obtain financial support from science-promotion agencies or other funding organizations in their respective countries.



## Application and Selection Process



### 4. Project Period

From April 2018 through March 2021 (under the FY2018 call)

### 5. Project Funding

- (1) JSPS provides Japanese core institutions with the following funding:  
Up to ¥8 million per fiscal year
- (2) JSPS will cover the following major expenses of the Japanese core institutions:
  - i. International travel expenses
  - ii. Domestic travel expenses
  - iii. Cost of expendable supplies
  - iv. Honorariums
  - v. Others

### 6. Number of Projects Slated to Start in FY2018

About 10 projects

## 7. Screening Criteria in JSPS Reviews

Applications are screened from the following perspectives.

- ① Need for the proposed project and collaboration
  - Degree to which the proposed project is recognized as being of common interest and special importance to the Asian and African regions and whether it is scientifically meaningful for Japan to conduct priority research in the subject fields.
  - Whether there is a clear need and value for the Japanese core institution to take the lead in carrying out the research collaboration with counterpart institutions in Asia and/or Africa.
  - Degree to which the collaboration between the core institutions in Japan and the counterpart countries can be expected to yield results of sufficiently high academic value.
  - Degree to which the project will build upon and expand the core institutions' past international research activities and accomplishments.
- ② Fostering young researchers
  - Whether the project includes a program for honing the skills and expertise of young researchers.
- ③ Creating implementation framework on Japan side
  - On the Japan side, plans to build a core research hub should be strategically placed within the core institution's overall research program.
  - Japanese core institutions should have in place on an institutional level a system for ensuring the ongoing implementation of the proposed project.
  - The project should be capable of enlisting the participation of an adequate number of researchers in Japan who are qualified to build a core research hub.
  - The project should be capable of continuing its operation as a core research hub after funding under this program has ended.
- ④ Network building with counterpart core institutions
  - The match-up of Japanese and counterpart institutions under the project should be one that holds good promise for sustained research collaboration.
  - A clear-cut framework for implementing the project, such as a signed cooperative agreement, should be established between the core institutions.
  - As a core research hub in the subject field, the project should be expected

to contribute to the continuous development of collaboration between the core institutions in the future.

⑤ Appropriateness of research plan

- Whether advanced consultation has been clearly carried out with the coordinator and research institution in the counterpart country, and whether the plan is sufficiently concrete to achieve the project objectives and its contents are highly attainable.

- Whether the research plan is practicable in terms of its fiscal and operational scope.

8. Points to Keep in Mind

(1) This program supports projects of up to three years carried out through networks of collaborating organizations and researchers in hubs formed between core institutions in Japan and other counterpart countries.

(2) When applying for “Asia-Africa Science Platforms,” counterpart core institutions are not necessarily required to obtain project funding from science-promotion agencies or other funding organizations in their respective countries.

(3) For more details, please refer to VI. Application Instructions.

## VI. Application Instructions

- (1) Researchers eligible to receive JSPS financial support under this program are as follows:
  - ① Researchers employed at a university or research institute (In case of Japan, researchers eligible to apply for MEXT Grants-in-Aid for Scientific Research.)
  - ② Postdoctoral researchers at universities or research institutes in Japan
  - ③ Researchers enrolled in a postgraduate course, either master's or doctoral, in Japan
- (2) In principle, one core institution may be established in each counterpart country. Other institutions in each counterpart country will be registered as cooperating institutions.
- (3) In principal, funding provided under this program is for implementing projects between Japan and counterpart countries. It is not for supporting travel by Japanese researchers to a counterpart country for conducting only fieldwork or surveys.
- (4) A moderate number of researchers from other countries may participate in projects as collaborating researchers. Regarding the covering of their costs, Japanese institutions should refer to pertinent regulations.
- (5) Under JSPS's international programs, researchers who are already representing a project in one of JSPS's program categories are not eligible to concurrently represent a project in another category with some exceptions. (Such researchers are those responsible for implementing an already-selected project as its research representative, coordinator, chief seminar organizer or similar capacity. However, the heads of institutions and/or departments who represent the implementing organization are exempted.) For information on the approval of projects overlapping program categories, see Appendix 2 "Table, Overlapping Program Restrictions." The restriction on projects overlapping programs is not meant to limit application by researchers who are already representing another JSPS project or who are in the process of applying for one. In the case of projects overlapping program categories, the representative must choose one or the other: The existing project will be terminated if the representative is changed for the reason that s/he was selected for a new project. This should be borne in mind by those who are or will become the representative of a project another program category. Once an application is submitted, the project's representative may not be changed. Assuming the role of coordinator in projects under both Advanced Research Networks and Asia-Africa Science Platforms is not allowed.

- (6) Japanese coordinators who are now or have been supported under any of JSPS's international programs in the past 5 years are required to describe the objectives and/or results of those research activities and their relevance to the subject Core-to-Core program.
- (7) If the applying institution is receiving or is scheduled to receive from another funding program funding that is relevant to the proposed project, it must state so and clearly describe the relationship of that funding to the project. Note that JSPS will screen out duplicated funding in its review process.

#### VII. Obligation of Japanese Core Institutions

Core institutions are to establish a homepage and proactively post information about the project both during and after the funding period. Though JSPS does not participate in negotiations over rights to results yielded through the project's implementation, core institutions are to acknowledge JSPS's support by mentioning the Core-to-Core Program, when announcing the results.

#### VIII. Measures against misuse of research funds and handling of personal information, etc.

- (1) JSPS will take appropriate measures (e.g. terminate project/seminar, require reimbursement of part or all of allocated funds) in cases of misuse of research funds, improper practices (e.g. fabrication, falsification, plagiarism), unjustifiable acts (e.g. discrimination, harassment), or violation of laws.
- (2) Researchers participating in research activities (excluding Seminars) under this program are obligated to complete before the activity starts a research ethics education course so as to prevent research misconduct.
- (3) Personal information provided by applicants will be handled according to the "Act for the Protection of Personal Information Retained by Independent Administrative Institutions" and JSPS's "Personal Information Protection Policy," and be used solely for the purpose of implementing JSPS programs.

The names and affiliations of the coordinators, project titles, budget, implementation period, annual implementation plans, reports and the evaluation results may be disclosed on JSPS's website and in its publications.

## IX. Others

- (1) JSPS does not support research with military objectives.
- (2) JSPS does not bear responsibility for any accident, sickness or other such incident that may occur over the period of the project's implementation.
- (3) JSPS may discontinue support for the project if carrying it out becomes difficult or impossible due to a natural disaster or other unforeseen circumstances during the implementation period.
- (4) As to the ownership of rights for research results obtained under the JSPS Core-to-Core Program, they are to be determined by the core institutions based on pertinent laws and regulations in Japan and the counterpart countries. JSPS does not intercede in this process. The core institutions are asked to decide in advance the rules pertaining to the ownership of intellectual property rights.
- (5) Along with the development of information communication technology (ICT) over recent years, scientific journals are using the Internet to provide free access to research papers. This "open access" trend is proliferating rapidly across the globe. Many public grant institutions are either promoting or requiring open access for the results of research projects they fund. Researchers who author papers under the Core-to-Core Program are, within the degree possible, asked to proactively give open access to their published papers.

Appendix

Cost-sharing with counterpart countries

A. Advanced Research Networks

Examples of Equivalent Burden Sharing

【Pattern 1】

Institution		JSPS	Counterpart Agency
Cost Items			
Japan-side researchers	International airfare	○	X
	Maintenance in counterpart country	○	X
	Travel in Japan	○	X
	Research grant	○	X
Other-side researchers	International airfare	X	○
	Maintenance in Japan	X	○
	Travel in home country	X	○
	Research grant	X	○
Cost for holding seminars in Japan		○	X
Cost for holding seminars in counterpart country		X	○
Research equipment costs at core institution		X	X

【Pattern 2】

Cost Items		Institution	JSPS	Counterpart Agency
Japan-side researchers	International airfare		○	X
	Maintenance in counterpart country		X	○
	Travel in Japan		○	X
	Research grant		○	X
Other-side researchers	International airfare		X	○
	Maintenance in Japan		○	X
	Travel in home country		X	○
	Research grant		X	○
Cost for holding seminars in Japan			○	X
Cost for holding seminars in counterpart country			X	○
Research equipment costs at core institution			X	X



## B. Asia-Africa Science Platforms

Cost Items	Coverable by JSPS
<b>Japan-side researchers</b>	
International airfare	○
Maintenance in counterpart country	○
Travel in Japan	○
Research grant	○
<b>Other-side researchers</b>	
International airfare	○
Maintenance in Japan	○
Travel in home country	X
Research grant	○
Cost for holding seminars in Japan	○
Cost for holding seminars in counterpart country	○
Research equipment costs at core institution	X

## Appendix 2

Table, Overlapping Program Restrictions

This table shows the overlapping restrictions on a researcher who is already the representative of a project under one program category (Program A) and applies for an international project under another category (Program B).

Program A \ Program B	① Bilateral Programs (Joint Research Projects/Seminars)	③ JSPS-NSF Partnerships for International Research and Education (PIRE)	④ Open Research Area for the Social Sciences	⑤ Joint Research Projects with SNSF (JRPs)	⑥ Japanese-German Graduate Externship	⑦ JSPS Core-to-Core Program	⑧ A3 Foresight Program	⑨ Program for Advancing Strategic International Networks to Accelerate the Circulation of Talented Researchers	⑩ FAPESP-JSPS Joint Research Workshop
① Bilateral Programs (Joint Research Projects/Seminars)	△	△	△	△	×	×	×	×	△
② JSPS-NSF International Collaborations in Chemistry (ICC)	△	×	×	×	×	×	×	×	○
③ JSPS-NSF Partnerships for International Research and Education (PIRE)	△	—	×	×	×	×	×	×	○
④ Open Research Area for the Social Sciences	△	×	—	×	×	×	×	×	○
⑤ Joint Research Projects with SNSF (JRPs)	△	×	×	—	×	×	×	×	○
⑥ Japanese-German Graduate Externship	×	×	×	×	—	×	×	×	×
⑦ JSPS Core-to-Core Program	×	×	×	×	×	—	×	×	×
⑧ A3 Foresight Program	×	×	×	×	×	×	—	×	×
⑨ Program for Advancing Strategic International Networks to Accelerate the Circulation of Talented Researchers (Program name was changed in FY2014 from 'Strategic Young Researcher Overseas Visits Program for Accelerating Brain Circulation.')	×	×	×	×	×	×	×	×	×
⑩ FAPESP-JSPS Joint Research Workshop	△	○	○	○	×	×	×	×	—

### Notes

○: The researcher may be the representative of two projects in overlapping programs

△: The researcher may not be the representative of two projects in overlapping programs if they are with the same counterpart country

×: The researcher may not be the representative of two projects in overlapping programs