

FY2013 Re-Inventing Japan Project (AIMS Program)

Tokyo University of Agriculture and Technology (TUAT)

(Japanese Partner Universities: Ibaraki University, Tokyo Metropolitan University)

【Name of project】 (Adopted year: FY2013, AIMS Program)

ASEAN Initiative to foster next generation talents to lead environmentally friendly food production, technological innovation and regional planning.

【Aim of project, Ideals of Global Human Resource on the project】

To foster global minded persons with consideration to environment who can construct platform for development and growth, and co-existence of nature and human society.

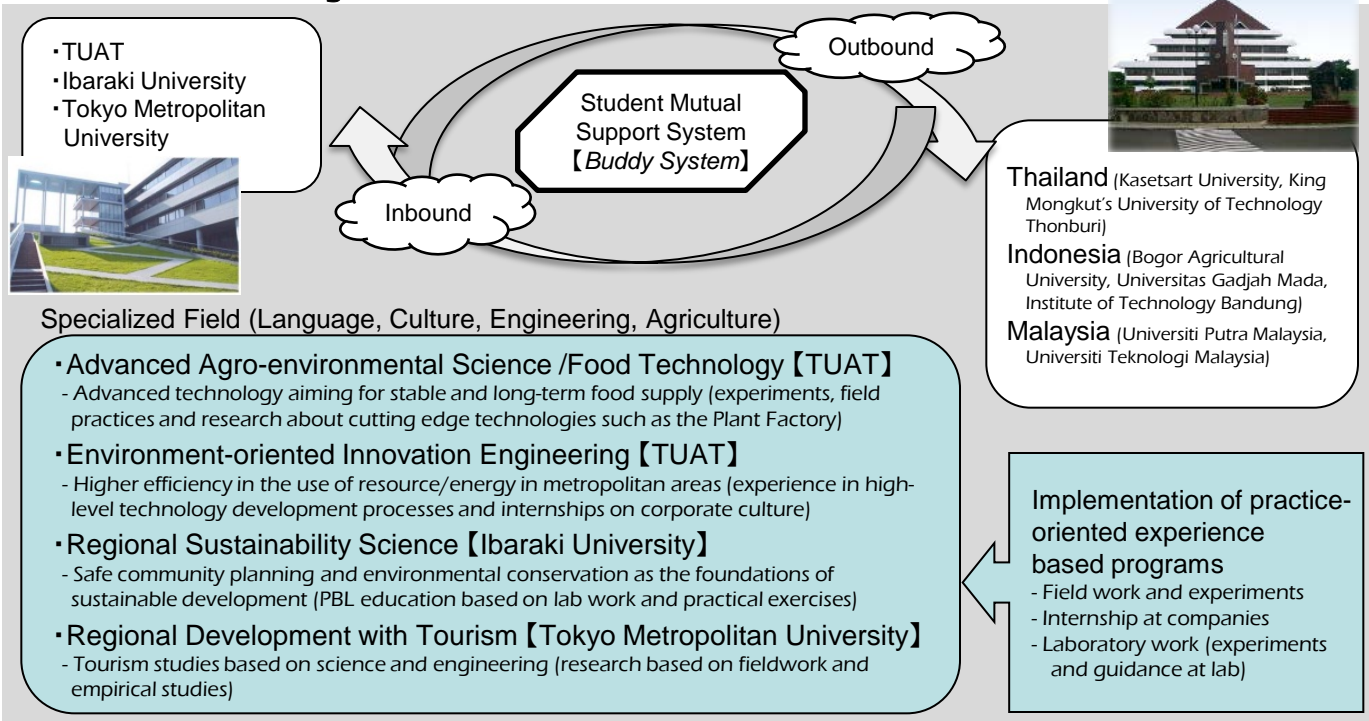
【Summary of project】

- Establishment of a consortium for human resource development in ASEAN
- Opening of 4 new educational programs exploiting the strengths of each of the three Japanese Partner Universities
- Establishment of outbound programs to promote a deeper understanding of the ASEAN through the study of its history, culture, society and economy.
- Establishment of a Double Degree Course to encourage students of AIMS Program to pursue postgraduate studies at Graduate Schools.

Program with Quality Assurance

- Promotion of an objective academic evaluation by introduction of the GPA system and establishment of an internal credit exchange assessment committee, through which credit recognition is implemented under a rigorous academic record management.

Contents of the Programs



Student-Mobility

Note: These numbers are at application of this project.

	H25						H26						H27						H28						H29					
	M	I	T	V	P	B	M	I	T	V	P	B	M	I	T	V	P	B	M	I	T	V	P	B	M	I	T	V	P	B
Outbound	-	-	-	-	-	-	7	13	7	-	-	-	9	14	7	-	-	-	12	15	9	-	-	-	15	19	11	-	-	-
Inbound	0						27						30						36						45					

M: Malaysia I: Indonesia T: Thailand V: Vietnam P: Philippines B: Brunei

Promotion of Student-Mobility Environment

○ Systems to support foreign students

- Employ Program Coordinators
- Academic consultation prior to arrival in Japan

○ Systems to support Japanese students

- Pre-training (intensive language studies and destination country/area studies)
- Establishment of a Counseling system during the exchange program (at both home and host university)

○ Systems to support both Japanese and foreign students

- Introduction of a *Buddy System* for AIMS and Japanese students' mutual support
- Utilization of Global Café and other spaces to promote daily exchanges



〈Mini-Concert at the Global Café〉

FY2013 Re-Inventing Japan Project (AIMS Program)

Tokyo University of Agriculture and Technology (TUAT)

(Japanese Partner Universities: Ibaraki University, Tokyo Metropolitan University)

【Name of project】 (Adopted year: FY2013, AIMS Program)

ASEAN Initiative to foster next generation talents to lead environmentally friendly food production, technological innovation and regional planning.

【Aim of project, Ideals of Global Human Resource on the project】

To foster global minded persons with consideration to environment who can construct platform for development and growth, and co-existence of nature and human society.

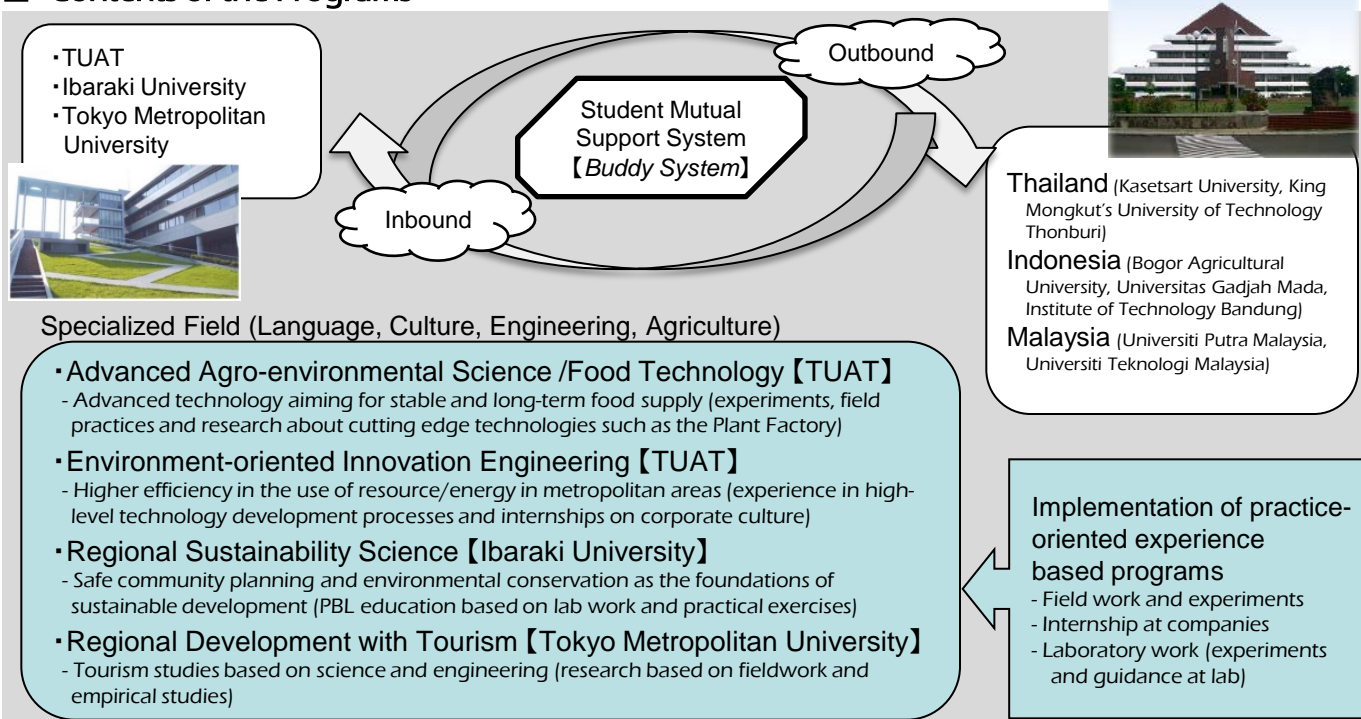
【Summary of project】

- Establishment of a consortium for human resource development in ASEAN
- Opening of 4 new educational programs exploiting the strengths of each of the three Japanese Partner Universities
- Establishment of outbound programs to promote a deeper understanding of the ASEAN through the study of its history, culture, society and economy.
- Establishment of a Double Degree Course to encourage students of AIMS Program to pursue postgraduate studies at Graduate Schools.

Program with Quality Assurance

- Promotion of an objective academic evaluation by introduction of the GPA system and establishment of an internal credit exchange assessment committee, through which credit recognition is implemented under a rigorous academic record management.

Contents of the Programs



Student-Mobility

Note: FY2013 results, FY2014 - 2017 planned

	2013						2014						2015						2016						2017					
	M	I	T	V	P	B	M	I	T	V	P	B	M	I	T	V	P	B	M	I	T	V	P	B	M	I	T	V	P	B
Outbound	0	0	0	0	0	0	7	13	7	-	-	-	9	14	7	-	-	-	12	15	9	-	-	-	15	19	11	-	-	-
Inbound	0						27						30						36						45					

M: Malaysia I: Indonesia T: Thailand V: Vietnam P: Philippines B: Brunei

※As part of the AIMS Program, TUAT carried out a Short-Term Exchange Program with Malaysia and Indonesia in March 2014 (Outbound:42, Inbound:26).

Promotion of Student-Mobility Environment

Systems to support foreign students

- Employ Program Coordinators / Academic consultation prior to arrival

Systems to support Japanese students

- Pre-training (intensive language studies and destination country/area studies)
- Establishment of a Counseling system during the exchange program (at both home and host university)

Systems to support both Japanese and foreign students

- Introduction of a *Buddy System* for AIMS and Japanese students' mutual support
- Utilization of Global Café and other spaces to promote daily exchanges



〈A presentation about "Cool Japan" by AIMS students〉



〈AIMS students at a workshop on Sustainability〉

FY2013 Re-Inventing Japan Project (AIMS Program)

Tokyo University of Agriculture and Technology (TUAT)

(Japanese Partner Universities: Ibaraki University, Tokyo Metropolitan University) in FY2014

【Name of project】(Adopted year: FY2013, AIMS Program)

ASEAN Initiative to foster next generation talents to lead environmentally friendly food production, technological innovation and regional planning.

【Aim of project, Ideals of Global Human Resource on the project】

Talents with global vision to solve challenges in Asia in areas of agriculture, engineering and food science including co-existence of development and growth, and of nature and human society.

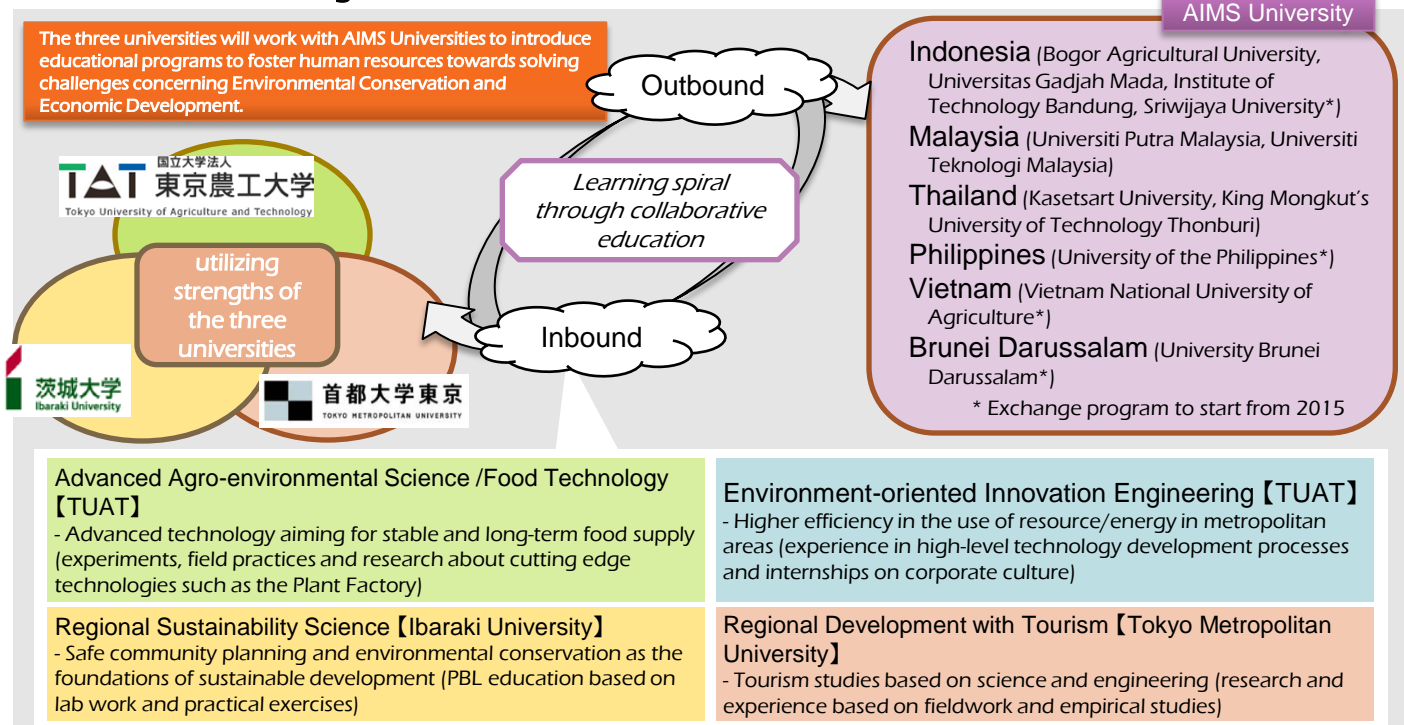
【Summary of project】

- Establishment of a consortium for human resource development in ASEAN
- Establishment of outbound programs to promote a deeper understanding of the ASEAN through the study of its history, culture, society and economy.
- Opening of 4 new educational programs exploiting the strengths of each of the three Japanese Partner Universities
- Establishment of a Double Degree Course to encourage students of AIMS Program to pursue postgraduate studies at Graduate Schools.

■ Program with Quality Assurance

- Promotion of an objective academic evaluation by introduction of the GPA system and establishment of an internal credit exchange assessment committee, through which credit recognition is implemented under a rigorous academic record management.

■ Contents of the Programs



■ Student-Mobility

Note: FY2013-2014 results, FY2015-2017 planned.

	2013						2014						2015						2016						2017					
	M	I	T	V	P	B	M	I	T	V	P	B	M	I	T	V	P	B	M	I	T	V	P	B	M	I	T	V	P	B
Outbound	0	0	0	0	0	0	12	14	3	0	0	0	9	14	7	-	-	-	12	16	9	1	2	1	15	20	11	1	2	1
Inbound	0						35						30						41						50					

M: Malaysia I: Indonesia T: Thailand V: Vietnam P: Philippines B: Brunei

■ Promotion of Student-Mobility Environment

○ Employment of Program Coordinators (Outbound/Inbound)

- Provide intensive support including procedure for class registration and visa application.

○ Introduction of the Buddy System (Mutual support system between AIMS and Japanese students)

- Study together and support each other at classes, filed works and daily activities.
- Build alumni network and act as exchange mediators after completing study programs abroad.

○ Provision of consistent support to Japanese students (Outbound)

- Provide consistent support including pre-training (language, ASEAN history and culture, intensive classes), consultation during studying abroad, and education after return to Japan.



〈 Japanese and international students at joint activities 〉

FY2013 Re-Inventing Japan Project (AIMS Program)

Tokyo University of Agriculture and Technology (TUAT)

(Japanese Partner Universities: Ibaraki University, Tokyo Metropolitan University) in FY2015

【Name of project】(Adopted year: FY2013, AIMS Program)

ASEAN Initiative to foster next generation talents to lead environmentally friendly food production, technological innovation and regional planning.

【Aim of project, Ideals of Global Human Resource on the project】

Talents with global vision to solve challenges in Asia in areas of agriculture, engineering and food science including co-existence of development and growth, and of nature and human society.

【Summary of project】

- Establishment of a consortium for human resource development in ASEAN
- Establishment of outbound programs to promote a deeper understanding of the ASEAN through the study of its history, culture, society and economy.
- Opening of 4 new educational programs exploiting the strengths of each of the three Japanese Partner Universities
- Establishment of a Double Degree Course to encourage students of AIMS Program to pursue postgraduate studies at Graduate Schools.

■ Program with Quality Assurance

- Promotion of an objective academic evaluation by introduction of the GPA system and establishment of an internal credit exchange assessment committee, through which credit recognition is implemented under a rigorous academic record management.

■ Contents of the Programs

AIMS University

The three universities will work with AIMS Universities to introduce educational programs to foster human resources towards solving challenges concerning Environmental Conservation and Economic Development.

Learning spiral through collaborative education

Outbound

- Indonesia (Bogor Agricultural University, Universitas Gadjah Mada, Institute of Technology Bandung, Sriwijaya University*)
- Malaysia (Universiti Putra Malaysia, Universiti Teknologi Malaysia)
- Thailand (Kasetsart University, King Mongkut's University of Technology Thonburi)
- Philippines (University of the Philippines*)
- Vietnam (Vietnam National University of Agriculture*)
- Brunei Darussalam (University Brunei Darussalam*)

* Exchange program to start from 2015

Advanced Agro-environmental Science /Food Technology 【TUAT】

- Advanced technology aiming for stable and long-term food supply (experiments, field practices and research about cutting edge technologies such as the Plant Factory)

Environment-oriented Innovation Engineering 【TUAT】

- Higher efficiency in the use of resource/energy in metropolitan areas (experience in high-level technology development processes and internships on corporate culture)

Regional Sustainability Science 【Ibaraki University】

- Safe community planning and environmental conservation as the foundations of sustainable development (PBL education based on lab work and practical exercises)

Regional Development with Tourism 【Tokyo Metropolitan University】

- Tourism studies based on science and engineering (research and experience based on fieldwork and empirical studies)

■ Student-Mobility

Note: FY2013-2015 results, FY2016 - 2017 planned .

	2013						2014						2015						2016						2017					
	M	I	T	V	P	B	M	I	T	V	P	B	M	I	T	V	P	B	M	I	T	V	P	B	M	I	T	V	P	B
Outbound	0	0	0	0	0	0	12	14	3	0	0	0	11	12	9	0	0	0	12	16	9	1	2	1	15	20	11	1	2	1
Inbound	0	0	0	0	0	0	12	16	7	0	0	0	20	11	9	0	0	4	41						50					

M: Malaysia I: Indonesia T: Thailand V: Vietnam P: Philippines B: Brunei

■ Promotion of Student-Mobility Environment

- **Employment of Program Coordinators (Outbound/Inbound)**
 - Provide intensive support including procedure for class registration and visa application.
- **Introduction of the Buddy System (Mutual support system between AIMS and Japanese students)**
 - Study together and support each other at classes, filed works and daily activities.
 - Build alumni network and act as exchange mediators after completing study programs abroad.
- **Provision of consistent support to Japanese students (Outbound)**
 - Provide consistent support including pre-training (language, ASEAN history and culture, intensive classes), consultation during studying abroad, and education after return to Japan.



〈 Japanese and international students at joint activities 〉

FY2013 Inter-University Exchange Project (AIMS Program)

Tokyo University of Agriculture and Technology (TUAT)

(Japanese Partner Universities: Ibaraki University, Tokyo Metropolitan University) in FY2016

【Name of project】(Adopted year: FY2013, AIMS Program)

ASEAN Initiative to foster next generation talents to lead environmentally friendly food production, technological innovation and regional planning.

【Aim of project, Ideals of Global Human Resource on the project】

To foster talents with global vision to solve challenges in Asia in areas of agriculture, engineering and food science including co-existence of development and growth, and of nature and human society.

【Summary of project】

- Establishment of a consortium for human resource development in ASEAN
- Establishment of outbound programs to promote a deeper understanding of the ASEAN through the study of its history, culture, society and economy.
- Opening of 4 new educational programs exploiting the strengths of the three Japanese Partner Universities
- Establishment of a Double Degree Course to encourage AIMS students to pursue postgraduate studies.

■ Program with Quality Assurance

Promotion of an objective academic evaluation by the GPA system and an internal credit exchange assessment committee, which enable credit recognition under a rigorous management of academic records.

■ Contents of the Programs

Implement one-semester exchange for undergraduates with ASEAN universities with credit transfer.

To create a Double-degree course with partner institutions.

Bogor Agricultural University 【TUAT】 【IU】

Universitas Gadjah Mada 【IU】

* Promote enrollment in the double-degree programs after the one-semester outbound program.



Learning spiral through collaborative education

* Three universities each set up program courses in English for inbound students.

Advanced Agro-environmental Science /Food Technology 【TUAT】

Regional Sustainability Science 【IU】

Environment-oriented Innovation Engineering 【TUAT】

Regional Development with Tourism 【TMU】

The underlined universities were added after FY 2014

【Indonesia】...Bogor Agricultural University, Universitas Gadjah Mada, Sriwijaya University, Institute of Technology Bandung

【Malaysia】...Universiti Putra Malaysia, Universiti Teknologi Malaysia

【Thailand】...Kasetsart University, Chiang Mai University, King Mongkut's University of Technology Thonburi

【Philippines】...The University of the Philippines Los Banos, The University of the Philippines Diliman, De La Salle University, St. Louis University

【Brunei】...Universiti Brunei Darussalam

【Vietnam】...Vietnam National University of Agriculture

■ Student-Mobility

Note: FY2013-2016 results, FY2017 planned .

	2013						2014						2015						2016						2017					
	M	I	T	V	P	B	M	I	T	V	P	B	M	I	T	V	P	B	M	I	T	V	P	B	M	I	T	V	P	B
Outbound	0	0	0	0	0	0	12	14	3	0	0	0	11	12	9	0	0	0	13	10	14	0	4	0	15	20	12	1	4	2
Inbound	0	0	0	0	0	0	12	16	7	0	0	0	20	11	9	0	0	4	20	12	12	0	10	0	15	20	12	1	4	2

M: Malaysia I: Indonesia T: Thailand V: Vietnam P: Philippines B: Brunei

■ Promotion of Student-Mobility Environment

○ Comprehensive support system for students (Outbound/Inbound)

- Intensive administrative support including class registration and visa application.
- Consistent educational support from pre-departure training (language, ASEAN history/culture, intensive classes) to post-return consultation and education programs.

○ Buddy System by students (Outbound/Inbound)

- Build alumni network and act as exchange mediators after completing study programs abroad.

○ Human resource development system covering all levels of undergraduate and graduate school (Outbound/Inbound)

- Created Double-degree courses with Indonesian partner universities. AIMS inbound students advanced to master courses at TUAT and IU.



〈 Japanese and international students at joint activities 〉

FY2013 Inter-University Exchange Project (AIMS Program)

Tokyo University of Agriculture and Technology (TUAT)

(Japanese Partner Universities: Ibaraki University, Tokyo Metropolitan University) in FY2017

【Name of project】(Adopted year: FY2013, AIMS Program)

ASEAN Initiative to foster next generation talents to lead environmentally friendly food production, technological innovation and regional planning.

【Aim of project, Ideals of Global Human Resource on the project】

To foster talents with global vision to solve challenges in Asia in areas of agriculture, engineering and food science including co-existence of development and growth, and of nature and human society.

【Summary of project】

- Establishment of a consortium for human resource development in ASEAN
- Establishment of outbound programs to promote a deeper understanding of the ASEAN through the study of its history, culture, society and economy.
- Opening of 4 new educational programs exploiting the strengths of the three Japanese Partner Universities
- Establishment of a Double Degree Course to encourage AIMS students to pursue postgraduate studies.

■ Program with Quality Assurance

Promotion of an objective academic evaluation by the GPA system and an internal credit exchange assessment committee, which enable credit recognition under a rigorous management of academic records.

■ Contents of the Programs

Implement one-semester exchange for undergraduates with ASEAN universities with credit transfer.

To create a Double-degree course with partner institutions.

Bogor Agricultural University [TUAT][IU] Universitas Gadjah Mada [TUAT][IU]

* Promote enrollment in the double-degree programs after the one-semester outbound program.



Learning spiral through collaborative education

* Three universities each set up program courses in English for inbound students.

The underlined universities were added after FY 2014

【Indonesia】...Bogor Agricultural University, Universitas Gadjah Mada, Sriwijaya University, Institute of Technology Bandung

【Malaysia】...Universiti Putra Malaysia, Universiti Teknologi Malaysia

【Thailand】...Kasetsart University, Chiang Mai University, King Mongkut's University of Technology Thonburi

【Philippines】...The University of the Philippines Los Banos, The University of the Philippines Diliman, De La Salle University, St. Louis University

【Brunei】...Universiti Brunei Darussalam

【Vietnam】...Vietnam National University of Agriculture

Advanced Agro-environmental Science /Food Technology [TUAT]

Regional Sustainability Science [IU]

Environment-oriented Innovation Engineering [TUAT]

Regional Development with Tourism [TMU]

■ Student-Mobility

	2013						2014						2015						2016						2017					
	M	I	T	V	P	B	M	I	T	V	P	B	M	I	T	V	P	B	M	I	T	V	P	B	M	I	T	V	P	B
Outbound	0	0	0	0	0	0	12	14	3	0	0	0	11	12	9	0	0	0	13	10	14	0	4	0	13	16	20	0	6	1
Inbound	0	0	0	0	0	0	12	16	7	0	0	0	20	11	9	0	0	4	20	12	12	0	10	0	16	23	10	0	13	0

M: Malaysia I: Indonesia T: Thailand V: Vietnam P: Philippines B: Brunei

■ Promotion of Student-Mobility Environment

○ Comprehensive support system for students (Outbound/Inbound)

- Intensive administrative support including class registration and visa application.
- Consistent educational support from pre-departure training (language, ASEAN history/culture, intensive classes) to post-return consultation and education programs.

○ Buddy System by students (Outbound/Inbound)

- Build alumni network and act as exchange mediators after completing study programs abroad.

○ Human resource development system covering all levels of undergraduate and graduate school (Outbound/Inbound)

- Created Double-degree courses with Indonesian partner universities. AIMS inbound students advanced to master courses at TUAT and IU.



〈 Japanese and international students at joint activities 〉