

FY2016 Inter-University Exchange Project Waseda University

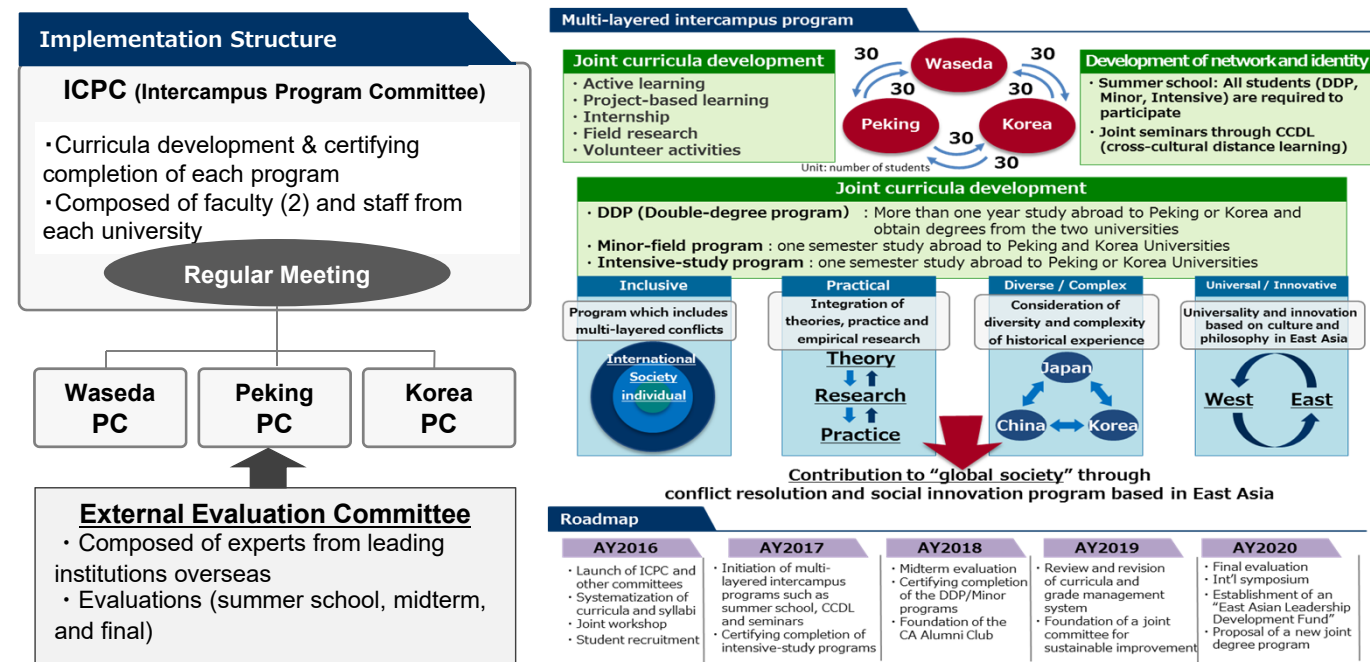
Support for the Formation of Collaborative Programs with Universities in Asia

【Name of project】 (Adopted year: FY2016, (Type A-② CAMPUS Asia))

East Asian Global Leadership Program for Multi-layered Conflict Resolution and Social Innovation

【Summary of Project】

- Universities today have an important responsibility to society to develop leaders with a strong desire to resolve conflicts ranging from large-scale international disputes to those at the local community level, and equipped with the necessary practical skills and strategies to do so.
- The three leading universities in East Asia (Korea Univ., Peking Univ., and Waseda Univ.) will implement new education methods such as Active Learning, Project Based Learning, Internship, and Field Research, and support the next-generation East Asian leaders to develop their network and identity.



【Summary of Exchange program】

The 3 universities, Korea, Peking, and Waseda, will exchange the same number of students at Double Degree Program, Minor-field Program, and Intensive-study Program, and will jointly develop innovative education curriculum.

- <Double Degree Program> More than 1 year study abroad to Korea or Peking and obtain degrees from the 2 universities
- <Minor-field Program> 1 semester study abroad to Korea and Peking Universities
- <Intensive-study Program> 1 semester study abroad to Korea or Peking University

【Global Human Resource on the project】

- "Social innovation" competence : to commit oneself for social change by seeking solutions to conflicts at different levels
- "Effective communication" competence : to appreciate differences in opinions, political standpoints, cultures and histories
- "Analytic research" competence : to possess professional knowledge and analytical approaches regarding conflicts
- "Practical application" competence : to utilize knowledge for social change

【Feature on the project】

• Conflict resolution studies is already an established academic field in Western universities, but it remains underdeveloped in East Asia. In this project, the 3 universities will jointly develop an innovative curriculum that, while drawing on existing programs in the West, takes into account specifically East Asian cultures and histories.

【Exchange number】

	2016	2017	2018	2019	2020
Accepted number in Japan	C 5	C 15	C 20	C 30	C 30
	K 5	K 15	K 20	K 30	K 30
Accepted number in China	J 5	J 15	J 20	J 30	J 30
	K 5	K 15	K 20	K 30	K 30
Accepted number in Korea	J 5	J 15	J 20	J 30	J 30
	C 5	C 15	C 20	C 30	C 30

1. FY2016 Progress

【Waseda University】

【Name of project】(Adopted year: FY2016, (Type A-② CAMPUS Asia))

East Asian Global Leadership Program for Multi-layered Conflict Resolution and Social Innovation

■ Exchange Programs

- Since this project started from October 31, 2016, the actual exchange program would start from 2017 on. However, active discussion on development of new curriculum and exchange program was conducted at 2 ICPC meetings.
- For internal activities, the CAMPUS Asia Orientation Meeting was held for freshman at Waseda Univ. in April 2017.
- For PR activities, HP, Facebook, and Twitter were newly set up in order to inform students about CAMPUS Asia exchange program and curriculum.
- As a result of discussion on student mobility between 3 universities, students from Korea university visited Waseda Univ. and had a fruitful meeting with Waseda students.



〈2017.4.3 Orientation at Waseda Univ.〉



〈2017.4.19 Students and Faculties of 3 universities after Joint Workshop〉

Student-Mobility

- In FY2016, student mobility was not conducted both for Outbound and Inbound due to the start date.

	2016
Accepted number in Japan	C 0 K 0
Accepted number in China	J 0 K 0
Accepted number in Korea	J 0 C 0

■ Forming the University Network with Quality Assurance

- Set up PC (Program Committee) at each university.
- Held the 1st ICPC (Inter-Campus Program Committee. Consists of at least 2 faculties and admin. staff) Meeting at Peking Univ. in Dec 2016, the 2nd Meeting via video conference system in Feb 2017, and the 3rd Meeting at Waseda Univ. in Apr 2017.
- Visited experts in leading institutions overseas in Feb-Mar 2017 to seek for possibilities of being a member of External Evaluation Committee.
- Developed curriculum and syllabus.
- Conducted a joint workshop at Waseda Univ. in Apr 2017 to introduce new education method.

■ Promotion of Student-Mobility Environment

- Set up HP, Facebook, and Twitter both in Japanese and English for students to obtain necessary information and to ask any questions.

■ Internationalization of the university

Information disclosure and Publication of outcome

- Hired an additional staff who can proficient in English and established a firm operation structure between School of Political Science and Economics, International Affairs Dept. and Center for International Education for mutual check.
- Prepared to set up the External Evaluation Committee for external check.
- Created HP, Facebook, and Twitter to share information such as students' committee activities, curriculum, and program report.

■ Good Practices

- Opened new CAMPUS Asia courses
- Made constant PR activities via internet
- Conducted a joint workshop with 3 universities
- Conducted the Kick-off Symposium at Waseda in Apr 2017
- Opened new seminar series called "Waseda meets Global Leaders"



〈2017.4.19 Joint Workshop〉



〈2017.4.20 Kick-off Symposium〉

2. FY2017 Progress

【 Waseda University】

【Name of project】(Adopted Year: FY2016, Type A-② CAMPUS Asia) East Asian Global Leadership Program for Multi-layered Conflict Resolution and Social Innovation



■ Exchange Programs



〈2017.8.9 Group Work at Summer School〉

- An assistant professor was newly hired, and “CAMPUS Asia courses” on Conflict Resolution and Social Innovation started from April with over 150 students. Besides, “CAMPUS Asia related courses” were selected from each department in Waseda for deeper learners.

- Long-term exchange students were sent to Korea Univ. and Peking Univ. as a pilot case and short-term exchange students were accepted at Summer/Winter School.
- For PR activities, HP, Facebook, and Twitter were newly set up and leaflets and newsletters were published. Orientations for outbound were also held in July 2017 and April 2018.

- Orientation/Dinner in Dec. and Welcome Discussion/Dinner in May, 2018 were held for all CA exchange students to get to know each other and share information.

Student-Mobility

○ Outbound

- Prior to the official start of the student mobility from Spring 2018, 2 students were sent to Peking Univ. and another 2 students were sent to Korea Univ. as a pilot case.

- Flight tickets were provided from the program.

○ Inbound

- Same as outbound, 1 student from Peking Univ. was accepted from Sept. 2017 as a pilot case. She took many CAMPUS Asia courses and became as a good model of “CAMPUS Asia student”.

- 11 students from China and 9 students from Korea were accepted as a short-term exchange for Summer/Winter School.

- All inbound students received JASSO Scholarship.

<Type A-②>

	2017
Accepted number in Japan	C 1 K 0
Accepted number in China	J 2 K 0
Accepted number in Korea	J 2 C 0

※Above number shows only for Long/Mid-term more than 3 months

※ “Accepted number in Japan” for Short-term (Summer / Winter School): C11, K9

※ Throughout Waseda Univ., we sent 36 to Peking Univ. and 4 to Korea Univ., and accepted 26 from PU and 14 from KU in FY2017.

■ Forming the University Network with Quality Assurance

- Held Program Committee (PC) meeting internally twice at each university.
- Held Inter-Campus Program Committee(ICPC) meeting every 2 months.
- Received opinions and advices from external experts.
- Conducted 3 joint FD workshops at Waseda for faculty and staff from the 3 universities.

■ Promotion of Student-Mobility Environment

- In addition to Facebook and Twitter, a new HP was created both in Japanese and English especially for students and faculty in China to obtain necessary information and to ask any questions.
- Started to publish a monthly newsletter for CAMPUS Asia students, exchange students, faculty and staff of the 3 universities by E-mail to share information on people, news and events.



〈 2018.2.9 Visit a local company in Iwate at Winter School 〉

■ Internationalization of the university

Information disclosure and Publication of outcome

- A new administrative staff who is proficient in English was hired, and a firm operation structure was established between School of Political Science and Economics, Dept. of International Affairs and Center for International Education for mutual check.
- HP, Facebook, and Twitter were created to share information such as students’ committee activities, curriculum, and program reports.

■ Good Practices

- New “CAMPUS Asia courses” on Conflict Resolution & Social Innovation
- Summer School @Nagasaki / Winter School @Iwate
- Kick-off Symposium and 3 FD workshops jointly held with the 3 universities
- 6 seminars called “Waseda Meets Global Leaders”
- PR activities via HP, SNS, Leaflet, and Newsletters



〈 2018.5.15 Waseda Meets Global Leaders vol. 7 〉



〈 2017.9.20 ICPC Meeting @ Korea Univ.〉