

【Name of project】(Adopted year: FY2016, (Type A-② CAMPUS Asia))

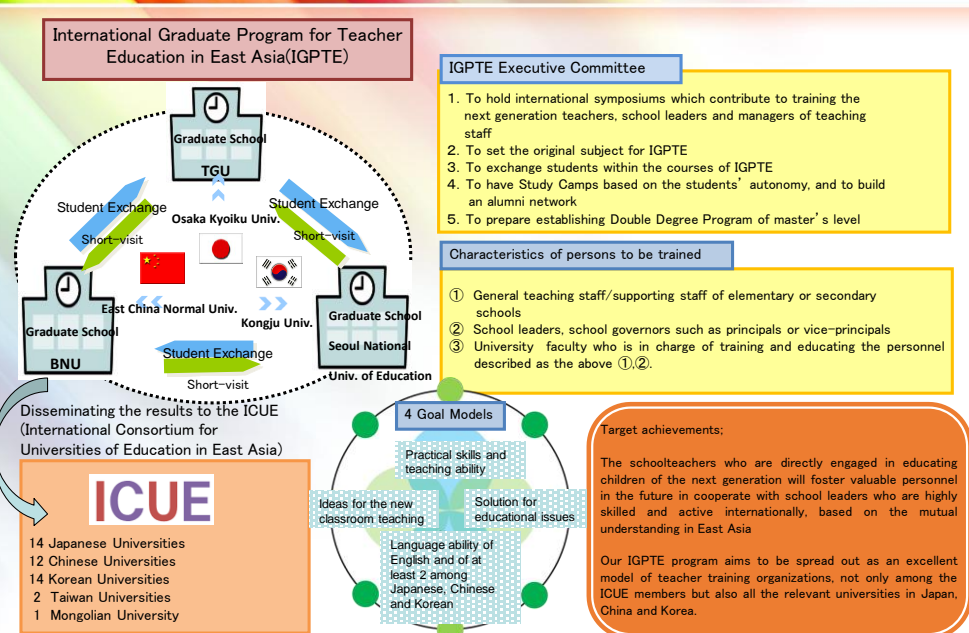
International Graduate Program for Teacher Education in East Asia (IGPTE)

### 【Summary of Project】

International Graduate Program for Teacher Education in East Asia (IGPTE) aims to conduct the CAMPUS Asia program which is leading universities of teacher education in East Asia in conjunction with Beijing Normal University (BNU), Seoul National University of Education (SNUE) and Tokyo Gakugei University (TGU). Those universities conduct unique educational programs based on the International Consortium for Universities of Education in East Asia (ICUE: currently 43 member universities) to achieve the remarkable process of internationalization and revitalize further exchange.

### The outline of International Graduate Program for Teacher Education in East Asia

ICUE



### 【Summary of Exchange program】

To reach 4 goal models, we offer both short and long term programs, a double degree program at Master's level and opportunities for research presentation and build an alumni network. Through these efforts, we provide a high quality education for students to become an international minded school teacher, a school leader or a scholar of education.

### 【Global Human Resource on the project】

The goal model of IGPTE is a person who has:

- Leadership skills in teaching with high cultural refinement education
- Flexibility to various and complex issues in education in East Asia
- Skills for "lesson study" which are as high as internationally recognized level in especially those 3 countries
- Language skills of English and other East Asian 2 languages to become global.

### 【Feature on the project】

As a university of teacher education, we have to face national character and globalization at the same time.

### 【Exchange number】

<TypeA-②>

	2016	2017	2018	2019	2020
Accepted number in Japan	C3 K3	C8 K8	C9 K9	C9 K9	C9 K9
Accepted number in China	J3 K0	J8 K0	J9 K6	J14 K6	J14 K6
Accepted number in Korea	J3 C0	J8 C0	J9 C6	J14 C6	J14 C6

# 1. FY2016 Progress

【Name of project】 Adopted year: FY2016, (TypeA-② CAMPUS Asia)  
International Graduate Program for Teacher Education in East Asia (IGPTE)

## ■ Exchange Programs Student-Mobility

### ○ Outbound

From 2016.2.5 to 2.18, SNUE accepted 17 postgraduate students (15 from BNU and 2 from TGU) as the Winter Program for Trilateral Cooperation (WPTC) a part of Campus Asia program. After the 2 weeks stay in Korea, the debriefing session were held at BNU. TGU sent 3 students to BNU for 1 year as exchange students.



〈WPTC in SNUE〉



### ○ Inbound

TGU accepted 9 Chinese ICUE member universities (3 were from BNU) and 2 from Korea. Provided 1 subject designed for International students. In spring, we offered a camp for students in Nikko.

## ■ Forming the University Network with Quality Assurance

We often conduct the meeting with BNU and SNUE regarding the translation of academic handbook at graduate schools in each country, organization systems, curriculums, credit transfers, and a double degree program.

Also, we carried out the precedence research domestic and foreign for case study.

TGU permitted for International Exchange students to take classes for undergraduate students and graduate students who met the requirement of Japanese eligibility. The quality of these classes are guaranteed by continuous improvement activities of the Office of Promoting for Teachers.

We value short term program and/or non credited program students using various ways of evaluations to improve the quality assurance in education.

## ■ Promotion of Student-Mobility Environment

We plan to foster internationalization within our campus through CAMPUS Asia program. In order to implement, we will place our coordinator from April 2017 to teach students with a finely tuned response. In addition we soon start providing a language laboratory so called Gengo Labo for students studying abroad and improving the language skills to achieve one of our 4 goal models as indicated.

## ■ Internationalization of the university

### Information disclosure and Publication of outcome

We plan to foster internationalization within our campus through CAMPUS Asia program. In order to implement, we will place our coordinator in April 2017 to teach students with a finely tuned response.

In addition we soon start providing a language laboratory so called Gengo Labo for students studying abroad and improving the language skills to achieve one of our 4 goal models as indicated.

## ■ Good Practices

TGU is contributing to help achieving 4 goals for International students through CAMPUS Asia such as "Japanese Education and Culture" and "Learning educational structures and teachers' views in East Asia".

Outstanding way increasing outbound exchange students is that we provide a class of "Gakugei Frontier B" (Guidelines for studying abroad) to TGU students. It's a specially designed for undergraduate students as a regular course since FY2017 and aims to give students an opportunity to learn a significance of study abroad and making their own study abroad plan.

### <TypeA-②>

	2016
Accepted number in Japan	C9 K5
Accepted number in China	J3 K0
Accepted number in Korea	J2 C15



〈Spring Camp in Nikko〉



〈Off-campus Learning at Koishikawa Botanical Garden〉