

FY2013 Re-Inventing Japan Project (AIMS Program)

Tokyo University of Agriculture and Technology (TUAT)

(Japanese Partner Universities: Ibaraki University, Tokyo Metropolitan University) in FY2015

【Name of project】(Adopted year: FY2013, AIMS Program)

ASEAN Initiative to foster next generation talents to lead environmentally friendly food production, technological innovation and regional planning.

【Aim of project, Ideals of Global Human Resource on the project】

Talents with global vision to solve challenges in Asia in areas of agriculture, engineering and food science including co-existence of development and growth, and of nature and human society.

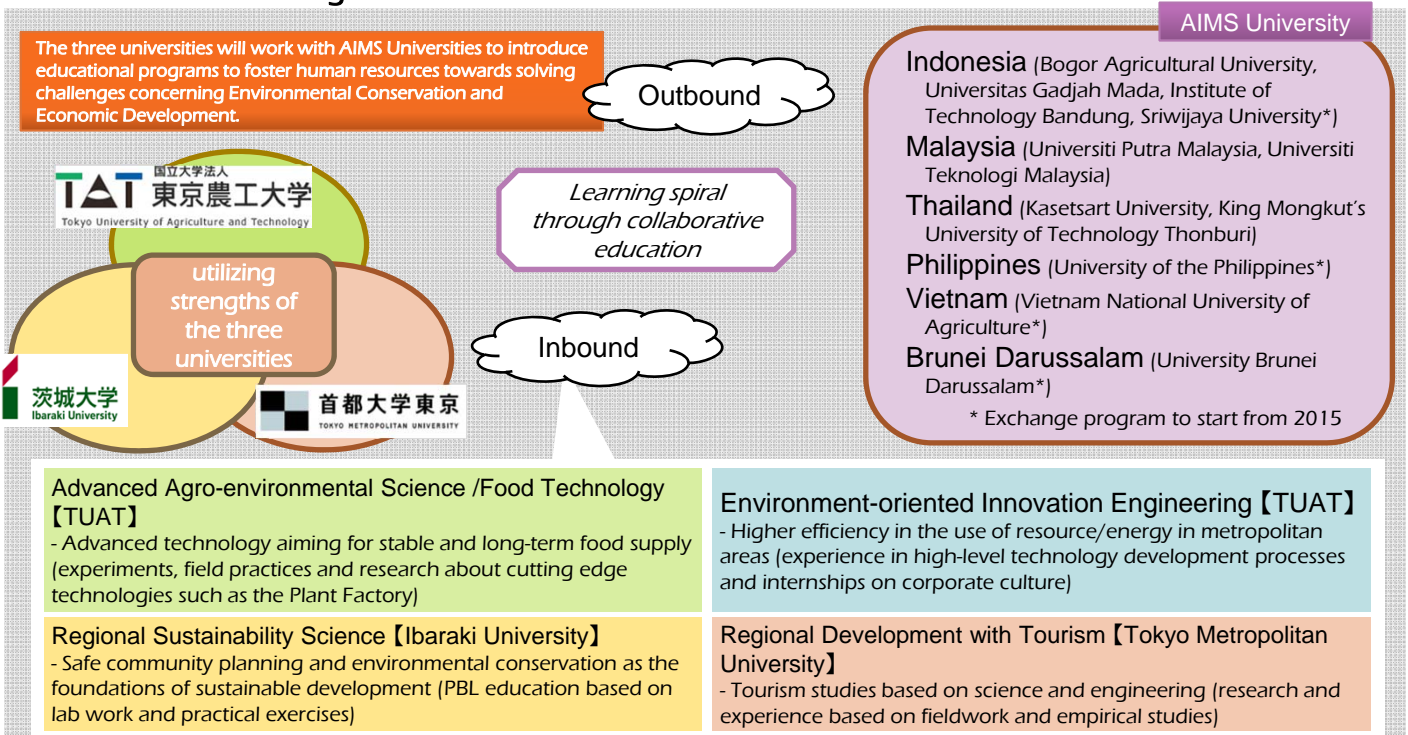
【Summary of project】

- Establishment of a consortium for human resource development in ASEAN
- Establishment of outbound programs to promote a deeper understanding of the ASEAN through the study of its history, culture, society and economy.
- Opening of 4 new educational programs exploiting the strengths of each of the three Japanese Partner Universities
- Establishment of a Double Degree Course to encourage students of AIMS Program to pursue postgraduate studies at Graduate Schools.

■ Program with Quality Assurance

- Promotion of an objective academic evaluation by introduction of the GPA system and establishment of an internal credit exchange assessment committee, through which credit recognition is implemented under a rigorous academic record management.

■ Contents of the Programs



■ Student-Mobility

Note: FY2013-2015 results, FY2016 - 2017 planned .

	2013						2014						2015						2016						2017					
	M	I	T	V	P	B	M	I	T	V	P	B	M	I	T	V	P	B	M	I	T	V	P	B	M	I	T	V	P	B
Outbound	0	0	0	0	0	0	12	14	3	0	0	0	11	12	9	0	0	0	12	16	9	1	2	1	15	20	11	1	2	1
Inbound	0	0	0	0	0	0	12	16	7	0	0	0	20	11	9	0	0	4	41						50					

M: Malaysia I: Indonesia T: Thailand V: Vietnam P: Philippines B: Brunei

■ Promotion of Student-Mobility Environment

○ Employment of Program Coordinators (Outbound/Inbound)

- Provide intensive support including procedure for class registration and visa application.

○ Introduction of the Buddy System (Mutual support system between AIMS and Japanese students)

- Study together and support each other at classes, filed works and daily activities.
- Build alumni network and act as exchange mediators after completing study programs abroad.

○ Provision of consistent support to Japanese students (Outbound)

- Provide consistent support including pre-training (language, ASEAN history and culture, intensive classes), consultation during studying abroad, and education after return to Japan.



〈 Japanese and international students at joint activities 〉