

Top Global University Project (Type B) Chiba University

1. Outline

【 Name of project 】

Chiba University : Inspiring Leaders with a Global Perspective

【 Future vision of the university TGU project 】

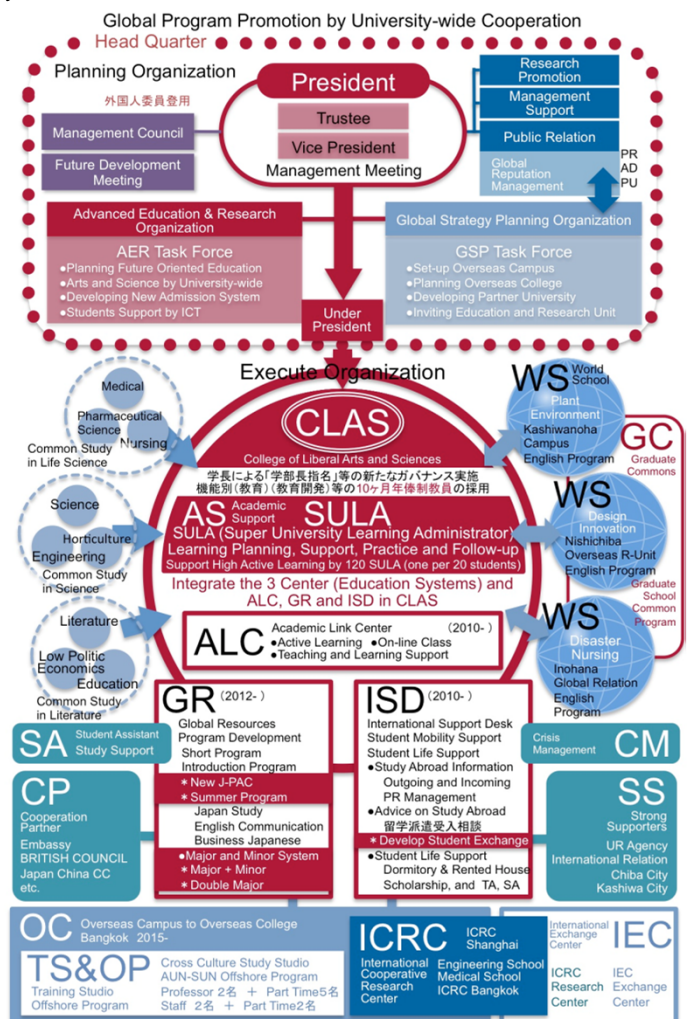
Chiba University drew up the Chiba University Reform Initiative in April 2014. Within the three main fields of study in Chiba University, namely sciences and engineering, life sciences and arts, we aim to educate students to be top level professionals in technology, medicine and business under the umbrella of our [TRIPLE PEAK CHALLENGE]. Considering that the global leaders of the future should be educated with a global perspective, we are designing educational programs to cultivate the intellectual abilities of forming an overview, discovering new perspectives and finding practical solutions, which are fundamental to the development of such leaders. (a globally oriented education). Under the name Rising Chiba University, we will promote the regeneration of Chiba University, establishing a new organization capable of providing a fusion of sciences and humanities, together with professional education. This will enable students to deal flexibly with dynamic changes in society and economy responding to the worldwide demands for globally aligned and innovative human resources.

【 Summary of Project 】

This project aim is to undertake a reform of Chiba University by providing tailor-made education to domestic and overseas students in the new College of Liberal Arts. To do so, we are committed to governance reform, learning system reform and program reform, while carrying out a global network reform, with the goal of opening an extension campus overseas. Above all, Chiba University will introduce a unique program called International Liberal Arts, which is a new early admission system for allowing students to save time by gaining early admission in order to utilize that time for overseas study. For this program, we will create new positions with the title of SULAs (Super University Learning Administrators), who will promote the tailor-made education created to support this program. Ad well as this, we will carry out integrated programs at the postgraduate level for “discovering new perspectives”, and establish various study units for “finding practical solutions”, in order to foster expert, globally-aligned human resources. For this purpose, we have set the following goals: to offer over 700 liberal arts subjects taught in English; to annually send 1200 students, accounting for 50% of one undergraduate year, overseas to study; to accept 3000 overseas students per year; and to enroll 120 students through special entrance examinations per year, (10% of the annual intake). Ultimately, we aim to become a globally-oriented university.



(Fig 1 Outline of Project)



(Fig 2 Outline of System)

【Summary of the 10-year plan】

○ 2014 : RISING program is implemented (“skipwise” for fostering global human resources is also continued), together with internationalization of the school calendar.

The “skipwise” program, which was implemented in 2012 for fostering global human resources, is expanded to become a bidirectional program, sending and accepting overseas students. The Rising program starts this year. With International Japanese Studies as the core, we are continuing to send students overseas, and increase the number of overseas students we accept. To this end, we will increase the number of partner schools and internationalize our school calendar to conform with overseas universities.

○ 2016 : “College of Liberal Arts and Sciences” is established

The “College of Liberal Arts and Sciences” will be established. This is the main project of this program and will be a driving force for fostering global human resources in Chiba University. This College, in which students study a blend of global studies, Japan studies, and science, will be developed from the program of “International Japan Studies”.

○ 2018 : New Global Learning System (Major, Minor, and Certificate programs) is implemented

The three major subjects in the College of Liberal Arts and Sciences, namely: Global Studies, Japan Studies, and General Science will be made available to the entire university, and new minor programs and certificate programs will be offered. Chiba University as a whole will promote the study of integrated arts and science to develop the wide perspective required for leaders in a global environment.

○ 2019 : Promotion of internationalization through the expansion of the early admission system to all faculties.

The early admission system, which is one of the characteristics of Chiba University, is implemented in all faculties. A new entrance examination for the early admission system will be introduced. This will coincide with the start of the planned reforms to the general entrance examination. Under the new early admission examination system, Chiba University is planning to add an entrance examination designed especially for overseas students in order to promote an increase in diversity in Chiba University.

○ 2021 : Summer (Spring) program is fully implemented across all faculties.

The “summer program and spring program”, introduced in 2013 as the new orientation program for students from overseas, will be implemented for all the faculties with a wide range of programs. We aim to accept 1200 overseas students for short terms of study.

○ 2023 : An overseas school is established for realizing the global campus.

We plan to build an overseas school, which is another of the main projects of this program. After establishing a campus in 2016 we aim to achieve our ultimate goal of establishing an overseas school. We intend to send 200 to 300 students to the campus per year.

【Featured initiatives (Internationalization, University reform, Education reform)】

This program will conduct four reforms to transform Chiba University.

■ Transformation through Governance Reform.

The College of Liberal Arts and Sciences will provide integrated art-and-science programs through which students can learn a wide range of subjects from arts to sciences under the key concepts of “global perspectives” and “innovation”. In this new College, an organization called “Academic Support” (AS) will support education operations in all faculties of this university. The AS will train the SULAs (Super Academic Learning Administrators), who will be in charge of academic administration.

■ Learning System Reform from Governance Reform

We will start the International Liberal Arts program, which is a new program for encouraging students to save time by entering university one year early and to spend the time saved on studying abroad. The slogan of this program is “Early enrolment for study abroad”. The school calendar will change to have 6 terms a year, thereby indirectly synchronizing with those of overseas universities, and a system of earning credits will be created.

■ Program Reform from Learning System Reform

We will develop undergraduate and post-graduate programs with the main purpose of integrating arts and sciences for both

Japanese and overseas students in order to allow students to study a wide range of subjects. In particular, cross-faculty World-School programs based on double-major programs for the undergraduate level, and MEXT’s Re-Inventing Japan Project programs for the postgraduate level will be extended to all faculties.

■ Global Network Reform

In the global network reform, we will conduct two major activities: establishment of an overseas campus and interaction among the group of universities affiliated with Chiba University. We will open an overseas campus at Mahidol University in Thailand. The overseas campus will offer experience-type short-term study abroad (training studio) programs, professional education programs, Off-Shore programs, double-degree programs, and joint-degree programs for undergraduate students, and provide international joint research labs (horticultural science, bioscience).



Fig 3 11 Aims for Globalization

2. FY2014 Progress

■ Common indicators and targets

Internationalization

○ Expansion of Programs by Globalization of Teaching Staff

We have employed 12 lecturers so far for conducting the globalization-related programs. The programs are wide-ranging, from Japanese culture/subculture to English communication. We have also increased the number of our liberal art subjects taught in English.



〈English Communication Class〉

○ Further Globalization through the Internationalization of Staff and Training of New Specialist Staff- SULA

SULAs (Super University Learning Administrators), selected from existing staff who have graduated from overseas universities or have studied abroad, will become specialized in learning administration in order to put into practice the proposed tailor-made education, thereby furthering internationalization. In 2014, we selected candidates for the position of SULA in preparation for the future.

○ Program Development for Increasing the Number of Overseas Students and the Number of Coeducation Programs with Japanese Students

We have developed and carried out two experimental short programs. In addition, plans for term-long programs (for 2 months) and other programs are under consideration. A video for a PR campaign for the programs has been made. These programs promote coeducation of overseas and Japanese students, thereby pushing forward our domestic globalization programs.



〈Short Program PR Video〉

○ Internationalization of the School Calendar and Registrar System

Starting in April 2016, we will implement a 6-term system, consisting of 6 terms of 2 months each, in harmonization with school calendars in other countries. This will facilitate the sending of students overseas and the acceptance of overseas students. Especially, the second term (June to July) will have no compulsory subjects so as to promote overseas summer programs, and the third term (August to September) will include programs for overseas students, making it possible to accept them from September. Accordingly, a curriculum map of each department will be created to allow for a clear understanding of our subject system, and English version syllabi are being prepared.

University / Governance reform

○ Preparation for Establishing the College of Liberal Arts and Sciences as a Driving Force for Globalization

Based on the “International Japan Studies program for major subjects (minor subject)”, which is a unique facet of Chiba university, we will establish a new College in which arts and sciences are integrated, so that students will study “Global studies”, “Japan studies” and “Sciences” in combination, thereby pushing forward our goal of globalization. The newly formed college will be the driving force for the new education system of Chiba university, including fostering global human resources. Preparation for its inauguration in 2016 has been completed.



〈Announcement of CLAS on Website〉

○ Global Personnel System

We have introduced an annually reviewed salary system since 2014. As a result, more than 50 people in the staff are under this salary system so far. A cross appointment system, which will be implemented from 2015, will facilitate employment of lecturers from overseas.

○ Cultivation of SULAs and creation of Training System

SULAs, highly-specialized staff in academic administration (mainly for learning support and overseas study), will be recruited and trained. so that Approximately 120 SULAs will be posted in Chiba University's educational operations support organization. In addition, we have implemented a staff training system called Chaperone Training. Some young staff less than 35 years old accompany students on their study abroad programs, to supervise the students and to negotiate and interact with counterpart staff in the partner schools. We have already dispatched 8 persons, thereby increasing their international experience and language skills.

Education reform

○ Promotion of Strong Active Learning Skills (Advanced Active Learning)

In order to promote active learning, whose core is the Academic Link Centre, we have prepared more than 10 project-based active learning subjects. Meanwhile, we have expanded the student assistant system (SA system), increasing the practical roles of SAs such as those working in language learning support in English House.

○ Consideration of a Double Major, Minor, and Certificate System

We have begun deliberations for establishing various systems such as a double major involving the study of both arts and science for a 3 year Bachelor's course (with early graduation) + 2 year Masters course; global minors involving the study of subjects related to Global and Japan studies taught in English, general minors for subjects taught in a general way and certificates, which will have lower criteria to earn credits than minor courses. These courses will be offered alongside the current system.

○ Academic Pathways combining Early Admission and Early Graduation

We are planning a program to make it possible for students to obtain a Bachelor's and Master's degree at the age of 22 (3 year Bachelor's course (early graduation) + 2 year Master's course – 1 year (early admission) = 4 years) by combining early admission and early graduation, which are presently offered for Advanced Science Programs. In addition, the ongoing B7M5 program (3.5 year undergraduate with early graduation and 2.5 year master program including 1-year studying abroad) has moved on from the pilot stage to program implementation.

■ Chiba University's own indicators and targets 753+1 (Shichi Go San plus Ichi) Plan

○ "7" 700 subjects taught in English

Over 700 subjects in English will be offered in the "new" college of liberal arts. In order to do so, we will increase the ratio of foreign teaching staff and expand the joint learning programs with overseas students. The syllabus will be prepared in both Japanese and English. **All newly employed teaching staff from 2015 will teach a liberal arts subject in English.**

○ "5": 50% of each new intake (1200 students) will have an opportunity to study abroad

We will send 1200 students (equivalent to 50% of the intake) overseas to study. In order to do so, we will open an overseas campus and improve the short-term overseas study programs. We will expand this program in cooperation with alumni living overseas. **In the fiscal year of 2014, five new short term study abroad programs were established under the BOOT program.** Approximately 140 students studied abroad under these programs in that year. Various similar programs will be developed in future.

○ "3": Accept 3000 foreign students

By the final fiscal year of this program, we aim to accept 3000 overseas students per year. In order to welcome 800 overseas students for degree programs, 1000 for semester programs, and 1200 for short programs, we will develop various programs ranging from Japanese cultural experience programs to short-term intensive professional programs. In the fiscal year of 2014, **we welcomed 60 overseas students onto short trial programs, one in the summer and one in the winter.**

○ "1" 10% 10% of our intake (240 students) will be accepted through alternative entrance examinations

We will further promote the "early admittance" system, which is a distinguishing feature of Chiba University. In order to do so, we will implement a new early admittance system specifically for overseas study. In addition, we will introduce an International Baccalaureate-based entrance examination and overseas entrance examinations. We will select 10% (=240 students) of the quota via such diversified examinations. **For the College of Liberal Arts and Sciences, which will be established in 2016, it is planned to select 11% of the quota via alternative entrance examinations in English.**

4 original goals for Chiba University

7 We will carry out classes in English for a total of 700 subjects at the NEW LIBERAL ARTS FACULTY. In order to do that we will increase the ratio of foreign teaching staff and expand the joint learning program with overseas students. Syllabuses will also be prepared in Japanese and English.

5 We plan to send 1,200 students overseas, which is the equivalent of 50% of new students. Therefore, we will establish an overseas campus, improve short-term programs and work closely with overseas graduates to increase numbers of students studying abroad.

3 We will accept 3,000 overseas students. We will improve programs from Japanese cultural experience-based programs to various specialized short-term intensive programs and in addition, run a summer program concurrently.

1 Chiba University is known for "early university entrance" and we will further introduce early university entrance especially for overseas study. In addition, we will introduce the International Baccalaureate entrance examinations and overseas entrance examinations and select 10% (240 students) of new entrants through these examinations.

753+1 Plan
(Shichi Go San plus Ichi)

<753+1 Planning Brochure>

■ Featured initiatives based on the characteristics of the university

○ Establishment of College of Liberal Arts and Sciences

In the College of Liberal Arts and Sciences, students will learn to understand international society, and will study new technology and culture originating in Japan, which will make a contribution to the world. The students will be educated to integrate what they learn from a wide range of blended arts and sciences education, and to cultivate the ability to identify and solve problems from a uniquely Japanese viewpoint. **Preparation for the establishment of this College started in the fiscal year of 2014, with the aim of opening it in 2016.**

○ Implementation of Special Staff, SULA

Current staff entitled "Amanuensis" have been trained as personnel specialized in learning administration. SULAs will be trained as the key staff of this program responsible for putting into practice the tailor-made education and will hold a position superior to Amanuensis staff. **Preparations for the introduction of SULAs in 2016 started in 2014.**

○ "International Liberal Arts Program" featuring double major courses and overseas study

The early admission examination, which is currently running, is focused on science courses. Therefore, this program will implement this early admission examination for new combined literature and science courses. ¶ This early admission examination and early graduation will make it possible to obtain a Bachelor's and Master's degree by the age of 22, including long-term study abroad. In addition, **the B7M5 program (3.5 year undergraduate course with early graduation and 2.5 year master program including 1 year studying abroad) has moved on from the pilot stage to program implementation.**

○ World School Postgraduate Major·Minor Program

We will establish the "World School" program to extend globalization to postgraduate schools. The World School is a program bridging a plurality of graduate schools. **In 2015 we will convert the "plant environment designing program", which has been a part of the MEXT Re-Inventing Japan Project, into the World School. In order to do this, we have summarized the achievements so far to design the program.**

■ Free description

○ Construction of a Global Network

In order to strengthen ties with Mahidol University and open a satellite campus, we are pursuing various cooperative activities with this university in Thailand. We will send over 200 undergraduate students per year, establishing a strong coalition with them.

○ Establishing a Network with other Domestic Universities

The 6 national universities alliance of SixERS (Six National Universities International Education and Research System (Niigata, Chiba, Kanazawa, Okayama, Nagasaki, and Kumamoto), which started in 2014, has established a coalition with AUN (ASEAN University Network) and opened a joint office with Northeast Normal University (Changchun, China). We will cooperate with domestic universities through various alliances and aim to establish partnerships with overseas alliances.



<Study Program PR Video in Mahidol>

3. FY2015 Progress

■ Common indicators and targets

Internationalization

○ Expansion of Programs by Globalization of Teaching Staff

We have employed 12 lecturers so far for conducting the globalization-related programs. The programs are wide-ranging, from Japanese culture/subculture to English communication. We have also increased the number of our liberal art subjects taught in English.



〈English Communication Class〉

○ Further Globalization through the Internationalization of Staff and Training of New Specialist Staff- SULA

SULAs (Super University Learning Administrators), selected from existing staff who have graduated from overseas universities or have studied abroad, will become specialized in learning administration in order to put into practice the proposed tailor-made education, thereby furthering internationalization. In FY 2016, we selected two (Chiba University) people as SULAs who were assigned to the College of Liberal Arts and Sciences.

○ Program Development for Increasing the Number of Overseas Students and the Number of Coeducation Programs with Japanese Students

We have developed and carried out two experimental short programs. In FY 2016, we distributed our pamphlets to our partner universities and we will start 13 programs. In addition, plans for term-long programs (for 2 months) and other programs are under consideration. A video for a PR campaign for the programs has been made. These programs promote coeducation of overseas and Japanese students, thereby pushing forward our domestic globalization programs.



〈Short Program PR Video〉

○ Internationalization of the School Calendar and Registrar System

Starting in April 2016, we implemented a 6-term system, consisting of 6 terms of 2 months each, in harmonization with school calendars in other countries. This will facilitate the sending of students overseas and the acceptance of overseas students. Especially, the second term (June to July) has no compulsory subjects so as to promote overseas summer programs, and the third term (August to September) includes programs for overseas students, making it possible to accept them from September.

A numbering system and a curriculum map of each department were created in FY 2015 and introduced in FY 2016. These allow for a clearer understanding of our subject system. English version syllabi are being prepared, and have already been prepared in the faculties of Medicine, Pharmaceutical Sciences and Engineering.

University / Governance reform

○ Establishing the new “College of Liberal Arts and Sciences” as a Driving Force for Globalization

Based on the “International Japan Studies program for major subjects (minor subject)”, which is a unique facet of Chiba University, we established a new College in spring 2016., in which, arts and sciences are integrated, so that students will study “Global studies”, “Japan studies” and “Sciences” in combination. This will push forward our goal of globalization. The newly formed college will be the driving force for the new education system of Chiba University, including fostering global human resources.



〈CLAS 's Website〉

○ Global Personnel System

We have adopted an annually reviewed salary system since FY 2014. As a result, more than 100 people in the staff are under this salary system so far. We will also prepare a cross appointment system which will facilitate employment of lecturers from overseas.

○ Cultivation of SULAs and creation of a Training System

SULAs, highly-specialized staff in academic administration (mainly for learning support and overseas study), will be recruited and trained. Approximately 120 SULAs will be posted in Chiba University's educational operations support organization. In addition, we have implemented a staff training system called Chaperone Training. Some young staff accompany students on their study abroad programs, to supervise the students and to negotiate and interact with counterpart staff in the partner schools. We have already dispatched 12 persons, thereby increasing their international experience and language skills.

Education reform

○ Promotion of Strong Active Learning Skills (Advanced Active Learning)

In order to promote active learning, whose core is the Academic Link Centre, we have prepared more than 10 project-based active learning subjects. Meanwhile, we have expanded the student assistant system (SA system), increasing the practical roles of SAs such as those working in language learning support in English House.

○ Consideration of a Double Major, Minor, and Certificate System

We have begun deliberations for establishing various systems such as a double major involving the study of both arts and science, for a 3 year Bachelor's course (with early graduation) + 2 year Masters course; global minors involving the study of subjects related to Global and Japan studies taught in English; general minors for subjects taught in a general way and certificates, which will have lower criteria to earn credits than minor courses. These courses will be offered alongside the current system.

○ Academic Pathways combining Early Admission and Early Graduation

We are planning a program to make it possible for students to obtain a Bachelor's and Master's degree at the age of 22 (3 year Bachelor's course (early graduation) + 2 year Master's course – 1 year (early admission) = 4 years) by combining early admission and early graduation, which are presently offered for Advanced Science Programs. In addition, the ongoing B7M5 program (3.5 year undergraduate with early graduation and 2.5 year master program including 1-year studying abroad) has moved on from the pilot stage to program implementation.

■ Chiba University's own indicators and targets 753+1 (Shichi Go San plus Ichi) Plan

○ "7": 700 subjects taught in English

Over 700 subjects in English will be offered in the new "College of Liberal Arts and Sciences". In order to do so, we will increase the ratio of foreign teaching staff and expand the joint learning programs with overseas students. The syllabus will be prepared in both Japanese and English. **All newly employed teaching staff from FY 2015 will teach a liberal arts subject in English.**

○ "5": 50% of each new intake (1200 students) will have an opportunity to study abroad

We will send 1200 students (equivalent to 50% of the intake) overseas to study. In order to do so, we will open an overseas campus and increase the short-term overseas study programs. We will expand these program in cooperation with alumni living overseas. **In the FY 2015, approximately 220 students studied abroad under short term study abroad programs including beginners program for study abroad called "BOOT".** Various programs will be developed in future.

○ "3": Accept 3000 foreign students

By the final fiscal year of this program, we aim to accept 3000 overseas students per year. In order to welcome 800 overseas students for degree programs, 1000 for semester programs, and 1200 for short programs, we will develop various programs ranging from Japanese cultural experience programs to short-term intensive professional programs. **In FY 2015, we welcomed 60 overseas students onto short trial programs, one in the summer and one in the winter.**

○ "1": 10% of our intake (240 students) will be accepted through alternative entrance examinations

We will further promote the "early admittance" system, which is a distinguishing feature of Chiba University. In order to do so, we will implement a new early admittance system specifically for overseas study. In addition, we will introduce an International Baccalaureate-based entrance examination and overseas entrance examinations. We will select 10% (=240 students) of the quota via such diversified examinations. **For the College of Liberal Arts and Sciences established in FY 2016, 11% of the quota were selected via alternative entrance examinations in English.**

4 original goals for Chiba University

7 We will carry out classes in English for a total of 700 subjects at the NEW LIBERAL ARTS FACULTY. In order to do that we will increase the ratio of foreign teaching staff and expand the joint learning program with overseas students. Syllabuses will also be prepared in Japanese and English.

5 We plan to send 1,200 students overseas, which is the equivalent of 50% of new students. Therefore, we will establish an overseas campus, improve short-term programs and work closely with overseas graduates to increase numbers of students studying abroad.

3 We will accept 3,000 overseas students. We will improve programs from Japanese cultural experience-based programs to various specialized short-term intensive programs and in addition, run a summer program concurrently.

1 Chiba University is known for "early university entrance" and we will further introduce early university entrance especially for overseas study. In addition, we will introduce the International Baccalaureate entrance examinations and overseas entrance examinations and select 10% (240 students) of new entrants through these examinations.

753+1 Plan
(Shichi Go San plus Ichi)

<753+1 Planning Brochure>

■ Featured initiatives based on the characteristics of the university

○ Establishment of College of Liberal Arts and Sciences

In the College of Liberal Arts and Sciences, students will learn to understand international society, and will study new technology and culture originating in Japan, which will make a contribution to the world. The students will be educated to integrate what they learn from a wide range of blended arts and sciences education, and to cultivate the ability to identify and solve problems from a uniquely Japanese viewpoint. **Preparation for the establishment of this College started in FY 2014, and it was established in 2016 with the approval of the Japanese government.**

○ Implementation of Special Staff, SULA

Current staff "Amanuensis" have been trained as personnel specialized in learning administration. SULAs will be trained as the key staff of this program responsible for putting into practice the tailor-made education and will hold a position superior to Amanuensis staff. **In FY 2016, we selected two persons as SULAs who have been recruited from Chiba University, and they were assigned to the College of Liberal Arts and Sciences.**

○ "International Liberal Arts Program" featuring double major courses and overseas study

We will establish the "World School" program to extend globalization to postgraduate schools. The World School is a program bridging a plurality of graduate schools. **In FY 2015 we converted the "plant environment designing program", which had been a part of the MEXT "Re-Inventing Japan Project", into the World School. In order to do this and to design the program, we compiled information on the accomplishments/ achievements so far.**

○ World School Postgraduate Major·Minor Program

We will establish the "World School" program to extend globalization to postgraduate schools. The World School is a program bridging a plurality of graduate schools. **In 2015 we will convert the "plant environment designing program", which has been a part of the MEXT Re-Inventing Japan Project, into the World School. In order to do this, we have summarize the achievements so far to design the program.**

■ Free description

○ Construction of a Global Network

In order to strengthen ties with Mahidol University and open a satellite campus, we are pursuing various cooperative activities with this university in Thailand. We will send over 200 undergraduate students per year, establishing a strong coalition with them. Also, we have established a Berlin campus in Charité - Universitätsmedizin Berlin/Humboldt Univ. (Germany) and a San Diego campus for life science in University of California, San Diego (USA). We have begun to operate 3 overseas campuses from FY 2016.



<Study Program PR Video in Mahidol>

○ Establishing a Network with other Domestic Universities

The 6 national universities alliance of SixERS (Six National Universities International Education and Research System (Niigata, Chiba, Kanazawa, Okayama, Nagasaki, and Kumamoto), which started in FY 2014, has established a coalition with AUN (ASEAN University Network) and opened a joint office with Northeast Normal University (Changchun, China). We will cooperate with domestic universities through various alliances and aim to establish partnerships with overseas alliances.