

Outline of JSPS's Asian CORE Program, FY2010

1. Objective

This program is designed to create world-class research hubs in selected fields within the Asian region, while fostering the next generation of leading researchers. It does this by establishing sustainable collaborative relations among research/education institutions in Japan and other Asian countries. Under the program, these "core institutions" will collaborate in cutting-edge fields of research and on research topics deemed to be of high international importance.

Core institutions in Japan and other Asian countries conduct exchanges based on a principle of equal partnership. These exchanges will take the form of joint research, seminars and other scientific meetings, and researcher exchanges, which are to be organized and carried out effectively under the program.

It is anticipated that the hubs formed by the core institutions will continue to carry out research activities after the funded project has ended.

2. Targeted Research Topics

Research topics deemed to be of cutting-edge and high international importance.
(All fields of the humanities, social sciences and natural sciences.)

3. Eligible Countries

Asian countries (Core institutions may only be established in Asian countries; however, individual researchers from other countries or regions, including non-Asian, are eligible to participate in projects.)

4. Implementation Method

(1) A full-time researcher employed at a Japanese university or research institute acts as the

project coordinator. His/her institution or department sets up the implementation framework and carries out the project.

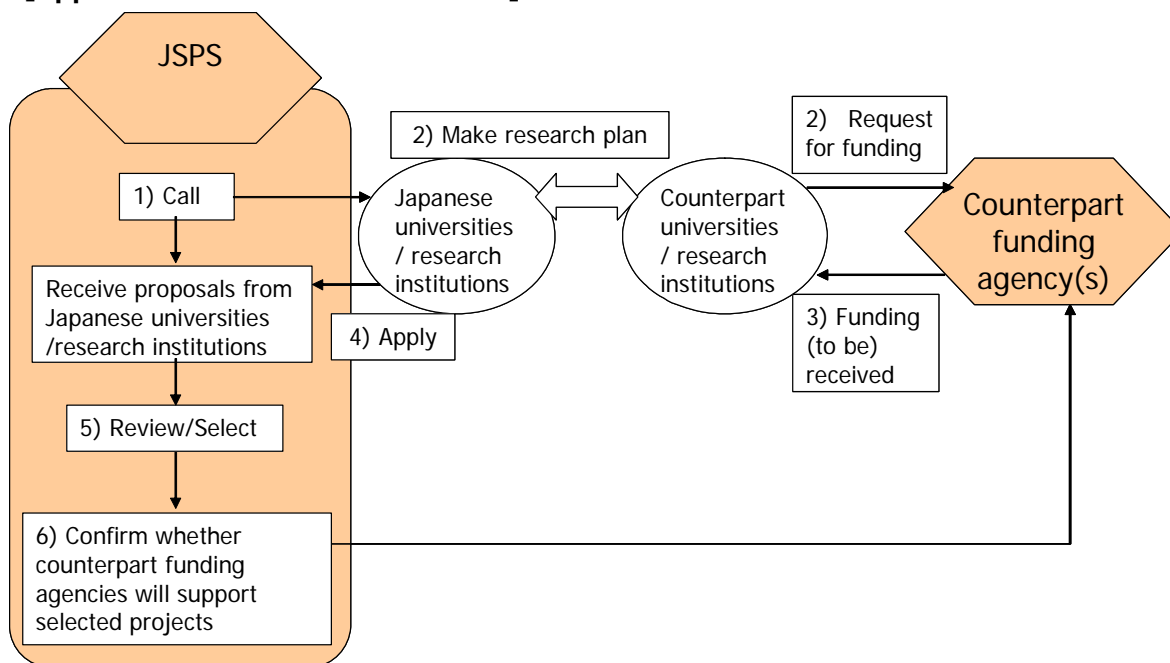
- (2) JSPS provides financial support for carrying out project-related joint research, scientific meetings and researcher exchanges by Japanese core institutions. Counterpart core institutions are to obtain project funding equivalent to JSPS's from science-promotion agencies or other funding organizations in their respective countries.
- (3) JSPS makes a call for proposals to universities/research institutions, and conducts reviews and selections. JSPS will neither seek nor negotiate with science-promotion agencies or funding organizations in counterpart countries.

The procedure is as follows.

- ① JSPS makes a call for proposals to Japanese universities/research institutions.
- ② Japanese universities/research institutions interested in conducting exchanges with counterparts in Asian countries select counterpart universities/research institutions and devise research plans.
- ③ The "counterpart core institutions" negotiate with or submit funding applications to funding agencies in their respective countries in order to obtain project funding equivalent to JSPS's. (JSPS does not ask its overseas counterpart agencies to make proposal calls under the title "Asian CORE Program." As long as counterpart core institutions are able to obtain project funding under any program in an amount as much as that provided by JSPS, JSPS consider them eligible to participate in this program.)
- ④ Japanese universities/research institutions submit applications to JSPS after the counterpart core institutions confirm that they have either acquired or been selected for project funding or been promised such funding. (However, an application may be submitted while a counterparts' funding request is being processed. If the funding is not obtained, the application will be cancelled.)
- ⑤ JSPS reviews proposals received and selects projects.
- ⑥ JSPS confirms whether funding agencies in counterpart countries are willing to provide equivalent funding for the selected projects.

※The actual operation of the selected projects is left to the core institutions themselves.

[Application and Selection Process]



5. Project Period

From April 2010 through March 2015 (under the FY2010 call)

6. Project Funding

JSPS will provide Japanese core institutions with the following funding:
Up to ¥12 million per fiscal year

7. Number of projects slated to be launched each fiscal year

Four or five projects.

8. Application Screening

Applications are screened from the following perspectives.

(1) Scientific/academic merit

- Degree to which the proposed project is recognized as being on the leading edge of research in the subject field.

- Degree to which the collaboration between the core institutions in Japan and the counterpart country can be expected to yield results of sufficiently high academic value to contribute to the development of an international education and research hub.
- Degree to which the project will build upon and expand the core institutions' past international research activities and accomplishments.

(2) Asian significance

- Whether there is a clear need and value to implementing the project with counterpart institutions in Asia.

(3) Young researchers fosterage

- Whether the project includes a program for honing the skills and expertise of young researchers.

(4) Implementation framework on Japan side

- On the Japan side, plans to build an education and research hub should be strategically placed within the core institution's overall education and research program.
- Japanese core institutions should have in place on an institutional level a system for ensuring the ongoing implementation of the proposed project. They should also have an effective scheme for mobilizing cooperation from researchers of other institutions in Japan.
- The project should be capable of enlisting the participation of researchers in Japan who are appropriately qualified to build an international education and research hub in the subject field.
- The project should be capable of continuing as an international education and research hub after funding under this program has ended.

(5) Network building with counterpart core institutions

- The match-up of Japanese and counterpart core institutions under the project should be one that holds good promise for sustained research collaboration.
- A framework for implementing the project, such as signing a cooperative agreement, should be established between the core institutions.
- As an international education and research hub, the project should be expected to contribute to the continuous development of collaboration between the core institutions in the future.

(6) Appropriateness of research plan

- Whether the plan is sufficiently concrete to achieve the project objectives and its contents are highly attainable.
- Whether the research plan is practicable in terms of both its fiscal and operational scope.

9. Points with Regard to Project Application

- (1) Research collaboration is carried out between a core institution in Japan and one or more core institutions in other Asian countries. The collaborative framework is based on equivalent funding by core institutions in each participating country.
- (2) Researchers eligible to receive JSPS financial support under this program are as follows:
- ① Researchers employed at universities and research institutes. (In case of Japan, researchers eligible to apply for MEXT Grants-in-Aid for Scientific Research.)
 - ② Researchers enrolled in the postgraduate courses, both in the master courses and in the doctoral courses.
 - ③ Postdoctoral researchers.
- (3) The Japanese-side coordinator of this project cannot be the coordinator or principal investigator of other JSPS programs concurrently, i.e., Core University Program, JSPS Core-to-Core Program, AA Science Platform Program, A3 Foresight Program, JSPS International Training Program (ITP), Japanese-German Graduate Externship, joint research or seminars under JSPS's bilateral programs, Japan-France Integrated Action Program (SAKURA), The U.S.-Japan Cooperative Cancer Research Program or China-Japan Medical Research Exchange Program.

Examples of Equivalent Burden Sharing

【Pattern 1】

Cost Items		Institution	JSPS	Counterpart Agency
Japanese-side researchers	International airfare		○	X
	Maintenance in host country		○	X
	Travel in Japan		○	X
	Research grant		○	X
Other-side researchers	International airfares		X	○
	Maintenance in Japan		X	○
	Travel in home country		X	○
	Research grant		X	○
Cost for holding seminars in Japan			○	X
Cost for holding seminars in other country			X	○
Research equipment costs at core institution			X	X

【Pattern 2】

Cost Items		Institution	JSPS	Counterpart Agency
Japanese-side researchers	International airfare		○	X
	Maintenance in host country		X	○
	Travel in Japan		○	X
	Research grant		○	X
Other-side researchers	International airfares		X	○
	Maintenance in Japan		○	X
	Travel in home country		X	○
	Research grant		X	○
Cost for holding seminars in Japan			○	X
Cost for holding seminars in other country			X	○
Research equipment costs at core institution			X	X

10. Obligations of Japanese Core Institutions

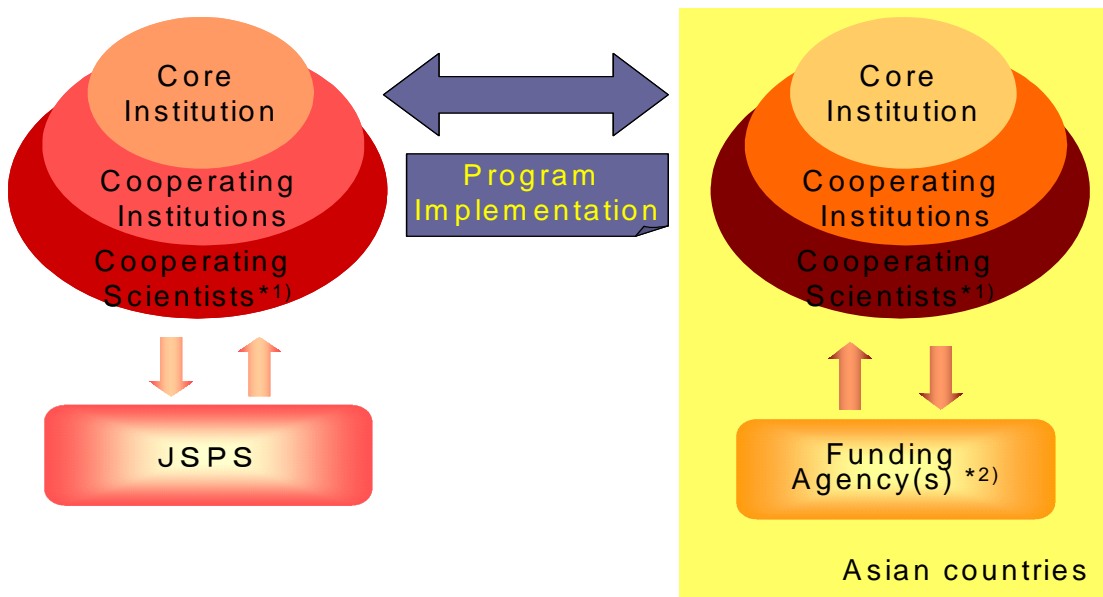
- (1) Core institutions are to establish a homepage and proactively post on it information about the project both during and after the funding period. Though JSPS does not participate in negotiations over rights to results yields through the project's implementation, the core institutions are to credit JSPS for its support when announcing such results.
- (2) JSPS's international program committee will conduct assessments of projects at their 3-year point and upon their completion. Core institutions are to provide JSPS with all the information requested to conduct these assessments. The results of the mid-term assessment will be reflected in the allocation of project funding in subsequent years.

11. Others

- (1) JSPS does not bear responsibility for any accident, sickness or other such incident that may occur over the period of the project's implementation.
- (2) Information about the project may be posted on JSPS's homepage and provided to related institutions. Such information includes the names of the core institutions, the names of the coordinators and other participants, the project's annual implementation plans and annual reports, and the results of project assessments.

- (3) If over the course of the project's implementation improper conduct (plagiarization, fabrication or falsification), misuse of funds, or abuse of authority (sexual harassment or other improper behavior) should be found to occur, the core institution may be required to return either part or all of the already-disbursed project funding to JSPS, and appropriate penalties may be imposed.
- (4) JSPS does not support research with military objectives.

<Program Diagram>



*1) Individual researcher from other countries or regions, including non-Asian, are eligible to participate in projects as "cooperating scientists".

*2) Funding may be from any organization, including corporations, in the core institution's country. Funding by the core institution, itself, is also permissible.