



WPI-Advanced Institute for Materials Research

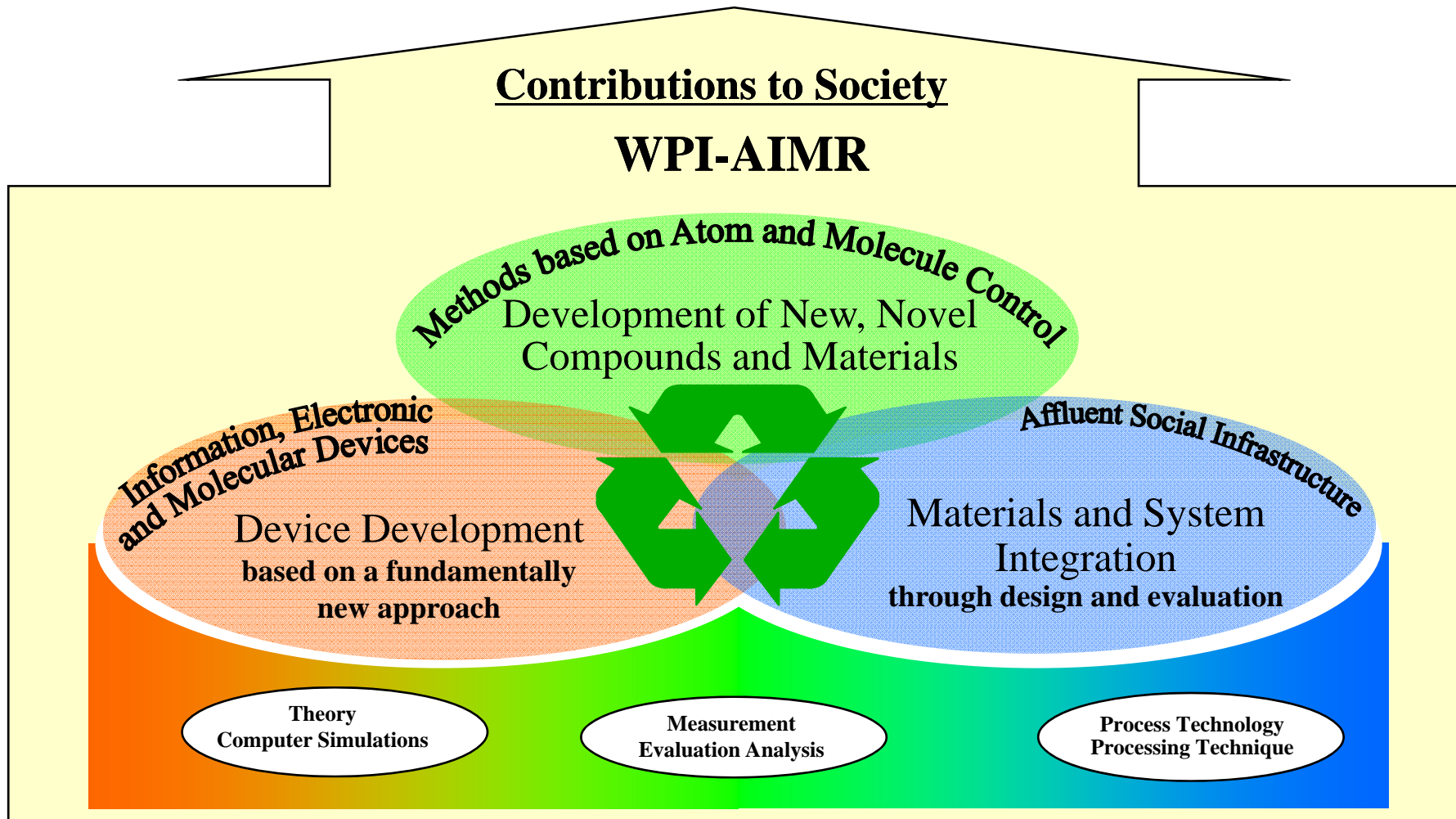
Tohoku University

Summary of Center Project

- (1) Establish the Premier Research Center for Materials;
Invent/develop New Innovative Functional Materials**
- (2) Reform the Japanese Traditional Research System and
Management System; Establish a System Suited to a World
Premier Research Center**
- (3) Strengthen International Cooperation and Construct a
“Visible Center” through Tie-up Research with Networks
and Satellites**

Research Fields and Research Objectives

Invent/develop New Innovative Functional Materials



Management of WPI-AIMR

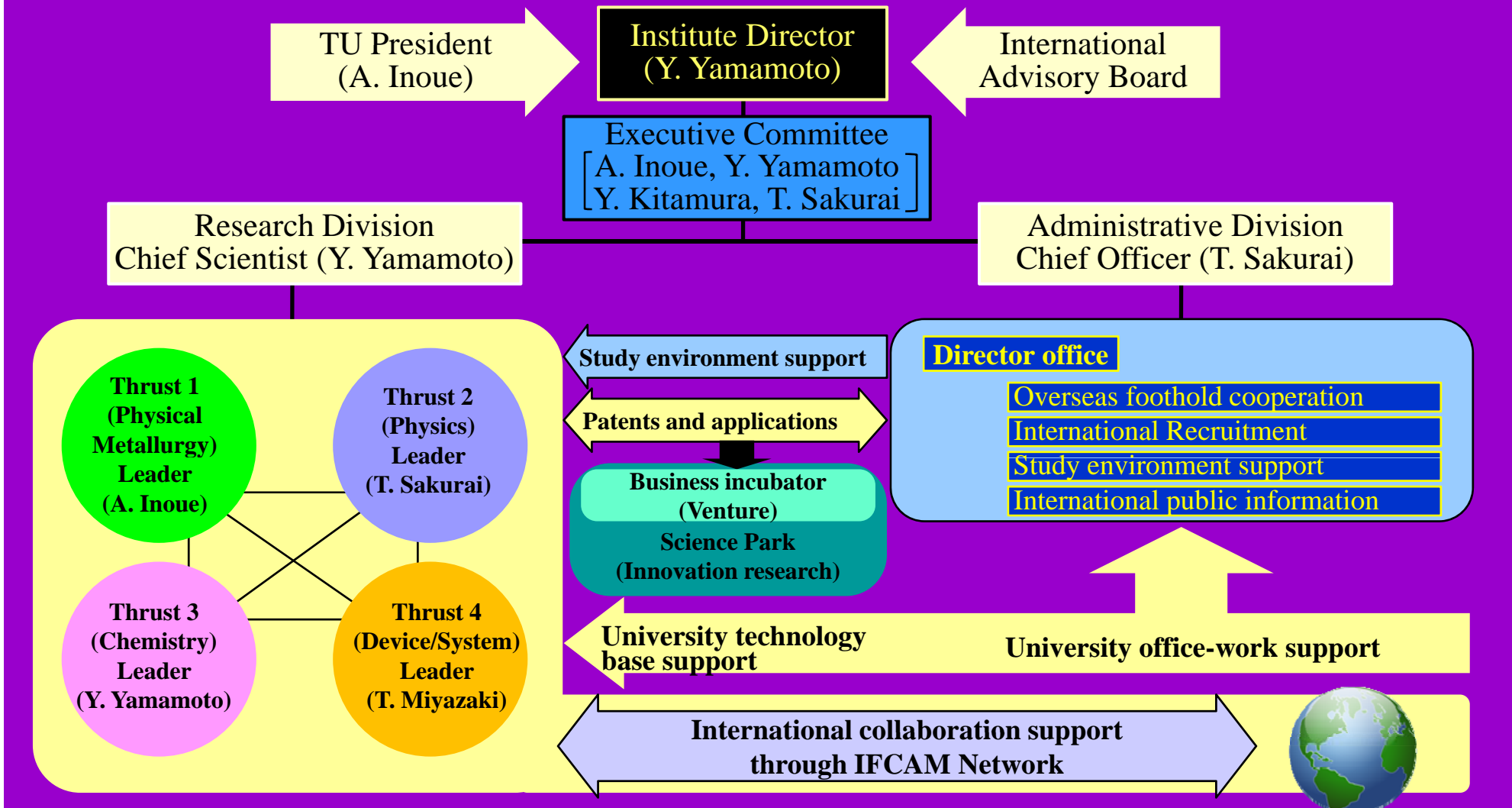
(1) Composition of Research and Administrative Staffs

	planned on October 2007	planned on March 2008	final goal (October 2008)	April 2008
Principal Investigators	30	30	30	30
from TU	15	15	15	15
from abroad	11	11	11	11
from domestic institutes	4	4	4	4
Other Researchers	30	60	90	52
Research Support Staffs	44	44	53	8
Administrative Staffs	35	35	40	22(37*)
Total	139	169	213	112(127*)

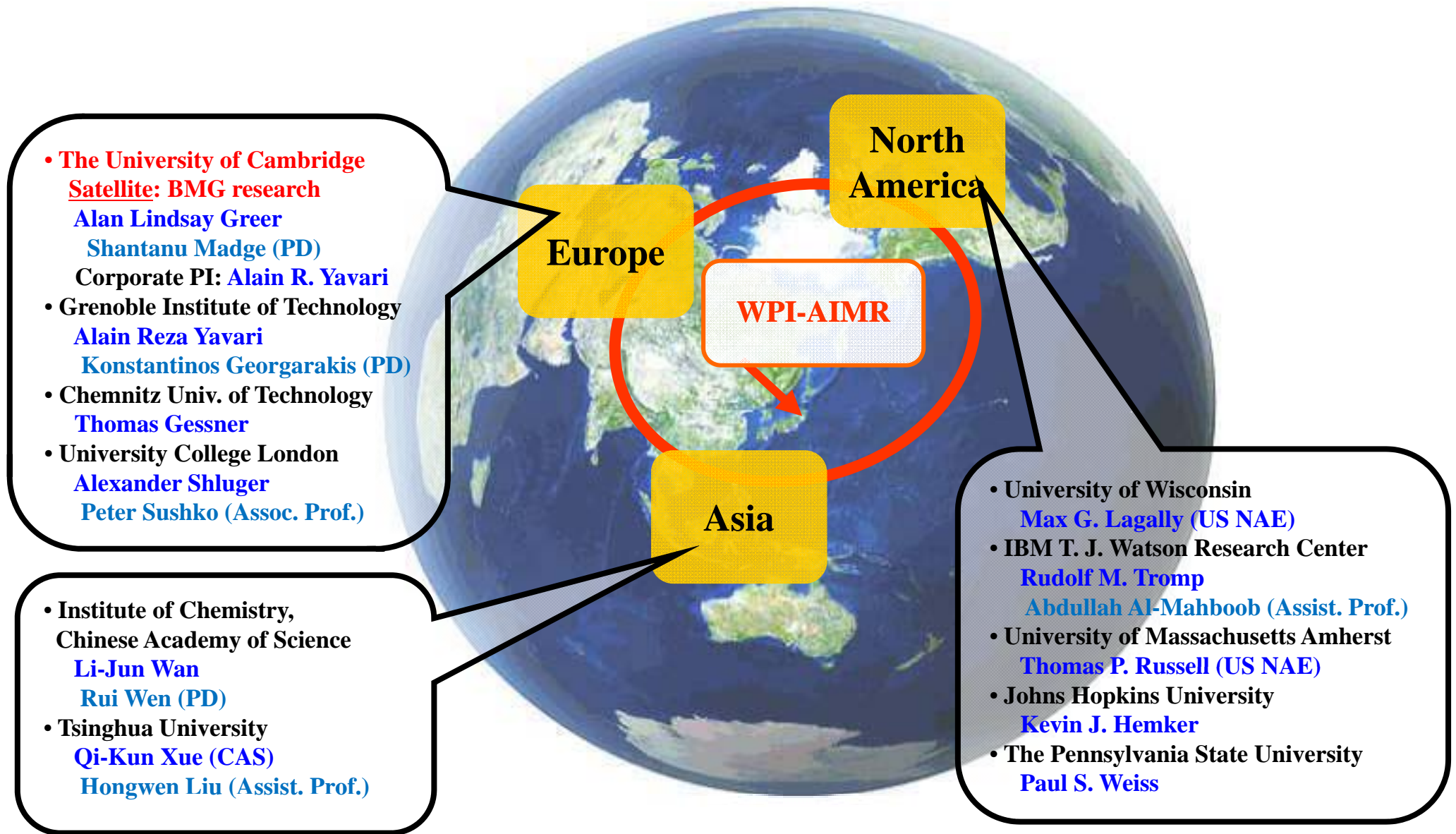
*including administrative staffs at HQ who support WPI-AIMR

(2) Decision-making System and Allocation of Authority between Center Director and Host Institution

WPI-AIMR Organization Chart



(3) Satellite and Partner Institutions (International Cooperation)



Center's Research Environment

- (1) **Status of PIs; Distinguished Professor, Other Researchers; free from ordinary duties**
- (2) **Startup Research Funding; in the FY 2007, we provided 1.1million dollars (129 million yen) [exchange rate: 1 dollar = 120 yen] for researchers.**
- (3) **Recruitment Method for Researchers; International open recruitment**
Websites; Tohoku Univ., WPI-AIMR, JST and related academic societies
Magazines; Nature, Science and other major international magazines
Journals; related academic societies
➡ We received more than 300 applicants from inside and outside Japan.
- (4) **English Skill of Administrative Staffs; We hired administrative staffs who can use English, and encouraged them to polish English skills through Berlitz.**
- (5) **Evaluation and Merit-based Compensation;**
- (6) **International Research Conferences and Symposiums;**
Inauguration of WPI-AIMR and Technical Sessions; November 15 to 16, 2007
the 1st WPI-IFCAM Workshop; February 18 to 19, 2008
- (7) **Laboratory Space**

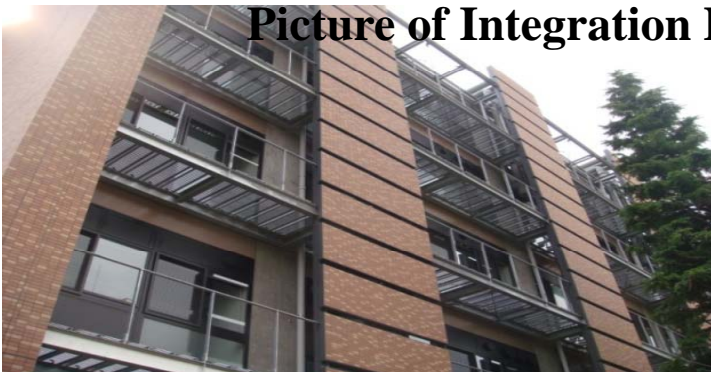
Laboratory Space; Present and Future

Arrangement of research space

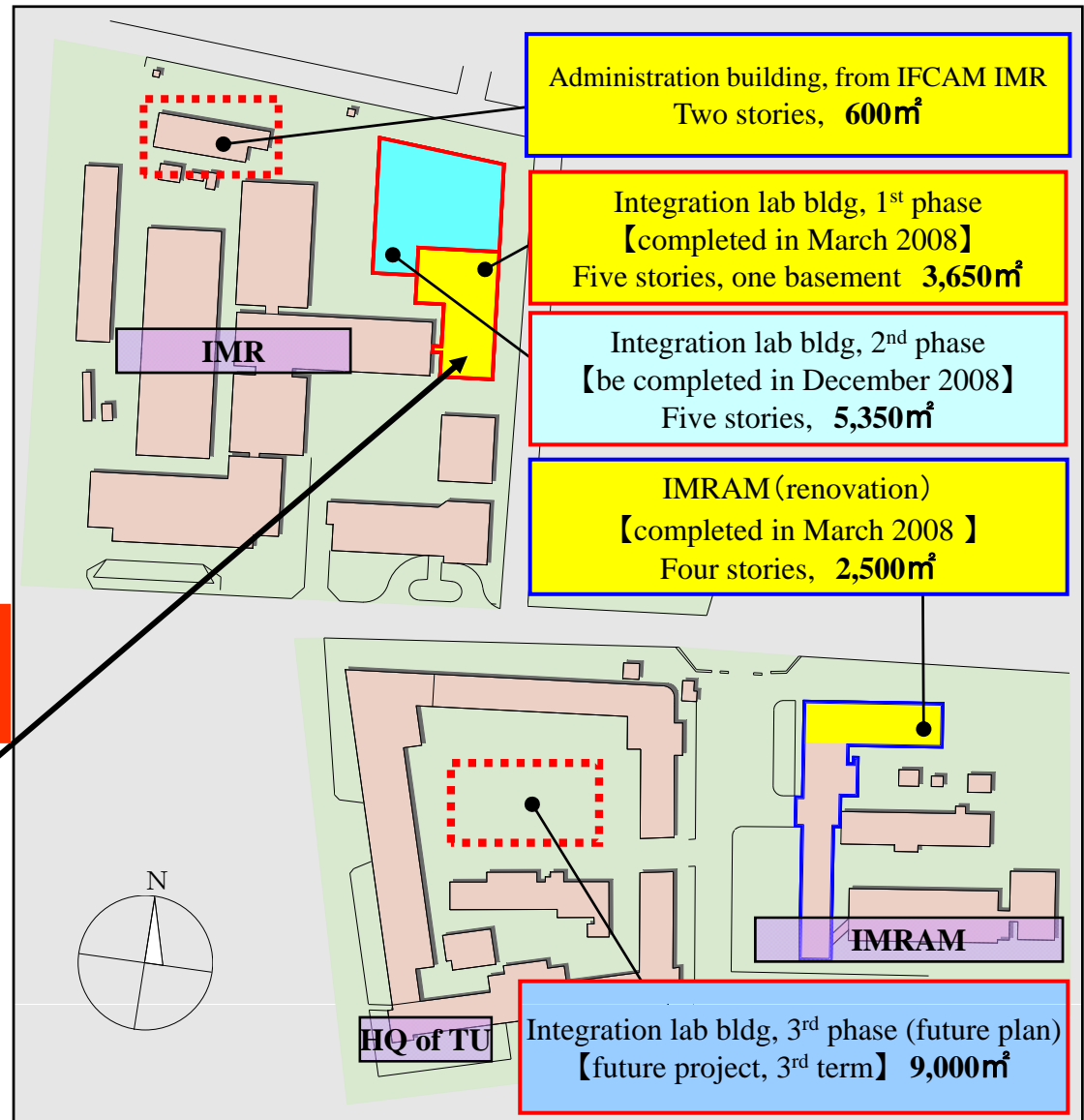
- ◇ Currently available space for WPI
4, 500m²
- ◇ Administration Headquarter (IFCAM, IMR)
600m²
- ◇ From IMRAM (renovation)
2, 500m²
- ◇ Integration lab bldg, 1st & 2nd phase (newly built)
9, 000m² (FY2007:3,650m² FY2008:5,350m²)
- ◇ Integration lab, 3rd phase (future plan)
9, 000m²

25, 600m²

Picture of Integration Lab



Arrangement Plan of Research Labs 【Katahira Campus】



Criteria and Methods Used to Evaluate Center's Global Visibility

(1) Research Accomplishments

the ordinary criteria; publications, citation, international awards, ranking by ISI
visible contribution to society by providing useful materials

(2) How Can We Attract Top-Researchers on Material Science from All Over the World?

Percentage of foreign researchers among researchers; the minimum requirement at the application stage, **30%**

Prof. A. Inoue has been elected as **a member of National Academy of Engineering (NAE)**

Prof. T. P. Russell has been elected as **a member of NAE**

Prof. T. Miyazaki was awarded **Asahi Prize**

39% in April 2008

(PI: 40%, Other Researchers: 38%)