

## ***Review Guidelines***

The Global COE Program will provide funding support for establishing education and research centers that perform at the apex of global excellence to elevate the international competitiveness of the Japanese universities. The program will strengthen and enhance the education and research functions of graduate schools, to foster highly creative young researchers who will go on to become world leaders in their respective fields through experiencing and practicing research of global excellence.

### ***I. Review Policy***

The concept of "Global COE Program" embodies the following four requirements.

1. The proposal should embody a future concept for developing the university reflecting its unique institutional character and be given powerful instruments for creating an internationally excellent education and research center under the university president management.
2. After the five years of funding ends, the university's COE should be able to continue operation as an internationally excellent education and research center.
3. The purpose of the program is not to compile research projects. The program should build an education and research center that functions to foster highly creative young researchers. To do this, the center must conduct highly creative and vanguard research at the highest world level. It should also have the potential for future expansion.
4. Programs particularly in the area of "Interdisciplinary, combined fields, new disciplines" should incorporate strategies to innovate existing research sections or departments, such as through organization and/or curriculum reform.

In addition to the above conditions:

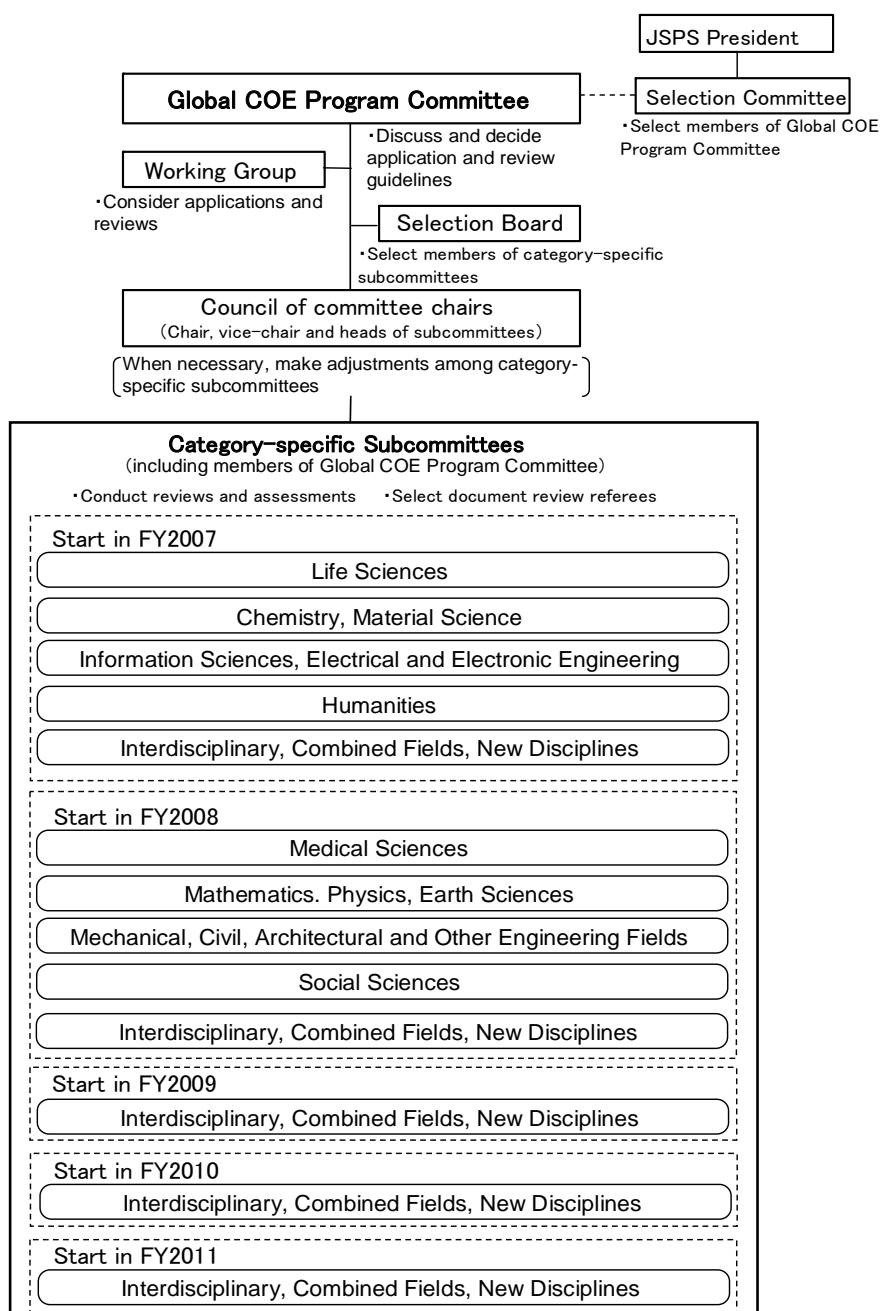
5. In the case of COEs established under the "21st Century COE Program," they should have already achieved their expected results under that program.
6. If a core university wishes to implement its COE program in cooperation with other institutes (including domestic/foreign institutes), it must formulate a clear concept of its own future development and of the proposed education/research center and show why cooperation with other institutes is necessary to realizing the concept.

## II. Review Method

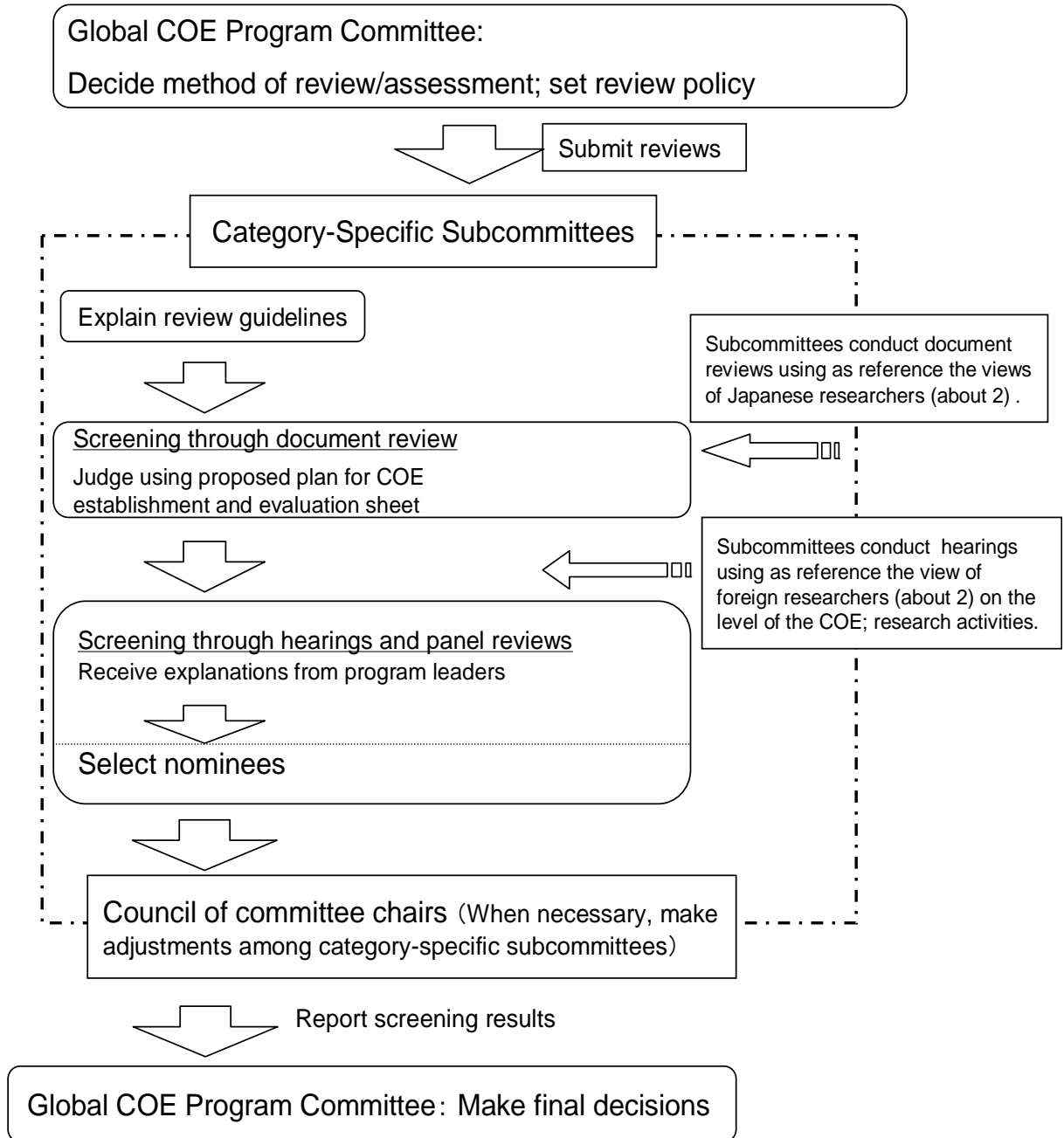
### 1. Review Method

Candidates for grants are selected from among the applicants by the Category-specific Subcommittee of each program field. They are referred to a Council of Committee Chairs, which makes overall adjustments when needed and reports the results to the Global COE Program Committee, which makes the final decisions.

### 2. Organization of Global COE Program Committee



### 3. Review procedure of category-specific subcommittees



#### **4. Points to be considered in selection process**

Proposals are to be reviewed from the following viewpoints.

##### (1) From the viewpoint of the university's strategy

- That the proposal for establishing the COE is strategically placed within the overall framework for realizing the university's future concept.
- That a concentrated effort is planned for building an internationally excellent education and research COE under the university president's management.
- That after program funding has ended, the COE will continue to function independently as an internationally excellent education and research center.

##### (2) From the viewpoint of establishing a COE

- That the proposal is designed to build an internationally excellent education and research center, and have incorporated within it the potential for future expansion.
- That the proposal is highly feasible both in terms of step-by-step implementation and in its ability to enhance doctoral-level education and research at the university.
- If the proposal calls for cooperation with other institutions in implementing the program, that the core university is clearly identified and the concept for developing its COE clearly defined, and that the need for institutional cooperation in realizing the concept is clearly described.
- That an effective system for managing the program's operation has been devised.

##### 1) From the viewpoint of fostering human resources

- That an effective program of education is put in place to foster young researchers who will play important roles.
- That the proposal enables young researchers to fully develop and use their abilities by giving financial support for PhD students, providing opportunities for young researchers to actively perform independent work, and other such means.
- That the program is designed to foster internationally active researchers by such means as attracting excellent students from both in and outside Japan, promoting student mobility, inviting excellent researchers from both in and outside Japan; dispatching young researchers, including exchange students, overseas and hosting those from abroad; and establishing or participating in cooperative education/training programs with overseas institutions.

- That the university has a good record of fostering and supporting young researchers including PhD students. (In the case of COEs established under the 21<sup>st</sup> Century COE Program, that the excellent results expected in this regard were achieved.)
- If the proposal calls for cooperation with other institutions in implementing the program, that how they will cooperate in carry out a system of effective researcher development is clearly described.

## 2) From the viewpoint of research activities

- That the content of the proposal for establishing the COE is aimed at achieving the world's highest research standard. Those international research activities are carried out through such means as building international networks, employing and inviting excellent researchers, dispatching and hosting young researchers, and cooperating with overseas research institutions. Or that the proposed COE will conduct research activities intrinsic to Japan or employ research approaches not found in other countries, and that it will proactively disseminate such research results to other countries.
- That a system is provided for the participating researchers to substantively liaise and cooperate with each other and contribute fully to establishing the COE.
- That the university has a good record of research achievements conducive to establishing an internationally excellent education/research COE. (In the case of COEs established under the 21<sup>st</sup> Century COE Program, that the excellent results expected in this regard were achieved.)
- If the proposal calls for cooperation with other institutions in implementing the program, that how they will cooperate in carry out the research collaboration effectively is clearly described.

## 3) From the viewpoint of budget

- That the proposed amount of funding is rational; that is, both appropriate and necessary for implementing the program.

## **5. Others**

### **(1) Application and fields supported**

- 1) The research fields to be supported are divided into 9 fields, with grants issued in five of the fields in each of the fiscal years. (For details, see the chart below.)
- 2) About 10 COE proposals will be selected based on the Application Guidelines.
- 3) The funding scale for each selected program will be from about 50 million up to 300 million yen per fiscal year. However, applications for funding of less than 50 million yen are also accepted. In principle, the funding period is 5 years. One criterion for selecting and evaluating COE programs is the appropriateness of their requested funding.

• Composition of fields

FY	Categories	Fields (examples)
2007	Life sciences	Biological sciences, agricultural sciences, pharmaceutical sciences, etc. Others (multidisciplinary fields centering on life sciences)
	Chemistry, material sciences	Chemistry, material sciences, metallurgical engineering, process engineering, etc. Others (multidisciplinary fields centering on information sciences or electrical and electronic sciences).
	Information sciences, electrical and electronic sciences	Information sciences, systems, software, materials, devices, telecommunication engineering, etc. Others (multidisciplinary fields centering on information sciences or electronic sciences).
	Humanities	Philosophy, linguistic, literature, history, human geography, cultural anthropology, psychology, education, art, etc. Others (multidisciplinary fields centering on humanities).
2008	Medical sciences	Medicine, dentistry, nursing, healthcare, etc. Others (multidisciplinary fields centering on medical sciences).
	Mathematics, physics, earth sciences	Mathematics, basic physics, applied physics, astronomy, earth/planet sciences, etc. Others (multidisciplinary fields centering on mathematics, physics, earth sciences).
	Mechanical, civil engineering, architectural and other fields of engineering	Mechanical engineering, civil engineering, architecture, etc. Others (multidisciplinary fields centering on mechanical, civil engineering, architectural and other fields of engineering).
	Social sciences	Law, political science, economics, management, sociology, etc. Others (multidisciplinary fields centering on social sciences).
2007-2011	Interdisciplinary, combined fields, new disciplines	Medical engineering, human sciences, environmental sciences, energy sciences, area studies, etc. New disciplines including combined and interdisciplinary fields that overarch the above-listed fields (for example, Life sciences and Humanities) (Combined programs in which one field is dominant are excluded.)

*Note:* The above-listed examples of fields are to give an image of the scope of each field. They are not meant to limit the option of fields or to prevent the combining of fields.

(2) Disclosure and release

- 1) Information and materials related to meetings of “Global COE Program Committee” are released in principle. However, selection-related discussions and investigations and other matters not suit for disclosure are kept closed.
- 2) A summary of the meetings is also released in principle.
- 3) Selected programs are reported to MEXT and released via JSPS’s website.
- 4) Names of committee members are released, and names of subcommittee members are to be released after final decision.

(3) Exclusion of conflicts of interest

- 1) In case a committee member belongs to the faculty of an applying university or has belonged to one within the past three years.
- 2) In case a committee member holds an administrative position in an applying university.
- 3) In other cases that would make it difficult to maintain the fairness of the review (e.g. kinship, intimate relationship).

(4) Maintenance of confidentiality

- 1) Committee members may not leak what they know about individual information and the review contents.
- 2) Committee members must take care to safeguard the confidentiality of information in their charge.

(5) Assessment

- 1) An interim assessment is conducted at the 2-year point of selected programs and at the end of the programs.
- 2) Information on these assessments is provided to the subject universities’ presidents.